

foun·da·tion

/foun 'dāSHən/

an institution established with an endowment, for example a college or a body devoted to financing research or charity.

What even IS a Foundation?

And what do you do with it?

Foundation Information: Audit and Annual Report

Lindsey Bogner

Executive Director of Institutional Advancement

Let's open the book

Founded May 4, 1967 as the Barton County Junior College
Endowment Association

Governed by Board of Directors from our local communities

Managed and operated by four staff:

Lindsey Bogner – Executive Director of Institutional Advancement

Donna McCormick – Foundation Business and Accounting Specialist

Amy Wheeler – Administrative Assistant

Lora Zink – Administrative Assistant, part-time

2022 fiscal year end assets: \$10.2 million

\$8,671,787 Donor Restricted \$1,551,810 Unrestricted

- 134 endowed or quasi-endowed funds
- 42 funds of other types
- \$768,939 in fine art pieces
- \$128,355 in historical books and collections





We support Barton and Barton students.

We do that by raising funds and friends to provide scholarships to students and grants to the College.

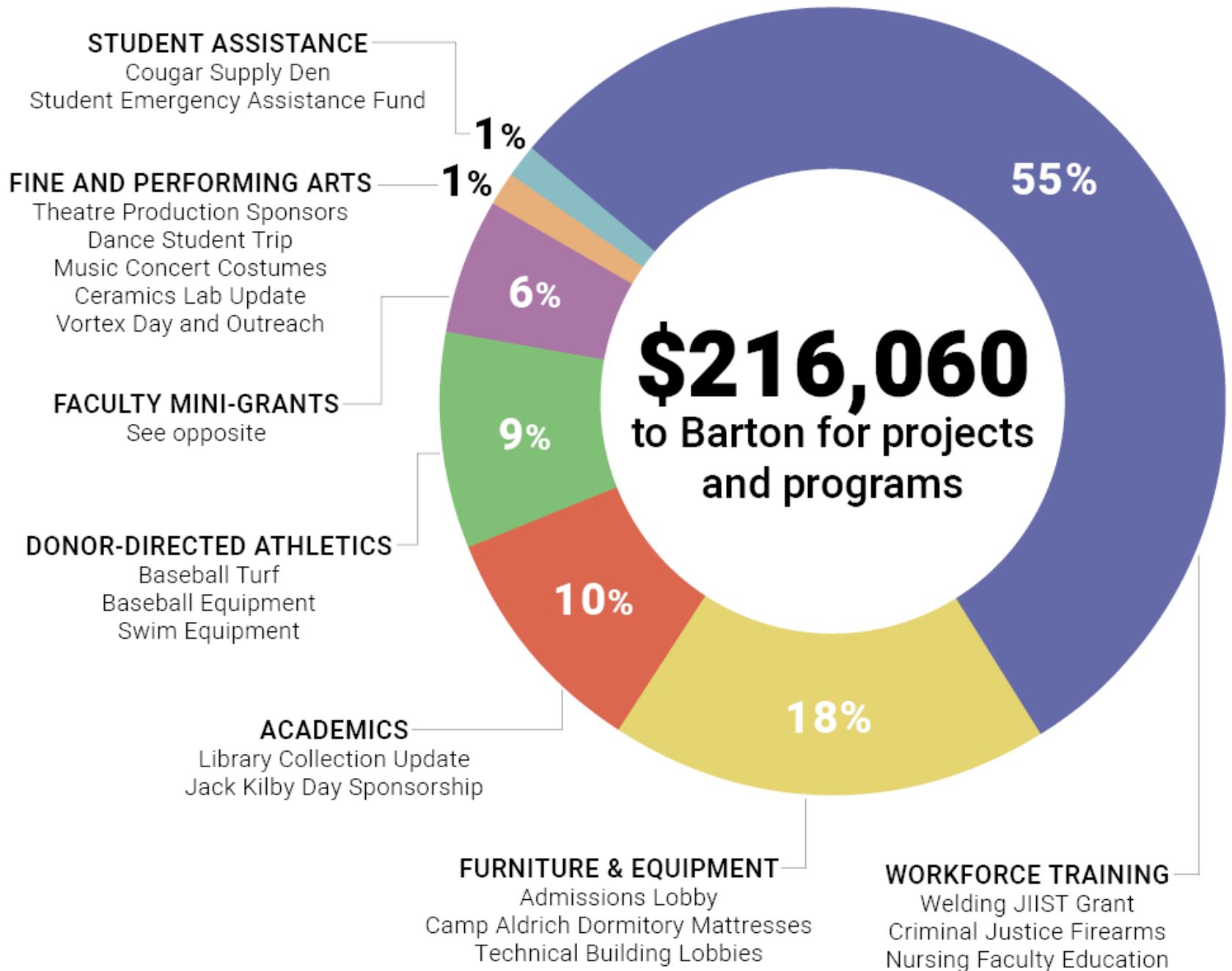
“The Barton Community College Foundation exists to raise private sector funds by providing leadership and to prudently manage gifts to benefit educational opportunities and initiatives of the College.”



We take our mission seriously - and we fulfill it with the generosity of donors from inside and outside our campuses.

\$362,156 in scholarship funds to Barton students

\$216,060 in program and facility enhancements



Faculty Mini Grants

Mini-Grants are awarded across all Barton campuses to support the work done in the classroom. Funds for the program come from the proceeds of the Annual Sporting Clay Shoot.

All faculty are eligible to apply.

\$1,800: Business Student Field Trips

Kathy Boeger, Business

\$472: Laboratory and Glaze Area Updates

Bill Forst, Ceramics

\$131: Wigs for Mannequins

Brittany Fanshier, Nursing

\$819: Hematology Analyzer Supplies

Karen Gunther, Medical Lab Technician

\$635: Lighting Kits

Philip Jacobson, Fine Arts

\$571: Chemistry Model Kits

Erika Jenkins-Moss, Science

\$1,800: Saw-Stop Table Saw

Matt Mazouch, Carpentry

\$147: Glo-Germ Handwashing Kit

Diane McReynolds, Nursing

\$1,414: Plumbing Tools

Jeff Meyer, Plumbing

\$729: 3D Printer

Wade Morris, Welding

\$713: Performance Music Folders

Luis Palacios, Music

\$830: Animal Anatomy Models

Maggie Tracy, Agriculture

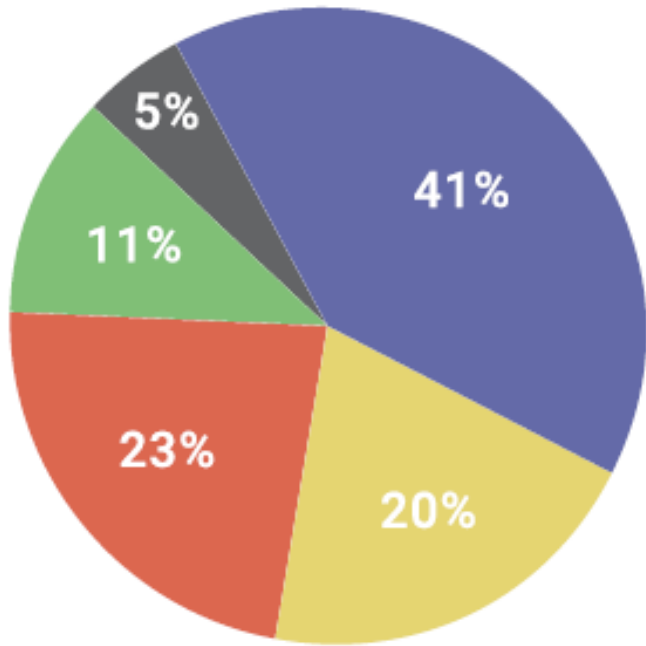
\$702: OSHA Electrical Books

Lawrence Weber, OHSA

\$1,545: Student Conference Fees

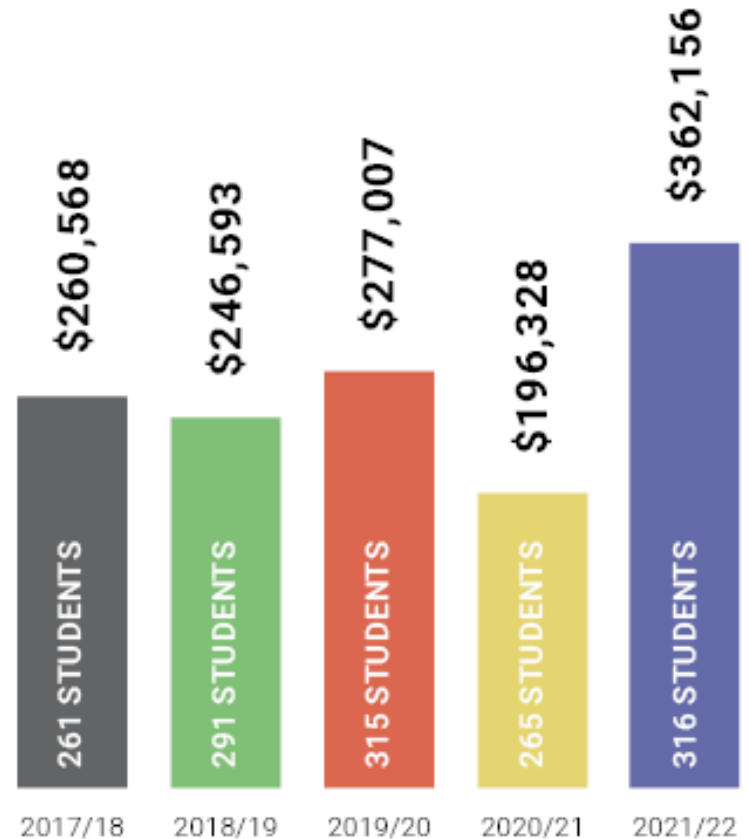
Ronnie Wertz, Early Childhood Development

316 scholarships for \$362,156 in awards



Where are our awardees from?

- BARTON COUNTY**
- SERVICE AREA**
Ellsworth, Pawnee, Rice, Russell, Rush, and Stafford Counties
- STATE OF KANSAS**
- OUT OF STATE**
- INTERNATIONAL**



FIVE YEAR AWARD HISTORY

Scholarship Criteria

Each scholarship has award criteria detailing the donor's wishes in who receives that scholarship. Of the 157 scholarship funds, 153 have some sort of criteria restriction. Many scholarships have multiple criteria (for example: student must be female, majoring in business, and have a 3.0 GPA) and some list these criteria as merely "preferences". Here is a breakdown of criteria across our funds:

- **Enrollment status:** 74 full-time only; 18 full- or part-time; 2 part-time only
- **Type of student:** 14 traditional-only; 15 non-traditional only; 4 incarcerated students only
- **GPA:** 1-1.75; 9-2.0; 23-2.5; 40-3.0; 1-3.2; 1-3.25; 1-3.3
- **Major:** 12 agriculture; 22 business/marketing/accounting; 23 healthcare/nursing/medical lab tech; 9 arts/music; 2 criminal justice; 4 science; 26 vo-tech/welding
- **Residency:** 16 Barton County-only; 18 BCC service area; 19 Kansas; 12 with various residency requirements
- **Graduating High School:** 2 Barton County; 2 BCC Service Area; 5 Ellinwood; 4 Great Bend; 3 Hoisington; 3 various other counties or towns; 8 Kansas
- **Athlete:** 8 on Barton athletic team; 4 only for non-athletes
- **Financial Need:** 55 must demonstrate financial need
- **Ethnicity:** 4 ethnic minority student; 1 Hispanic
- **Other:** 6 American citizen; 4 female; 2 single parent; 30 with various other requirements/preferences





We take our mission seriously - and we fulfill it with the generosity of donors from inside and outside our campuses.

\$274,860 in scholarship funds to Barton students

\$157,950 in program and facility enhancements

FY23 to date



**You know what it is now.
And what do you do with it?**

How we accomplish the mission

Fundraising events

- Annual Sporting Clay Shoot (13th in 2023)
- Annual Big Benefit Auction (43rd in 2023)

Fundraising campaigns

- Employee Giving Campaign (previously BEST)
- Annual Report & End-of-Year giving
- “Grow With Us” Ag Complex capital campaign

Proposals and Donor Solicitations

- Grants
- Endowment and annual fund creation

Brand Ambassadors

- Leadership and speaking engagements

Stewardship and Accountability

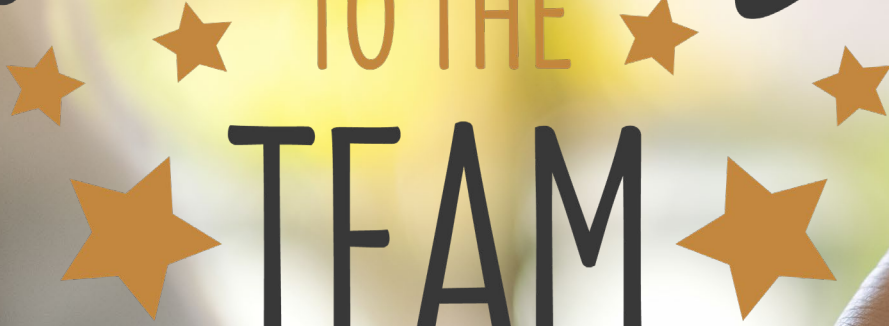
- Communications and recognition
- Fund accounting and audits



welcome

TO THE

TEAM



How you create change

Fundraising events

- Attend
- Invite others
- Share information and refer donors to us

Fundraising campaigns

- Give
- Share information and refer donors to us

Proposals and Donor Solicitations

- Share information and refer donors to us
- Open the door

Brand Ambassadors

- Share your story

Stewardship and Accountability

- Share the good news



You have more impact on the work of the Foundation than any other factor.

What story are you sharing?

