

# Monitoring Report – END #4 -PERSONAL ENRICHMENT

Recipients pursuing individual interests will be personally enriched.

- Individuals/students will experience various cultural activities.
- Individuals/students will participate in College activities.
- Intercollegiate athletics and other extra curricular programs and activities will improve the lives of the participant(s).

## Shafer Gallery

The Shafer Gallery is referred to as the “Gem of the Campus” preserves the dream of a strong commitment to culture and arts. Below are various charts showing positive trends in Gallery attendance from the local area and the Midwest, as well as those from across the country and abroad. [Art Gallery](#)

The Shafer Gallery continues to provide quality aesthetic experiences designed to enhance and enrich the lives of our students, area school children and members of the greater community. This year we presented a variety of exhibits including;

- **Native Witness:** Indians in the Shafer featuring the Button Blanket Collection with a concert at the Crest Theater by Native musician/educator John Two-Hawks
- **Native Witness Film Festival** featuring the work of young Native American filmmakers.
- **Vortex Day:** High School Art Day with workshops and student centered gallery critiques.
- Two High School League Art exhibits.
- **Exposure Time:** Spring Juried Photography Exhibit featuring master photographer Stan Reimer
- **History Write Large:** Calligraphy exhibit and workshops featuring IAMPETH and the unveiling of the Potucek murals from the Bank of the West.
- **National Quilt Museum New Quilts from an Old Favorite 2012** featuring the Golden Belt Wood Carvers
- **Annual Festival of Trees** featuring the Schmidt Memorial Village, model trains from the Golden Belt Model Train Association and selections from the National Cookie Cutter Museum

## Silver Cougar Club

The Silver Cougar Club is an organization for individuals 55 years of age or older or a spouse of a Silver Cougar Club member who is 55 years of age or older. The club offers a variety of events and services, while promoting friendships among its members. Membership is diversified and includes men and women, singles and couples, individuals 55-96 years of age, and members from a variety of communities.

[Silver Cougar Club](#) – The top 4 attended Cultural Events for 2013 are:

1. Dinner at Farm in Yoder
2. Dearly Beloved – Dinner and Theater in Salina
3. All Hands on Deck Dinner and Fox Theater in Hutchinson
4. Silver Cougar Club Picnic

## Student Activities

The College activity program supplements the instructional program by providing experiences that will add to your enjoyment of life and stimulate personal growth and social development.

[Student Activities](#) – The top 4 events students participate in are:

1. Movie Night
2. Bingo Night
3. Halloween Dance
4. Casino Night

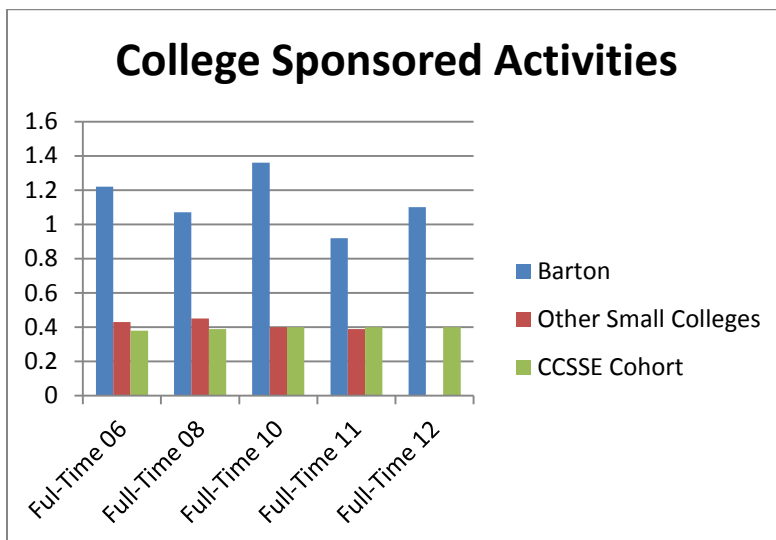
## Graduation Exit Survey

Grad Survey Question 17 asks students to rate the student activities at Barton of those who used the services 80.6% percent said that the services were rewarding or good (Spring 2013 & Fall 2013).

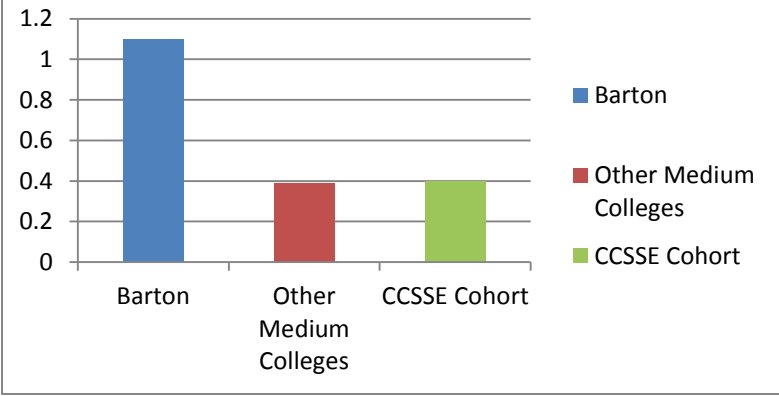
Graduation Exit Survey required of all students who wish to graduate. This survey has been collecting data since 2007. Grad Survey Question 17 – [Spring 2013](#) & [Fall 2013](#)

## Community College Survey of Student Engagement

[CCSSE](#) - Question 10c rates Barton as statistically higher than other colleges. This question addresses participation in college-sponsored activities (organizations, campus publications, student government, intercollegiate or intramural sports, etc.)



# College Sponsored Activities 2012



\*Barton is significantly statistically higher on the full-time students in 06, 08, 10, 11 & 12.

(In 2012 Barton was included in the Medium College comparison based on FTE)