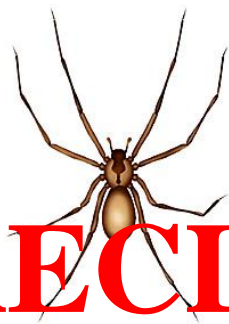
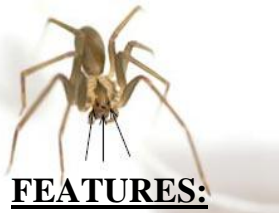


WARNING:



BROWN RECLUSE SPIDERS



FEATURES:

- Violin pattern on back at point where legs attach to body
- Base of violin, at head of spider
- Neck of violin, points to rear
- Yellowish-tan to dark brown in color
- Darker legs approx. 1 inch in length
- 6 eyes
(but who is going to get close enough to count?)



HABITS:

- Non-aggressive
- Bite only if threatened (usually when pressed up against victim's skin)
- Likes dark, warm, dry environments
- Haphazard web mostly in corners and crevices (Use to protect and eggs, not for food collection)

BITE:

Toxic to cells and tissues
Often unnoticed----generally painless

Initial bite---

- Mildly red
- May reveal fang marks
- Generally becomes firm and heals within few days to weeks



Symptoms develop 2-8 hrs after bite

Severe pain 4 hrs after bite

- Severe itching
- Nausea
- Vomiting
- Fever
- Muscle pain

Bite may become severe

- Significant red, swollen blistering skin
- Blue discoloration
- Leads to necrotic tissue/scarring



FIRST AID:

- Apply ice to decrease pain and swelling
- Elevate area above heart if possible
- Wash area with cool water and mild soap
- Avoid strenuous activity may spread venom
- Use Tylenol for pain
- **DO NOT** use hydrocortisone ointment



PREVENTION:

- Routine thorough housekeeping
- Reduce clutter
- **DO NOT leave clothing on floor in piles**
- **Remove everything from under beds**
- **Shake out clothing prior to putting on**
- **Shake out shoes especially first thing in morning**
- Take care when carrying or emptying boxes

