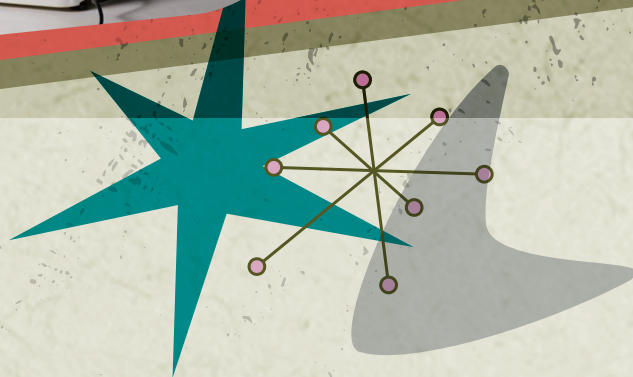


# BARTON

COMMUNITY COLLEGE







## AGRICULTURE & INDUSTRIAL TECHNOLOGY

### Agriculture

- » Crop Protection, Beef Cattle Production and Agri-Business programs.
- » Hands-on education in the field!
- » Features a soil pit.
- » GPS and crop protection equipment.
- » Guest speakers and field trips!
- » Collegiate Farm Bureau participation and internship opportunities available.

BARTON  
COUNTY  
CAMPUS

Contact Dr. Victor Martin at (620) 792-9207 or [martinv@bartonccc.edu](mailto:martinv@bartonccc.edu).

Learn more at [ag.bartonccc.edu](http://ag.bartonccc.edu).



### Scale Technician

- » New certificate option for students to learn to repair, install and certify commercial weighing and measuring devices (scales).
- » Certificate may be completed in one semester.
- » Barton offers the only certificate program in Kansas preparing students for employment in the weights and measures industry.
- » Hands-on education and real world experiences; industry commitment to hiring successful students.
- » Wide variety of career opportunities and work environments.
- » High demand career field with excellent wages and benefits in Kansas and nationwide.

BARTON  
COUNTY  
CAMPUS

Contact Dr. Victor Martin at: 620-792-9207 or [martinv@bartonccc.edu](mailto:martinv@bartonccc.edu).

Learn more at [scales.bartonccc.edu](http://scales.bartonccc.edu).



### Automotive Technology

- » Custom high-school program available.
- » National Automotive Technicians Education Foundation (NATEF) recognized.
- » Automotive Service Excellence (ASE) certification available.
- » Learn the latest tech & use cutting-edge equipment.

BARTON  
COUNTY  
CAMPUS

Contact Ron Kirmer at (620) 792-9336 or [kirmerr@bartonccc.edu](mailto:kirmerr@bartonccc.edu).  
Learn more at [auto.bartonccc.edu](http://auto.bartonccc.edu).

### Natural Gas Transmission & Distribution

- » Certificate option will get you to work in one semester! Full degree takes only one year!
- » Learn directly from experts in the industry!
- » Hands-on learning with cutting edge equipment.
- » Internships available with industry partners.
- » Many students secure jobs before graduating.

BARTON  
COUNTY  
CAMPUS

Contact Vince Orth at (620) 792-9381 or [orthv@bartonccc.edu](mailto:orthv@bartonccc.edu).  
Learn more at [naturalgas.bartonccc.edu](http://naturalgas.bartonccc.edu).



### Natural Gas Measurement

- » Finish in one semester!
- » Learn directly from experts in the industry!
- » Learn first-hand to configure, maintain and troubleshoot flow measurement systems.

BARTON  
COUNTY  
CAMPUS

Contact Vince Orth at (620) 792-9381 or [orthv@bartonccc.edu](mailto:orthv@bartonccc.edu)

Learn more at [naturalgas.bartonccc.edu](http://naturalgas.bartonccc.edu).



GET AHEAD!

SAVE MONEY!

GET AHEAD!

SAVE MONEY!

# ATTENTION

High school students:

Pay **NO TUITION**

on dozens of career technical classes

PROGRAM  
FEES AND  
TEXTBOOK  
COSTS MAY  
APPLY

Online and on-campus offerings available!

Qualifying coursework includes courses in exciting fields like accounting, agriculture, automotive, criminal justice, early childhood education, emergency medical services, medical terminology and medical assisting, networking, phlebotomy, programming, and welding.

For more information and to view the eligible list of classes, visit [senatebill.bartonccc.edu](http://senatebill.bartonccc.edu) or contact Karly Little, Coordinator of Community Education at [littlek@bartonccc.edu](mailto:littlek@bartonccc.edu) or (620) 792-9294.

#### Excel in CTE Initiative (SB155)

The Kansas Senate passed Senate Bill 155 in May 2012. This bill authorizes the state of Kansas to pay tuition charges for any tiered Career Technical Courses. Therefore, courses designated as Senate Bill 155-eligible will be available to high school students at no cost except textbook and program fees (if applicable). This applies to face-to-face and online Career Technical Courses.

GET AHEAD!

SAVE MONEY!

GET AHEAD!

SAVE MONEY!





# Worried about college debt?

Come to Barton and let your **GPA PAY** the way!

Your ACT score or GPA could score you books and tuition! Visit [GoBarton.com/GPA](http://GoBarton.com/GPA) for more information.

	AWARD AMOUNT	KANSAS HS GPA	OR	ACT SCORE
	Tuition & Books	3.6 and above	or	26+
	\$1,000	3.0 - 3.59	or	24 - 25
ward	\$800	2.5 - 2.99	or	22 - 23



## Welding

- » Certificate program with American Welding Society S.E.N.S.E. level 1 credential.
- » 1F - Flat Fillet Weld  
2F - Horizontal Fillet Weld  
1G - Flat Groove Weld
- » Individualized training in small class sizes.
- » Master the three most common methods of metal joining:
  - Shielded metal arc welding (stick).
  - Gas tungsten welding (TIG).
  - Gas metal arc welding (MIG).
- » Learn mechanical, oxy-fuel, plasma arc and carbon cutting processes.
- » Finish in one semester!

Contact Wade Morris at (620) 792-9325 or [morrisw@bartonccc.edu](mailto:morrisw@bartonccc.edu).  
Learn more at [welding.bartonccc.edu](http://welding.bartonccc.edu).

BARTON  
COUNTY  
CAMPUS



## Commercial Drivers License (CDL)

- » Flexible scheduling!
- » Earn a Class A license with an airbrake endorsement.
- » On-site skills (driving) test.

Contact Maggie Tracy at (620) 786-1120 or [tracym@bartonccc.edu](mailto:tracym@bartonccc.edu).  
Learn more at [cdl.bartonccc.edu](http://cdl.bartonccc.edu).

BARTON  
COUNTY  
CAMPUS



## BUSINESS TECHNOLOGY

### Business - Career & Transfer

- » Finish in two years or transfer seamlessly to a Kansas university!
- » Learn accounting processes and basic business foundations.
- » Community business tours.
- » Network with successful entrepreneurs!
- » Annual Business Etiquette Dinner.

Contact Kathy Boeger at (620) 792-9203 or [boegerk@bartonccc.edu](mailto:boegerk@bartonccc.edu).  
Learn more at [business.bartonccc.edu](http://business.bartonccc.edu).

BARTON  
COUNTY  
CAMPUS  
and online

### Business Administrative Technology

- » Finish in two years!
- » Master office administration skills (administrative assistant, secretary, office manager and front-desk staff)
- » Community business tours.
- » Network with business owners.
- » Annual Business Etiquette Dinner.

Contact Kathy Boeger at (620) 792-9203 or [boegerk@bartonccc.edu](mailto:boegerk@bartonccc.edu).  
Learn more at [busadmintech.bartonccc.edu](http://busadmintech.bartonccc.edu).

BARTON  
COUNTY  
CAMPUS  
and online

### Business Management & Leadership

- » Finish in two years!
- » Great start to a career in management.
- » Community business tours.
- » Network with managers in the community!
- » Annual Business Etiquette Dinner.

Contact Kathy Boeger at (620) 792-9203 or [boegerk@bartonccc.edu](mailto:boegerk@bartonccc.edu).  
Learn more at [bml.bartonccc.edu](http://bml.bartonccc.edu).

BARTON  
COUNTY  
CAMPUS  
and online







## Business Management & Leadership

### Entrepreneurship Emphasis

- » Finish in one semester!
- » Everything you need to start and grow your business, including understanding entrepreneurship, general accounting, supervisory skills and management.
- » Community business tours.
- » Network with successful entrepreneurs!
- » Annual Business Etiquette Dinner.

Contact Kathy Boeger at (620) 792-9203 or [boegerk@bartonccc.edu](mailto:boegerk@bartonccc.edu).

Learn more at [bml.bartonccc.edu](http://bml.bartonccc.edu).

BARTON  
COUNTY  
CAMPUS



## Computer Science & Computer Information Systems

- » Transfer seamlessly to a Kansas university.
- » Analyze, design, code and test software projects; manage and secure a company's data; design and program games.
- » Students participate with Local Area Network parties and the student-driven Computer Club.
- » Hands-on learning with the latest technology!

Contact Cristi Gale at (620) 786-1183 or [galec@bartonccc.edu](mailto:galec@bartonccc.edu).  
Learn more at [computerscience.bartonccc.edu](http://computerscience.bartonccc.edu).

BARTON  
COUNTY  
CAMPUS

## Networking

- » Finish a certificate in two semesters or earn a full two-year degree.
- » Become certified in A+, Network+, Security+, Linux+ and MCTS.
- » Complete classes in 8 or 16 week sessions.

Contact Cristi Gale at (620) 786-1183 or [galec@bartonccc.edu](mailto:galec@bartonccc.edu).  
Learn more at [networking.bartonccc.edu](http://networking.bartonccc.edu).

ONLINE  
only



## Technical Accounting

- » Land entry-level positions in businesses, accounting firms and government or non-profit organizations.
- » Accounting specialists process manual and computerized accounting records, including payroll and complete various clerical duties.
- » Community business tours.
- » Network with business owners!
- » Annual Business Etiquette Dinner.

Contact Kathy Boeger at (620) 792-9203 or [boegerk@bartonccc.edu](mailto:boegerk@bartonccc.edu).  
Learn more at [techaccounting.bartonccc.edu](http://techaccounting.bartonccc.edu).

BARTON  
COUNTY  
CAMPUS  
and online



## EARLY CHILDHOOD

### Early Childhood

- » Finish a certificate in two semesters or earn a full two-year degree.
- » Interactive, fun, play-based approach to learning with a purpose.
- » On-site learning opportunities.

Contact Roni Wertz at [wertzr@bartonccc.edu](mailto:wertzr@bartonccc.edu) or (620) 786-1130.

Learn more at [earlychildhood.bartonccc.edu](http://earlychildhood.bartonccc.edu).

BARTON  
COUNTY  
CAMPUS  
and online



## PUBLIC SAFETY

### Corrections

- » Finish a certificate in a semester or earn a full two-year degree.
- » Curriculum developed by industry experts via partnership with the Kansas Department of Corrections.
- » Program can lead to promotion!
- » Kansas Department of Corrections Basic Training may be applied for 15 college credits.

ONLINE  
only

Contact Chris Baker at (620) 792-9244 or [bakerc@bartonccc.edu](mailto:bakerc@bartonccc.edu).  
Learn more at [corrections.bartonccc.edu](http://corrections.bartonccc.edu).

### Criminal Justice

- » Two year completion program and transfer options.
- » A more security-conscious society and population growth will contribute to the increased demand for law enforcement services.
- » Internship opportunities available.

BARTON  
COUNTY  
CAMPUS

Contact Melissa Stevens at (620) 792-9299 or [stevensm@bartonccc.edu](mailto:stevensm@bartonccc.edu).  
Learn more at [criminaljustice.bartonccc.edu](http://criminaljustice.bartonccc.edu).

### Emergency Medical Services Education

- » Finish a certificate in a semester or earn a full two-year degree.
- » Coursework at all levels of pre-hospital emergency care EMR, EMT, AEMT, and Paramedic.
- » Instructor-Coordinator Education Courses available.
- » Nationally accredited through Commission on Accreditation of Allied Health Education Programs (CAAHEP).
- » Great preparation for National Registry Exam!

BARTON  
COUNTY  
CAMPUS  
and other  
locations

Contact Karyl White at (620) 792-9341 or [whitek@bartonccc.edu](mailto:whitek@bartonccc.edu).  
Learn more at [ems.bartonccc.edu](http://ems.bartonccc.edu).

## HEALTHCARE

### Adult Healthcare

- » 90 contact hour Certified Nurse Aide (CNA) training.
- » 75 contact hour Certified Medication Aide (CMA) training.
- » 15 contact hour Certified Nurse Aide Refresher course.
- » Must be 16 years of age to participate in CNA training; must be 18 years of age to participate in CMA training.
- » Reading assessment, background check and pre-payment are required.
- » State certification exam for licensing.
- » Students interested in Barton's Nursing program are required to provide proof of Certified Nurse Aide certification.

BARTON  
COUNTY  
CAMPUS  
and other  
off-campus  
locations

Contact Sara Hoff at (620) 792-9298 or [hoffs@bartonccc.edu](mailto:hoffs@bartonccc.edu).  
Learn more at [adulthhealthcare.bartonccc.edu](http://adulthhealthcare.bartonccc.edu).

## Dietary Manager/Dietetics

- » Earn a certificate or an Associate Degree.
- » Upon completion, qualify to sit for the CDM, CFPP® national credentialing exam.
- » Online with on-site field experience (local facility and preceptor required for the field experience portion of the program).
- » Work toward becoming a Registered Dietitian by transferring to Kansas State University's online dietetics program.
- » Other transfer options available.

ONLINE  
only

Contact Emily Cowles at (620) 786-7562 or [cowlese@bartonccc.edu](mailto:cowlese@bartonccc.edu).  
Learn more at [dietarymanager.bartonccc.edu](http://dietarymanager.bartonccc.edu).

## Medical Administrative Technology

- » Finish in two years!
- » Courses in records management, customer service and business/communication, medical terminology, transcription and coding.
- » Career option for individuals wishing to work in a medical office setting.
- » Employment opportunities at hospitals, clinics, physician's offices and more.

ONLINE  
only

Contact Kim Brennan at (620) 792-9326 or [brennank@bartonccc.edu](mailto:brennank@bartonccc.edu).  
Learn more at [medadmintech.bartonccc.edu](http://medadmintech.bartonccc.edu).

## Medical Assistant

- » Finish a certificate or earn a full two-year degree.
- » Hands-on learning via clinical practice internships.
- » Gain skills to work in a variety of settings: spend time with patients and tackle important office tasks.
- » Online options (Clinical work must be done face-to-face.)
- » 80-hour internship required near end of program.
- » Certification exam offered at the Barton County Campus for both certificate and degree completers.

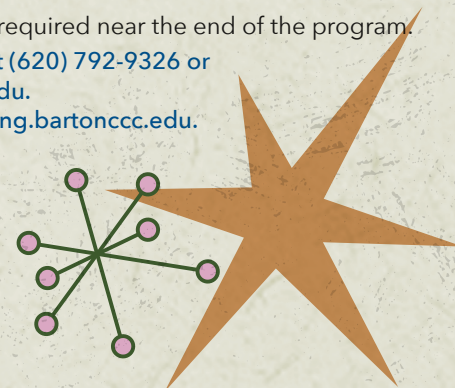
Contact Kim Brennan at (620) 792-9326 or [brennank@bartonccc.edu](mailto:brennank@bartonccc.edu).  
Learn more at [medadmintech.bartonccc.edu](http://medadmintech.bartonccc.edu).

## Medical Coding

- » Complete a certificate!
- » Graduates are eligible to take national certification exams.
- » Coders review patients' records and assign numeric codes for diagnosis and procedures.
- » Work closely with insurance companies and third party payers.
- » Good career choice for those who are interested in medical terminology and pay attention to detail.
- » 80 hour internship is required near the end of the program.

ONLINE  
only

Contact Kim Brennan at (620) 792-9326 or [brennank@bartonccc.edu](mailto:brennank@bartonccc.edu).  
Learn more at [medcoding.bartonccc.edu](http://medcoding.bartonccc.edu).





## Medical Laboratory Technology

- » Finish in two years!
- » Accredited by the National Accrediting Agency for Clinical Laboratory Sciences.
- » Convenient online instruction
- » Lab component may be completed in Barton's MLT lab or in a cooperating lab.
- » Internship required.
- » Fast-track for those with advanced degree.
- » Great preparation for national certification examinations!
- » Seamless progression from Phlebotomist to Medical Laboratory Technician, then to Medical Laboratory

BARTON  
COUNTY  
CAMPUS  
and online

Contact Karen Gunther at (620) 792-9266 or [guntherk@bartonccc.edu](mailto:guntherk@bartonccc.edu).

Learn more at [mlt.bartonccc.edu](http://mlt.bartonccc.edu).

## Medical Scribe

- » Learn to manage all aspects of a doctor's office's day-to-day needs.
- » Create and maintain patient medical records under the supervision of an attending physician.
- » Online classes via the American Healthcare Documentation Professionals Group.
- » Non-credit program with a national certification exam.

ONLINE  
through  
AHDPG

Contact Kim Brennan at (620) 792-9326 or [brennank@bartonccc.edu](mailto:brennank@bartonccc.edu).

Learn more at [bartonccc.edu/onlineprograms/non-credit](http://bartonccc.edu/onlineprograms/non-credit)

## Nursing

- » Practical Nurse (PN) or Associate Degree in Nursing (RN) program options.
- » Both PN and ADN programs are approved by the Kansas State Board of Nursing.
- » The Associate Degree Nursing Program is nationally accredited by the Accreditation Commission for Education in Nursing (ACEN).

BARTON  
COUNTY  
CAMPUS

Contact Dr. Kathy Kottas at (620) 792-9357 or [kottask@bartonccc.edu](mailto:kottask@bartonccc.edu).

Learn more at [nursing.bartonccc.edu](http://nursing.bartonccc.edu).

## Pharmacy Technician

- » 29-credit hour certificate program; may be completed in two semesters for quick transition to the workforce.
- » Great preparation for national certification exams.
- » Fully online.
- » Internship required at an approved pharmacy site.

ONLINE  
only

Contact Latoya Hill at (620) 786-7445 or [hilll@bartonccc.edu](mailto:hilll@bartonccc.edu).

Learn more at [pharmtech.bartonccc.edu](http://pharmtech.bartonccc.edu).

## Phlebotomy

- » Finish in one semester!
- » Internship required.
- » Completers are eligible to take national certification exams.

ONLINE  
only

Contact Karen Gunther at (620) 792-9266 or [guntherk@bartonccc.edu](mailto:guntherk@bartonccc.edu).

Learn more at [phlebotomy.bartonccc.edu](http://phlebotomy.bartonccc.edu).

# BARTON

## ADULT EDUCATION

Need your high school diploma?

Study for and take the GED while pursuing your college degree!

Barton's Center for Adult Education is offering an innovative program that provides adult students a pathway to earn college credit in healthcare or welding while pursuing a Kansas State High School Diploma.

Funding is available to qualifying students. For more information about the Accelerating Opportunity-Kansas (AO-K) Program, Adult Basic Education or GED Preparation classes contact Matthew Connell at [connellm@bartonccc.edu](mailto:connellm@bartonccc.edu) or (620) 787-7563.

## HIGH SCHOOL OPPORTUNITIES

### College Advantage Program

- » Take college classes in high school! (Sophomores, juniors, seniors and gifted underclassmen.)
- » Affordable tuition.
- » General Education and Career & Technical Education classes available.
- » Offerings vary per high school, visit [highschool.bartonccc.edu](http://highschool.bartonccc.edu) for more information.
- » No tuition charged for select career technical courses via Excel in CTE Initiative (SB155)!
- » Plenty of online options!

Contact Karly Little at (620) 792-9294 or [littlek@bartonccc.edu](mailto:littlek@bartonccc.edu).

Learn more at [highschool.bartonccc.edu](http://highschool.bartonccc.edu).

Non-Discrimination Notice: To provide equal employment, advancement and learning opportunities to all individuals, employment and student admission decisions at Barton will be based on merit, qualifications, and abilities. Barton County Community College does not discriminate on the basis of any characteristic protected by law in all aspects of employment and admission in its education programs or activities. Any person having inquiries concerning Barton County Community College's non-discrimination compliance policy, including the application of Equal Opportunity Employment, Titles IV, VI, VII, IX, Section 504 and the implementing regulations, is directed to contact the College's Compliance Officer, Barton County Community College, Room A-123, Great Bend, Kansas 67530, (620) 792-2701. Any person may also contact the Director, Office of Civil Rights, U.S. Department of Education, Washington, DC 20201.