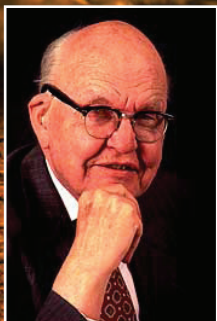


SAVE ^{the} DATE 11.20.17



14th Annual
Jack Kilby Science Day

BARTON
COMMUNITY COLLEGE

Register at:
jackkilbyscienceday.com



SAVE the DATE

11.20.17

14th Annual Jack Kilby Science Day

Keynote Speaker:

Charles W. Rice

KSU Professor, Soil Microbiology

- Exciting Demonstrations
- Fun Hands-on Activities
- Classroom & Lab Tours
- Variety of Breakout Sessions
- Pizza & Refreshments
- Prizes

Cost is
absolutely
FREE
to Registrants.

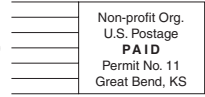
Register at:

jackkilbyscienceday.com

For more information, contact Angel Morgan at
(620) 792-9200 or **morgana@bartonccc.edu**.

Non-discrimination Notice: Barton Community College is an equal opportunity provider and employer. Visit equal.bartonccc.edu for more information.

BARTON
COMMUNITY COLLEGE
245 NE 30 RD • Great Bend, KS 67530



RETURN SERVICE REQUESTED