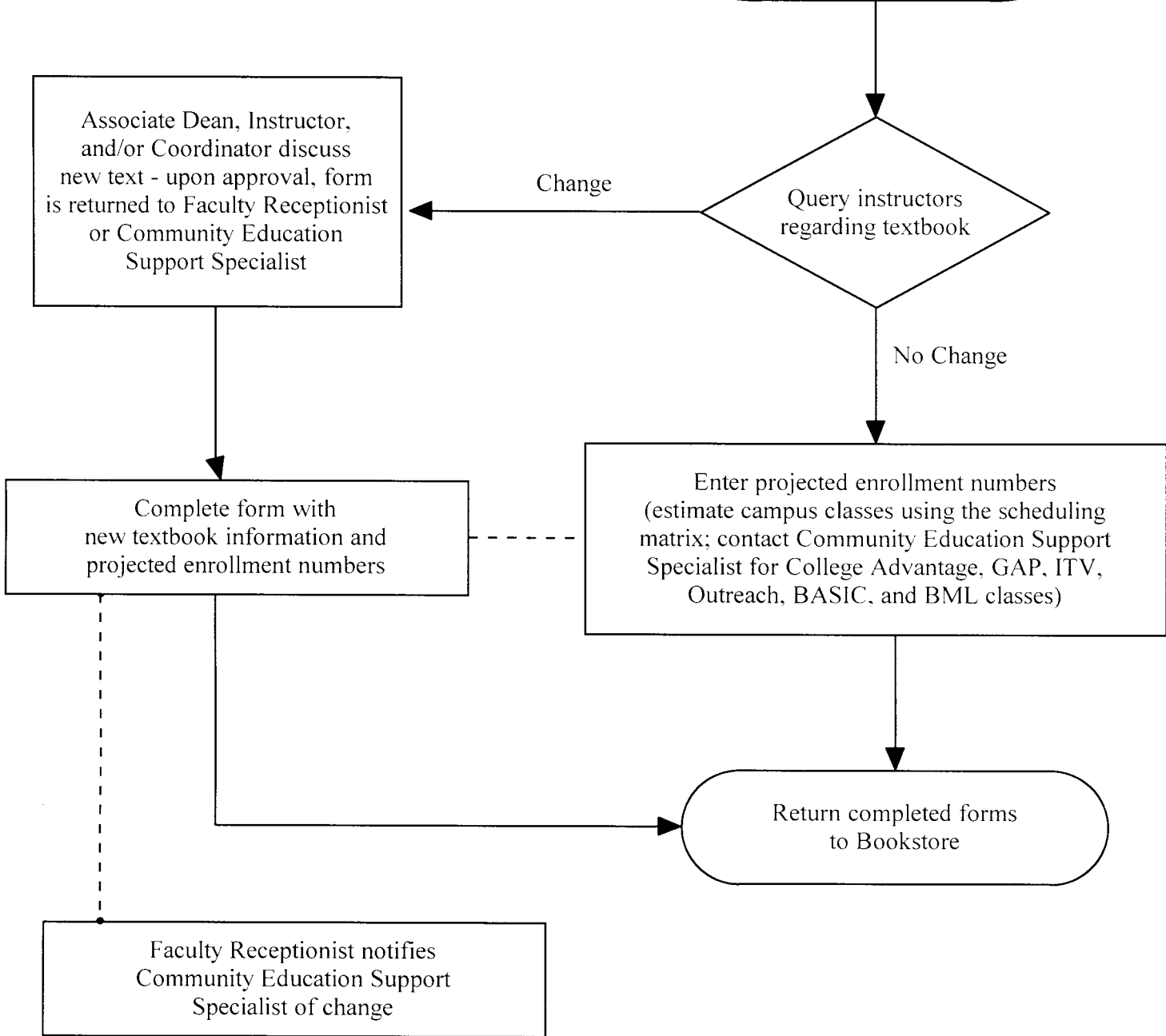


TEXTBOOK ADOPTION PROCESS

**Submitted by the
Textbook Process Review Task Force
May 2005**

Bookstore Staff distributes forms to Faculty Receptionist and Community Education Support Specialist (Community Education receives forms for courses taught exclusively through the department; faculty receptionists receive forms for all other courses)



Bookstore Due Dates
Fall Semester - April 25
Spring Semester - October 15
Summer Semester - March 15