

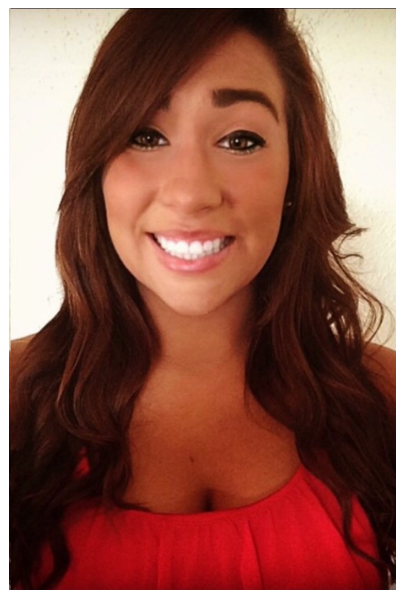
June – August 2017

Central Kansas Educational Opportunity Center



CKEOC Outstanding Participant: Jamie Davis

Jaime Davis, one of this quarter’s outstanding participants, has endured many challenges on the path to achieve educational success. Immediately after graduating from Pembroke Junior-Senior High School in Corfu, New York in 2011, she joined the Army. Subsequent to completing Basic and Advanced Individual Training, she was assigned to Fort Riley. After three years in the Army, Jaime was honorably discharged in July 2014. During her transition back to civilian life, she established a goal to obtain a postsecondary education credential. While taking classes through the Army’s Soldier For Life Transition Assistance Program she was presented information regarding CKEOC’s services.



Knowing that she needed assistance with post-secondary education entrance processes, Jaime reached out to CKEOC for assistance and advice. CKEOC was there to help her all along the way both with admissions and financial aid. After going over the options, she chose to enroll at Barton County Community College seeking an Associate of Arts degree. When asked to elaborate on her experiences with CKEOC Jaime explained, “From the very first appointment, (CKEOC Coordinator) Ray Kruse has been extremely helpful and answered any and all questions I had in an understanding way. He made what I thought was a scary process at first, in regards to enrolling and getting started with college, a very easy and stress free process, whether it was picking a degree, filing out applications, finding classes, completing the FASFA application, or guiding me in the right direction to get answers for questions about my VA education benefits. If I had a question he would email or call me back immediately. He has even gone out of his way to help my family in a time of need and I couldn't be more grateful. Ray Kruse doesn't treat his job like some ordinary job, you can tell he truly cares about those he works with to help, and you see how much pride he has when he does his job. He is honestly one of the many reasons why I want to become a lawyer. We both share a common passion which is helping others in need, to become more successful in life. “

Inside this issue:

CKEOC Outstanding Participants (Cont.)	2-3
Matt Connell	4
Farewell Mary Dino	5
IRS Data Retrieval Tool Taken Offline	5
BCC Enrollment Days	6
ASL and PTK Graduates	7
Congratulations! CKEOC’s Class of 2017 Graduates	8-10
ACT Dates	11
CKEOC Summer Hours	11
BCC Information	12
GED Info & CKEOC Staff and locations	13
CKEOC Information	14



CKEOC Outstanding Participant: Jamie Davis (cont.)



In May 2016, Jaime graduated from Barton Community College and was preparing to take the next step by enrolling at Kansas State University with the goal of obtaining a Bachelor's Degree. Once again, Jaime, reached out to CKEOC for assistance with the transfer process including admissions and financial aid.

With her Bachelor's Degree within reach, Jaime now has post-baccalaureate studies in her sights. "I would like to pursue both law school and business school to obtain both my J.D. and M.B.A. I would ultimately like to open up my own law firm where I can help veterans, and anyone who has ever been "wronged". Becoming a college professor or obtaining a job in the political field is also something that piques my interest."

With nearly 3 years of post-secondary education completed, Jaime reflects fondly upon her experiences: "I'd say the entire college experience in itself has been awesome so far. But I'd have to say the most positive thing was learning that communication is the key to success. Your professors are not scary robots; they are there to help you succeed in life. They understand that sometimes life happens, but as long as you're willing to communicate with them, they will show you compassion and understanding. I have met some very awesome professors and I couldn't begin to even express the gratitude I have for them. I am beyond thankful for all that they do."

In her spare time, Jaime enjoys feeding her thirst for knowledge by learning about new things and taking in new experiences with friends. She also enjoys spending time with her three pets: a Yellow Lab named Reno, a German Shepherd, Roxy Anne, and Mr. Bojangles the cat.



In conclusion, Jaime adds: "I have been through a lot my whole life, and it always seemed like every time I took two steps forward I would take a giant leap back. Learning that it was okay to ask for a "helping hand" was one of the hardest things I ever had to do, but it's one of the best decisions I had ever made. Everyone has their own set of problems at some point in time, and it is too easy to run away and avoid them. Facing the problem and striving to become the most

successful person you can be, even if that means asking for help, is to me the bravest thing you can do."

LAWYERS & LEADERS

Outstanding Participant: Morgan Kurtz



Morgan Kurtz, one of our Outstanding Participants of the Quarter, graduated from Salinas High School, in Salinas, California. In 2012, she decided she wanted to be closer to her dad in Kansas. This prompted Morgan, her significant other, Gus, and her dog to make the move to Great Bend, to start a new life.



Morgan was first introduced to CKEOC by one of our partners at Great Bend KansasWorks. Liz Klima, Academic Advisor, assisted her with completing her FAFSA and the rest of

the financial aid process. She also received assistance with scheduling a campus visit and placement testing. These processes allowed her to be eligible to enroll in classes at Barton Community College. Morgan reflects fondly on her interactions with CKEOC staff, conveying, "The services provided to me changed my life."

Morgan graduated in May 2017 from Barton Community College with an Associate of Applied Science Degree in Nursing. She stated, "I knew by going into nursing, I would be able to have a diverse career where I could help my community in many aspects. This field of work is sometimes hard, yet so rewarding." Morgan added that her ultimate goal in using her college degree is "to be the best patient advocate I possibly can." When asked to share details about her college experience, she related, "Ultimately, I have never worked so hard in my life for something that did not have immediate results. Going back to school after a long break from high school was very challenging, but I knew I wanted a better future than the one I previously had."

Morgan is very thankful for all the support and encouragement she received from Gus during the whole college experience. Pursuant to obtaining a nursing degree, she gained employment at the Great Bend Regional Hospital. She and Gus have 3 fur babies and are expecting the arrival of their first child. In her spare time, Morgan likes being outside when the weather permits. She enjoys going on walks with her dogs, fishing, hunting and going to the lake.



Morgan's advice is "sticking out the lowest lows in life and pushing through them." She adds "you will surprise yourself at how strong you are and what you can accomplish!"



Matt Connell

Barton Community College Adult Education Coordinator Begins Duties



EOC welcomes Matt Connell as the Barton County Community College Adult Education Coordinator. Matt has already proven he is vested in being a dedicated partner of the EOC program by working together to plan and build successful processes. Through his work, he demonstrates a passion to assist potential students/participants through high school diploma and post-secondary education completion.

Matt comes highly qualified with a plethora of knowledge and expertise. He graduated with Bachelor and Master degrees in education and moved directly into various teaching positions. Matt has and still holds more than just one position along with his Adult Education Coordinator duties due to his passion to assist all he can to reach their educational goals.

For additional information regarding the Adult Education program please feel free to stop by or call:

BCC- Adult Education Center or EOC offices
1025 Main Great Bend, KS
AEC: 620-786-7560
EOC: 620-793-8164

Congratulations Matt!



Farewell From Mary Dino

My retirement comes with much joy and sadness. Joy because we recently got a new yellow lab puppy (Izzy) and will be getting another black lab puppy (Odie) very soon. I definitely need to be retired to handle “puppies” once again. So right there is where all my “FREE” time will be spent. Eventually, my husband and I would like to do some traveling to places on our bucket list that we have never been. However, I am sad to leave behind all the awesome

friends I have made along the way. It’s been a wonderful 10 years with

CKEOC, and I can honestly say I LOVED this job. The whole premise of EOC plays such an important role in assisting others to seek an education and is so rewarding to see the process unfold and the success of participants. I want to take this time to say “THANK YOU” to all of you who have made my job so worthwhile and enjoyable. Susie, Liz, Ray and Mary I will surely miss you all. This is not “Good-Bye,” but rather “See You Later.”



IRS Data Retrieval Tool Taken Offline



On March 30th, the Internal Revenue Service (IRS) and the Department of Education Office of Federal Student Aid (FSA) released a joint statement indicating that the Data Retrieval Tool (DRT) would be taken offline due to security concerns. This message came following the discovery of evidence that hackers had used the tool to acquire sensitive taxpayer information that could be used to file fraudulent tax returns. While the initial statement did not give a timeframe on how long the tool would be unavailable, subsequent statements indicate that the goal is to address the security concerns and have the DRT available to coincide with the release of the 2018-19 Free Application for Federal Student Aid (FAFSA) on October 1, 2017. The absence of the tool may make completing the FAFSA a little more challenging for some, so it is necessary to point out that the application can still be completed by entering tax information manually. Please contact your local CKEOC office if you would like assistance in the manual entry of the necessary tax information required to apply for federal student aid. One of our advisors will assist you with the accurate completion of the application.



Barton Community College Enrollment Day



Barton Community College hosted one of their many enrollment days on April 19, 2017. Liz Klima, CKEOC Academic Advisor, accompanied the following participants to take part in this event: Melani Garcia, Alicia Czapinski, Jason Czapinski and Daniel Rodriguez.

The future Barton students were able to accomplish many tasks needed to begin the enrollment process that started with assessment testing, a campus visit, and a housing tour. The group was then accompanied and introduced to staff in the admissions, financial aid, and business office. The day concluded with each potential student meeting with an Academic Advisor to assist them with class selections and enrollment.

If you are interested in attending BCC this fall and would like to attend an enrollment day you still have several dates remaining:

Wednesday, June 7: 1 p.m.

Wednesday, June 14: 1 p.m.

Wednesday, June 21: 1 p.m.

Monday, June 26: 1 p.m.

Wednesday, July 12: 1 p.m.

Wednesday, July 19: 1 p.m.

Wednesday, July 26: 1 p.m.



To sign up for an enrollment day you can either contact an CKEOC Academic Advisor or go to <http://bartonccc.edu/admission/enrollmentdays>.

CKEOC Congratulates ASL and PTK Graduates

Graduating members of Phi Theta Kappa (PTK), the world’s largest and most prestigious honor society for two-year college students and Alpha Sigma Lambda (ASL), a national honorary that celebrates the scholarship and leadership of adult students, are being recognized for their accomplishments. CKEOC would like to recognize it’s participants that count themselves as members of these prestigious organizations.



Mary Bitter



PHI THETA KAPPA
HONOR SOCIETY

Morgan Kurtz

Hypatia Wallis

2017 CKEOC GRADUATES

Barton County Academy

Guadalupe Allende
Rafaela Batres

The Learning Center of Ellis County

Kaylee King
Rae McClung

Ellinwood High School

Dylan Dannar

Great Bend High School

Josephine Calzada Flores
Melani Garcia
Mario Martinez Baray
Darien Sanchez
Omar Talamantes
Braulio Vargas

Marysville High School

Danielle Ahern
Skyler Ballman
Dayne Brown
Abel Cisneroz
Taylor Crome
Jayton Haggard
Ashlyn Jones
Kylie Kroeger
Adam Lindhorst
Ronnie Pacha
Peyton Price
Kaitlyn Scott
Jaylyn Self
Katelyn Tommer
Caleb Vogelsberg

Hoisington High School

Jeremy Breit
Tristan Byers
Tyan Schremmer

Barton Community College

Erick Alcala Reyes
Ashley Allen
Dustin Anderson
Monica Anderson
Christopher Anderson
Kadella Anderson
Dail Anguiano
Mary Bitter
Caroline Brankley
Channing Brewer
Aleesha Brown
Brian Brown
Kiralynn Bunn
Savannah Caldwell
Desmund Cantu
Jason Carlin
Andrew Carroll
Jordan Cherry
Kiana Corpuz
Nicco Cousins
Jessica Crowe
Rex Cruse- Nursing
Alan Cugler
Kristopher Daggett
Murissa Daniels
Janet David
Daisy Delgadillo
Georgi-lilee Delgado
Jasmine Dickerson



Barton Community College (Continued)

Scott Finessy
Charles Fisher
Cynthia Garcia
McKenna Hammeke
Cheyenne Hayes
Ryan Heskett
Christopher Holland
Joshua Howe
Mark Israel
Yin Ting Jenkins
Michelle Jennings
Emily Johnson
Brian Jonas
Julie Keller
Jeremy Kincy
Caitlin Kline-Martin
Morgan Kurtz
Tuan Lam
Jamie Martinez
Lakeisha Moore
Limary Ortiz
Lesidia Parkmon
Alexander Phouthavong
Christopher Pollard
Samantha Putnam
Rodolfo Ramirez
Rodrigo Razo
Jonni Reynolds
Symone Rippy
Amber Shearer
Wilhelmina Spears
Michael Steede
Jonell Stukey

Devin Sublett
Walter Tillson
Barbara Vansteenburgh
Andrew Vassallo
Rochelle Visitacion
Daniel Vstecka
Kalen Walker
Hypatia Wallis
Paul Washington
Kaitlyn Zecha
Nora Zuniga

North Central Kansas Technical College

Trayce Dinkel
Mandy Ehrlich
Theresa Ehrlich
Sara Hughes
Alondra Meraz
Zachary Newacheck
Bryson Parson
Richard Ruffus
Larisa Smith
Nelson Taylor
Robert Yost

Upper Iowa University

Katherine Turner

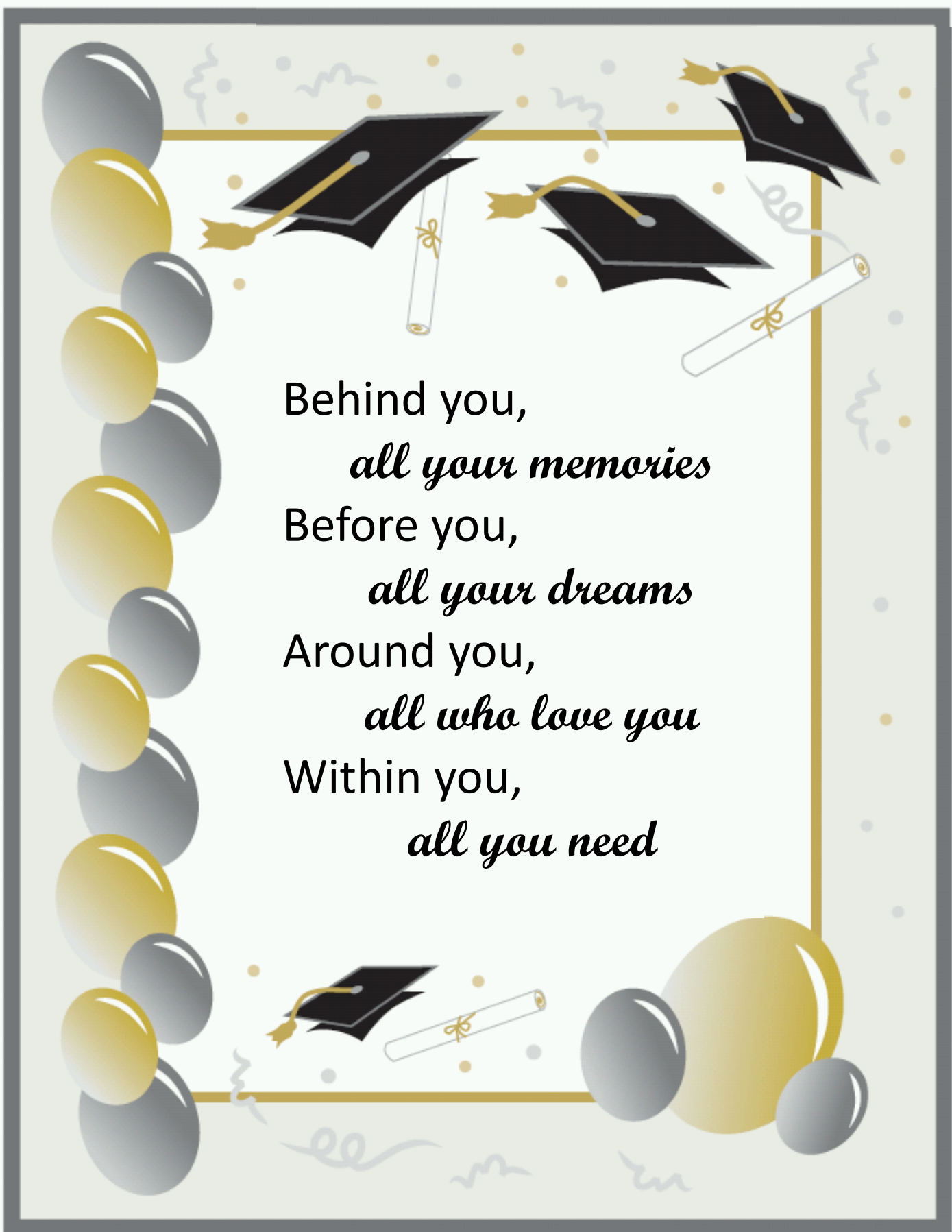
Central Texas College:

Cynthia Davis
John Hands
Jon Soyke

Old Towne Barber College

Jared Keenan

2017



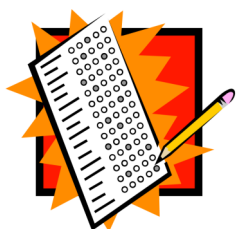
Behind you,
all your memories
Before you,
all your dreams
Around you,
all who love you
Within you,
all you need

ACT Test Dates & Sites

If you or someone you know are planning to attend a post-secondary college in the spring of 2017, it is time to mark your calendars for the following dates for the ACT test. You may register by mail or online at www.actstudent.org and you can request a registration packet from ACT.

Abilene – Abilene High School	June 10
Concordia – Cloud County Community College	June 10
Hays – Hays High School	June 10
Junction City – Junction City High School	June 10
Manhattan – Kansas State University	June 10
Pratt – Pratt Community College	June 10
Russell – Russell High School	June 10
Salina – Kansas Wesleyan University	June 10
Salina Lakewood Middle School	June 10
Wamego – Wamego High School	June 10

Upcoming ACT test dates are September 9 and October 28, 2017. Test sites for fall have not been announced yet. Please check with your school counselor.



CKEOC to Observe Summer Office Hours

From May 15th through August 4th 2017 CKEOC will observe summer office hours. Between these dates, the offices will be closed on Fridays, but will have extended hours of operation from Monday through Thursday. Please contact the CKEOC office nearest you to receive additional information.



MAIN CAMPUS PLANNING CALENDAR

Online Classes

Fall Session 1 (9 Weeks)
Aug 7—Oct 8

Fall Session 2 (17 Weeks)
Aug 14—Dec 10

Fall Session 3 (8 Weeks)
Oct 9—Dec 10



June 5: Summer Classes Begin
July 4: No Classes/Offices Closed
July 31: Last Day of Summer Classes
July 27: Last Day 2nd 4-wk Session
Aug 4: Fall Registration Ends
Aug 7-15: Fall Late Registration
Aug 16: Fall Classes Begin
Aug 25: Last Day for Refund
Sept 4: No Classes/Offices Closed

FORT RILEY CAMPUS PLANNING CALENDAR

LSEC SUMMER INTERSESSION JULY 2—July 31
LSEC CYCLE 6 AUGUST 2—SEPTEMBER 15
LSEC CYCLE 7 SEPTEMBER 19—OCTOBER 31

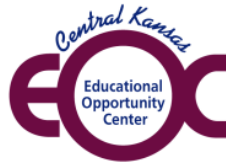
Check with CKEOC for Forthcoming Enrollment Start Date
1st Day of Class—Last Day to Enroll (All)

COLLEGE PROGRAM CYCLE 5 AUGUST 9—OCTOBER 3
COLLEGE PROGRAM CYCLE 6 OCTOBER 11—DECEMBER 5

Check with EOC Staff for Forthcoming Enrollment Start Date
(1st Day of Class)—Last Day to Enroll (All)

CKEOC STAFF AVAILABLE TO ASSIST YOU WITH QUESTIONS & EOC SERVICES

Liz Klima—Academic Advisor/DS



Ray Kruse—Coordinator and
Academic Advisor

**CENTRAL KANSAS EDUCATIONAL OPPORTUNITY CENTER IS PROUD TO BE A PART OF
BARTON COMMUNITY COLLEGE WHO SUPPORTS OUR PROGRAM AND SERVES AS
OUR HOST INSTITUTION**

NON-DISCRIMINATION NOTICE:

Barton Community College is an equal opportunity provider and employer.
Visit equal.bartonccc.edu for more information.

GED CLASS ORIENTATION

Contact Information for GED class orientation:

BCC/Great Bend	For more information please contact:	620-793-5794
Cloud CCC – Geary County Campus	August 15 & 16 October 17 & 18	785-238-8010
Hays – FHSU Rarick Hall 328	For more information please contact:	785-460-5486
Manhattan	For more information please contact:	785-539-9009
Salina	July 10 – 14 September 5 – 8	785-309-4660



CKEOC Staff and Locations

Great Bend
 1025 Main St
 620-793-8164
Academic Advisor/Data Specialist
 Liz Klima

Project Director
 Susie Burt

Junction City
 1012 A West Sixth
 785-238-5200
Coordinator/Academic Advisor
 Ray Kruse
Secretary/ Data Specialist
 Mary Shane



1025 Main Street
Great Bend, KS 67530

ADDRESS SERVICE REQUESTED

Non-Profit Org.
U.S. Postage
PAID
Permit N. 11

About CKEOC

The Educational Opportunity Center is 100% funded by the U.S. Department of Education and is one of the TRiO programs. TRiO began with Economic Opportunity Act of 1964, in response to the administration's War on Poverty.

TRiO programs include eight outreach and support programs targeted to help disadvantaged students progress from middle school to post-baccalaureate programs.



33 Counties Served by CKEOC

Barton	Mitchell	Rice
Clay	Morris	Riley
Cloud	Ness	Rooks
Dickerson	Norton	Rush
Ellis	Osborne	Russell
Ellsworth	Ottawa	Saline
Geary	Pawnee	Smith
Graham	Phillips	Stafford
Jewell	Pottawatomie	Trego
Lincoln	Pratt	Wabaunsee
Marshall	Republic	Washington

