

June – August 2016

Inside this issue:

CKEOC Outstanding Participants (Cont.)	2-3
Fort Riley Education Center Spotlight: Kansas State University	4
LPN & RN Pinning	5
BCC Adult Learning Center GED Graduates	6
Congratulations! CKEOC's Class of 2016 Graduates	7-11
BCC Enrollment Days & ACT Dates	12
BCC Information	13
GED Info & CKEOC Staff and locations	14
BCC Natural Gas Program	15
CKEOC Information	16

Central Kansas Educational Opportunity Center



CKEOC Outstanding Participant: Laura Branda



We are so very proud to introduce one of our outstanding Participants of the Quarter, **Laura Branda**. Her association with CKEOC began at Salina Adult Education Center. Laura was among students that attended workshops offered by CKEOC in planning for college, choosing fields of study, and general life skills. Having the knowledge of CKEOC's

existence was key in knowing where to turn for help when she was ready to pursue a postsecondary education.

Laura graduated with her GED in December of 2012, and it was not until August of 2015 that she made a decision to enroll at the Academy of Hair Design in Salina. She remembered CKEOC's services from the presentation to the group at SAEC, and thus enlisted the help of CKEOC Advisor, Mary Dino. Laura stated, "Mary Dino made arrangements for a campus visit to Hays Academy of Hair Design/Salina, assisted with financial aid, admissions and enrollment, all of which was amazing. For me, personally, just the thought of applying for college was a little scary, and so I really appreciated having someone help me through the process who was always willing to work with my schedule and answer any questions I had. I can honestly say I couldn't have done this without her." She is expected to complete the cosmetology program in October of 2016.



CKEOC Outstanding Participant: Laura Branda (cont.)



smart enough for any kind of higher learning, and I'm glad to be proven wrong." She says it has been a positive experience for her so far and has helped her grow. She is looking forward to graduating and proving to herself that she can and did accomplish what she set out to do. Her ultimate goal is to become a licensed cosmetologist and work as a stylist in a salon, which will allow her to express her artistic abilities.

Laura currently works at Goddard Sawmill in Simpson, KS as a crate/pallet builder, when she is not attending school.



Laura is such an inspiration when she talks about her college experience. She drives 40 miles to school one way each day, and says it is completely worth it. She claims, "It's definitely been a huge step out of my comfort zone. I'm shy by nature, so school always seemed daunting. I also never thought I was



She is the second of 5 children and is very close to her family. They try to get together when they can and go fishing. In addition to her job and school, Laura helps her mother take care of her grandmother. She loves reading, drawing, and going to concerts.

Laura's final remark was, "I'm extremely grateful for the people who put their time and effort into helping me get to where I am today. I'm really blessed to have such a wonderful support system. Hard work definitely pays off, and I really feel that if I can do it, anyone can!"

Outstanding Participant: Anna Matsokina

Anna Matsokina is truly an outstanding participant of the quarter! After completing her high school education in Russia, Anna found herself yearning to broaden her horizons by learning new languages and experiencing other cultures. It was this drive that eventually brought her to the United States. After living here for a couple of years, she made the decision to join the Army.



It was during her transition out of the army that Anna was first introduced to CKEOC. She was attending a briefing through the Soldier For Life Transition Assistance Program – a series of classes designed to help soldiers re-integrate themselves into civilian life – where she participated in a workshop delivered by CKEOC Staff. Anna is very passionate about building a better and safer environment and wanted to become a Civil Engineer. During this time Anna was already working toward her end goal by attending classes at Barton Community College and Kansas State University, but had her sights on attending The University of California, Berkeley. She had researched Civil Engineering programs and found that UC Berkeley was ranked as having the top program in the country by US News and World Report. After the presentation Anna reached out to CKEOC staff to assist her with attaining her dreams. Through the provision of EOC services including help with admissions, transfer assistance and financial aid support she was able to accomplish her goals.

As one would expect, getting into such a high profile and selective program has its challenges. Anna had the grades she needed, but was concerned about writing the two required essays. Over the course of a month Anna met several times with CKEOC staff to receive assistance with writing her admissions essays. The end result was a success. When asked how CKEOC was able to assist her with her transfer, Anna explained “Ray helped in answering questions I had in regard to financial aid and also gave me valuable pieces of advice in editing my essays.” Ultimately, Anna was granted admissions to the Civil and Environmental Engineering Program at UC Berkeley and started attending classes in September 2015.

When asked about her college experience, Anna indicated “It has been quite challenging but it is absolutely amazing. I am learning a lot every day and I also meet so many interesting new people: professors, other students, and also people like Ray who help along the way” She appreciates the help provided by CKEOC staff by adding “they are very nice people who are trying to improve other people’s lives. They are very responsive and enthusiastic.”

Anna has now settled into her new school and has built a routine. Because of the rigors of the program she has chosen not to work so that she can focus exclusively on her studies. Although she has a hectic schedule, she still finds time for recreation and spends her free time exploring new cities, enjoying the outdoors, attending musical performances and practicing yoga.



Fort Riley Education Center Consortium Spotlight:

KANSAS STATE UNIVERSITY

For this issue's Fort Riley Education Consortium Spotlight we are highlighting Kansas State University. We were able to sit down with Dominic Barnes, Military Student Services Coordinator for KSU's Fort Riley Office to discuss their offerings. Dominic indicated that he has two primary roles in his position. The first role is to provide support for the Airframe and Powerplant Review program on post. The second role is to provide advising and coordination for KSU Resources and be a point of contact for KSU's four campus locations: Manhattan, Salina, Olathe, and Global (online).

The Airframe and Powerplant Review Program is KSU's sole program offering on Fort Riley. This is a program that is open to soldiers in specific Military Occupational Specialties (MOS) (Most of 15 series as well as 67H and 67G) and allows students to combine their job training with three classes provided by KSU to prepare and qualify them to take the FAA Airframe and Powerplant Certificate exam. After successfully completing the exam, the student will be certified to perform almost all repair and maintenance work on airplanes. As it usually requires a Bachelor's degree to be able to sit for this exam, the KSU's program offers eligible students a great benefit in allowing them to use their job training in lieu of classes to obtain their certification. The three classes that make up the program are: General Review, Airframe Review, and Powerplant Review. The classes can be taken in any order and are each 8 weeks in length, making the classroom training 6-7 months in length. In order for a class to be held there has to be at least 10 people signed up. This means that the training may take longer if there are periods where there is not sufficient enrollments to hold a class. To test for the Certificate the student also has to have the required on the job training. This can come before during or after the classes. Tuition Assistance (TA) provided by the Army can cover the majority of the cost of the classes.

Dominic explained that KSU is uniquely positioned as the only consortium member that has a main campus that is part of the local community. The proximity of KSU creates high local awareness on Fort Riley, which often leads soldiers and their families to visit his office in search of programs other than the Airframe and Powerplant Review Program. It is at this time that he provides pre-advising and coordination for programs available on the other campuses. He will talk to the student make sure that KSU has offerings that match their goals. K-State has partnered with community and technical colleges throughout Kansas to offer working professionals the opportunity to earn an associate degree locally and then a bachelor's degree online through the Global Campus." These agreements, called 2+2 Partnerships, exist with 24 community colleges in Kansas and with 5 community colleges outside the state. Colleges on Fort Riley that are 2+2 Partners are Barton County Community College, Hutchinson County Community College, and Central Texas College.



LPN & RN Pinning

Barton Community College Nursing Department held their annual Nursing Pinning Ceremony on Friday, May 13th, at the BCC Fine Arts Auditorium. Among the recipients who graduated, were two CKEOC participants, Christina Delgadillo-RN and Morgan Kurtz-LPN. Liz Klima, CKEOC Academic Advisor, was in attendance to celebrate their accomplishments. **CONGRATULATIONS CHRISTINA AND MORGAN!!!!**



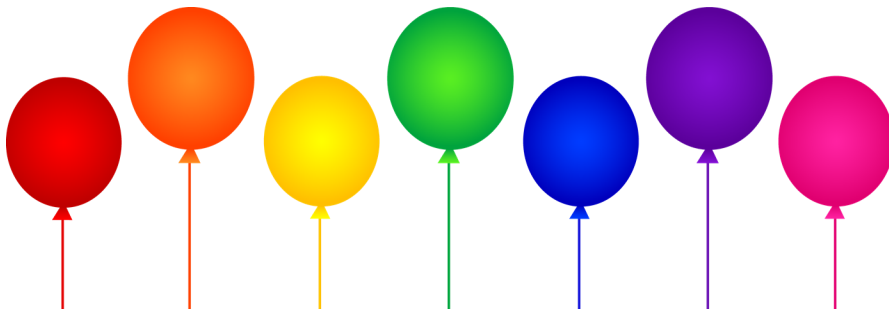
CARING TODAY FOR A
HEALTHIER TOMORROW

Barton Center for Adult Education Graduates



The Barton Center for Adult Education recognized its graduates at a ceremony held on Friday, May 13th at the Barton Community College Physical Education Building. Several of Central Kansas Educational Opportunity Center's participants were among the graduates.

Congratulations on your achievement!!



Congratulations!

Barton Graduates



Class of
2016

2016 CKEOC GRADUATES

Barton Center For Adult Education

Tommy Blair
Sally Cruz
Alex Delgado
Marilu Garcia
Tessa Hoffman
Joshua Howe
Desmond Jackson
Asael Linares
David Logsdon
Aubrianna Miller-Hayward
Edward Parker
Katelyn Paxton
Alexander Phouthavong
Rodolfo Ramirez
Jeremiah Ramsey
Hayley Ross
Victoria Sanchez
Dixie Shuck
David Villalpando
Adam Walker
Brian White

The Learning Center of Ellis County

Mayank Bhakta
Mohit Bhakta
Emily Blunt
Caydon Schleder
Blake Slife

Ellinwood High School

Dylan Elsen

Great Bend High School

Vianey Caraveo
Marcos Cerda
Gino Chamagua
Randi Disney
Matthew Garcia
Jahtziri Lara
Jesus Lujan
Maria Ramirez Balderrama
Daniela Reyes
Tanya Sanchez
Santiago Talamantes
Austin Vander Meer
Erick Zayas

Hoisington High School

Xavier Beran

Larned High School

Yesenia Valadez
Andreas Vereecke

Marysville High School

Claire Cudney
Kylee Fink
Tyler Godfrey
Sarah Hu
Allison Manley
Andee Marquardt
Kayla Milner
ShayeAlta Naaf
Aubrie Peschel
Caleb Richardson
Elizabeth Rombeck
Aaron Weeks



**Barton Community
College**

Dail Anguiano
Grace Antillon
Charles Austin
Aileen Bacon
Omar Barragan
Jerica Battaglear
Cheyenne Beakey
McKeely Beard
Shynera Berry
David Bixenman
Erin Carris
Ki'Era Coleman
Tamara Conrad
Dena Cook
David Cortez
Mark Dahl
Tiffany Day
Christina Delgadillo
Karly Esfeld
Michael D. Evans
Stephon Ferguson
Jayden Flowers
Christina Garcia
Alexzander Green
Samuel Guyton
Sandra Havel
Rebecca Hoffman
Christopher Holland
Angela Irvin
Mark Israel
Geisha M. Jones
Jazmyn Kenner
Jennifer King
Michelle Knight
Morgan Kurtz

Richard Lara
Dylan Lonsway
Juliann Martin
Jean Maxi
Troy Miranda
Bruce Moore
David Noser
Timothy Oakley
Ross Oeser
April Paulsen
Zane Peirce
Emmanuel Poblano
Jose Reza Martinez
Lauren Ramos
Christina M. Schubert
Samantha Torres
Nicole Tracy
Fuatai Valoaga
Mary Beth Valoaga
Timothy Valoaga
Jessica Vann
Andreas Vereecke
Mark Villanueva
Molly Westbrook
Troy Whitehead

**North Central Kansas
Technical College**

Jessica Abernathy
Tiffany M. Cox
Tyler B. Ediger
Mandy A. Ehrlich
Theresa A. Ehrlich
Neil R. Harris
Mary K. Owston
Richard Ruffus
Amanda K. Yunker

2016

**Hutchinson Community
College**

Selina Beydili-Fogg
Sandra Jones
Omar Barragan
Christopher Holland
Marion Jackson
Breahna Maimone
Demarcus Otis
Hunter Schaub
Justin Tracy
Taylor Woodard
Stephany Villalvazo

Central Texas College

Norberto Anzures Jr.
Robert Keys, III
Tasha Owens
Joshua Sagler

Upper Iowa University

Roberta Bristol
Ruth Gibson
Jenise Hiram

Kansas State University

William Clark
Jawan Herron
Cody Hughes
Katelyn Parente
Charles Preston
Michael Stevens

**Salina Area Technical
College**

Travis Graham
Joshua Martinez
Monica Arias Jasso
Jared Veal

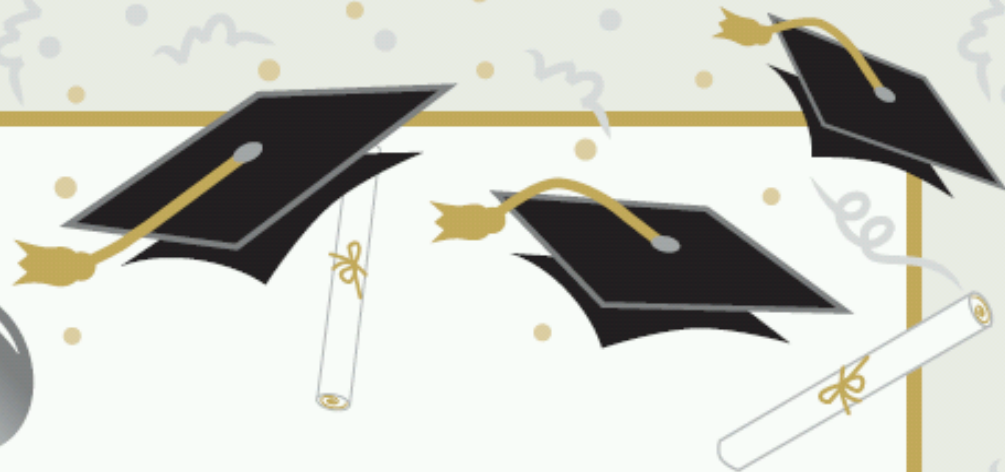
**Manhattan Area Technical
College**

Kenneth Hager
Sylvia Jones
Edward Wagoner III
John Wear

Eric Fisher Hair Academy

Eustancia Waldschmidt

*Congratulations
Class of 2016*



*"He who cherishes a beautiful
vision, a lofty ideal in his heart,
will one day realize it.*

*Dream lofty dreams and as
you dream so shall you become."*

- James Allen

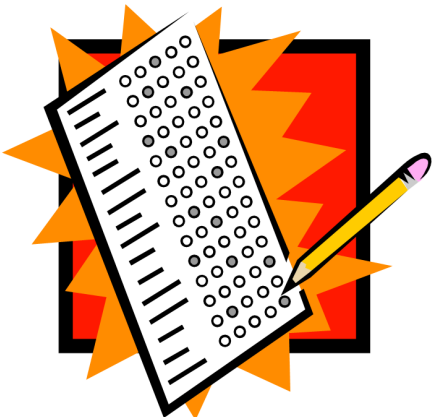


BCC Enrollment Day



Barton Community College Enrollment Day was held on May 18, 2016. Liz Klima, CKEOC Academic Advisor, accompanied the following participants as they attended: Josie Hickey, Janzen Sangals, Shawntel Bowman, Gino Chamagua, Muriel Hunter, Austin Vander Meer, and Aubriana Miller-Hayward. Participants included graduates of Barton County Adult Learning Center GED program and Great Bend High School as well as returning BCC students who are continuing their post-secondary education.

ACT Test Dates



Upcoming ACT test dates are September 10, 2016 and October 22, 2016. Test sites for fall have not been announced – please check with your school counselor.

You may register by mail or online at www.actstudent.org and you can request a registration packet from ACT.



Why Barton Natural Gas?

- Certificate and Degree programs
- Industry-driven program and curriculum
- Faculty and trainers directly from industry
- Technology-driven program; cutting-edge equipment
- Students recruited right out of the class room by industry ;jobs readily available
- Hands-on training
- Paid internships available
- Student Field Trips to Kansas Pipeline Association Safety meeting, the Kansas One Call Meeting, the Kansas Corporation Commission Safety Meeting. Cashco, Ellsworth, KS - a company that manufactures numerous control valves, relief valves and other equipment used in the hydrocarbon field. Northern Natural Gas, Bushton KS - a natural gas compressor station.

There are many opportunities in the Natural Gas Transmission and Distribution industry for those with a strong technical background. Barton's program delivers hands-on training that helps you gain skills necessary for employment with minimal "on the job training" by the company.

Technicians are needed for corrosion control, gas measurement, instrumentation and electrical controls, pipeline construction, and programmable logic controller (PLC) programming.

The Gas Pipeline Tech program provides training in comprehensive gas industry technologies recommended by regional gas pipeline companies. A 35 credit certificate is available as well as a 64 credit AAS degree.



MAIN CAMPUS PLANNING CALENDAR

Online Classes

Fall Session 1 (9 Weeks)
Aug 8—Oct 9

Fall Session 2 (17 Weeks)
Aug 15—Dec 11

Fall Session 3 (8 Weeks)
Oct 15—Dec 11



July 4: No Classes/Offices Closed
July 5: 2nd 4-wk session classes start
July 27: Last Day 8-wk Session
July 27: Last Day 2nd 4-wk Session
Aug 5: Fall Registration Ends
Aug 8-17: Fall Late Registration
Aug 17: Fall Classes Begin
Aug 26: Last Day for Refund
Sept 5: No Classes/Offices Closed

FORT RILEY CAMPUS PLANNING CALENDAR

LSEC CYCLE 6 AUGUST 1—SEPTEMBER 14
LSEC CYCLE 7 SEPTEMBER 16—OCTOBER 28

Check with CKEOC for Forthcoming Enrollment Start Date
1st Day of Class—Last Day to Enroll (All)

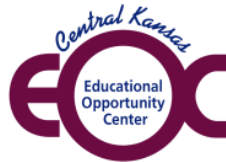
COLLEGE PROGRAM CYCLE 5 AUGUST 10—OCTOBER 4
COLLEGE PROGRAM CYCLE 6 OCTOBER 12—DECEMBER 6

Check with EOC Staff for Forthcoming Enrollment Start Date
(1st Day of Class)—Last Day to Enroll (All)

CKEOC STAFF AVAILABLE TO ASSIST YOU WITH QUESTIONS & EOC SERVICES

Liz Klima—Academic Advisor/DS

Mary Dino—Academic Advisor



Ray Kruse—Coordinator and

Academic Advisor

**CENTRAL KANSAS EDUCATIONAL OPPORTUNITY CENTER IS PROUD TO BE A PART OF
BARTON COMMUNITY COLLEGE WHO SUPPORTS OUR PROGRAM AND SERVES AS
OUR HOST INSTITUTION**

NON-DISCRIMINATION NOTICE:

Barton Community College is an equal opportunity provider and employer.
Visit equal.bartonccc.edu for more information.

GED CLASS ORIENTATION

Contact Information for GED class orientation:

BCC/Great Bend	August 3	620-793-5794
Cloud CCC – Geary County Campus	August 9 & 10	785-238-8010
Hays – FHSU Rarick Hall 328	August 17 & 18	785-460-5486
Manhattan	August 19 & 20	785-539-9009
Salina	No dates available	785-309-4660



CKEOC Staff and Locations

Great Bend
 1025 Main St
 620-793-8164
Academic Advisor
 Mary Dino
Academic Advisor/Data Specialist
 Liz Klima

Project Director
 Susie Burt

Junction City
 1012 A West Sixth
 785-238-5200
Coordinator/Academic Advisor
 Ray Kruse
Secretary/ Data Specialist
 Mary Shane



1025 Main Street
Great Bend, KS 67530

ADDRESS SERVICE REQUESTED

Non-Profit Org.
U.S. Postage
PAID
Permit N. 11

About CKEOC

The Educational Opportunity Center is 100% funded by the U.S. Department of Education and is one of the TRiO programs. TRiO began with Economic Opportunity Act of 1964, in response to the administration's War on Poverty.

TRiO programs include eight outreach and support programs targeted to help disadvantaged students progress from middle school to post-baccalaureate programs.



33 Counties Served by CKEOC

Barton	Mitchell	Rice
Clay	Morris	Riley
Cloud	Ness	Rooks
Dickerson	Norton	Rush
Ellis	Osborne	Russell
Ellsworth	Ottawa	Saline
Geary	Pawnee	Smith
Graham	Phillips	Stafford
Jewell	Pottawatomie	Trego
Lincoln	Pratt	Wabaunsee
Marshall	Republic	Washington

