

# CKEOC Outstanding Participant: Jesse Loveland

March – May 2014

### Inside this issue:

CKEOC Outstanding Participant	2
Barton CC Info	3
BCC GED	4
Manufacturing Skills Certificate	5
National TRIO Day	6
GED Orientation Dates	7
About CKEOC	8

We are happy to have Jesse Loveland as one of our Participants of the Quarter. Jesse came to know about CKEOC through the Adult Learning Center GED program at Barton Community College. He learned about the many different opportunities he could explore through the various workshops provided by CKEOC to the GED program.

Jesse received his GED in July of 2012, and immediately seized the opportunity to take advantage of CKEOC’s free services. He was diligent about furthering his education and frequently visited with his CKEOC Advisor. Jesse was provided assistance with enrolling at BCC, went on a campus visit, completed assessment testing, and received help with the financial aid process. After reflecting on his life experiences, he knew that he wanted to pursue a degree in Social Work and entered Barton Community College in the Fall of 2012. He stated that he really loves attending BCC because of its size—not too big or too small—and feels that students receive more individual assistance. Upon completion of his Associates degree at BCC, Jesse plans to transfer to Fort Hays State University where he will work on achieving a Bachelor’s degree in Social Work.



Jesse’s ultimate goal is to someday open a YRC2 (a group home) for troubled teens, and is also very interested in starting his own business producing CD’s. He said his best supporter and greatest inspiration has been his Foster Mom, Elaine. In his spare time he likes to go camping, and spending time with his son and girlfriend.

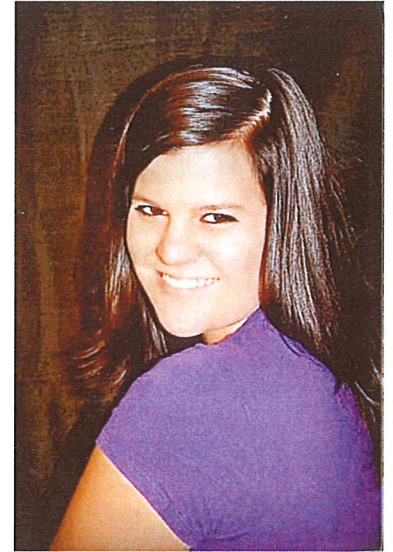
When asked what he would like to say about CKEOC, Jesse stated “they are polite, love their jobs and helping students go to school, and most of all they are really fun to work with.” He also said, “if there is a question they can’t answer, they won’t quit until they find someone who does.”



## CKEOC Outstanding Participant:

### Jackie Neidhardt

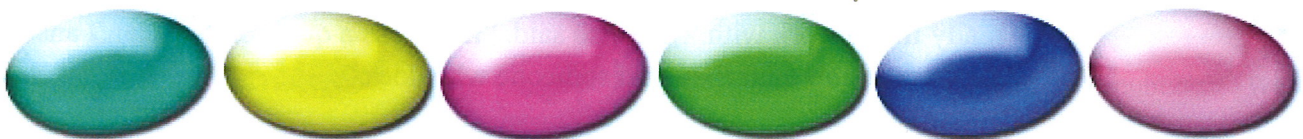
One of our outstanding participants of the quarter is Jackie Neidhardt from Fort Riley, KS. Jackie hails from Saint Paris, Ohio where she graduated from Graham High School. She came to Fort Riley when her husband received orders. When she arrived, she started taking classes at Barton Community College's Fort Riley campus. She has since completed her Associate's of Science degree and plans on transferring to Washburn University to study radiologic technology and medical imaging.



Jackie describes her college experience as being "very positive." Through a combination of taking LSEC classes that are funded through the state, and Pell Grant, she has been able to complete her degree with no debt. She also states that "her teachers are great" and have helped her "maintain a high GPA." Jackie's college experience at Barton Community College has prepared her for her next step at Washburn University. After she completes her education, Jackie aspires to obtain employment in the medical field where she can assist people.

Jackie lives in Junction City with her husband and her dog, Jazzie. While in school she has held a few part time jobs, but has mostly been able to focus her time on her studies. In her spare time she enjoys relaxing with her husband, watching movies, reading books, and listening to music.

Jackie first heard about CKEOC when she was told about it by a classmate and again when she attended a presentation during student success class. Following the presentation, she made an appointment with the Junction City Coordinator to learn more about financial aid options. Jackie has since taken full advantage of the services, receiving help with "scholarships, choosing classes, and financial aid." She adds that CKEOC assisted her to "fill out my FAFSA with confidence as well." During her participation in CKEOC Jackie has referred several of her fellow classmates and states "I would recommend CKEOC to any student that needs information or help with financial aid".





## SPRING 2014

### MAIN CAMPUS PLANNING CALENDAR

January 2—May 29

Summer Enrollment Begins

March 8

First Day of 2nd 8-Week Session

March 17 – 21

Spring Break—Offices Closed

April 9

Last Day to Drop with Courses Recorded

As “W” on Transcript

April 15

Advisement Day for Fall Registration

No Day Classes

April 18—21

Easter Break—Campus Closed

May 12-15

Finals

May 16

Commencement

May 29

Last Day to Enroll in Summer Courses

Payment Due

### FORT RILEY PLANNING CALENDAR

LSEC CYCLE 4 APRIL 10—MAY 22

FEBRUARY 18

Active Duty Military Registration Begins

MARCH 3

Open Enrollment Begins

APRIL 10

Last Day to Enroll (All)

\*LSEC Cycle 4 Classes Begin\*

### COLLEGE PROGRAM CYCLE 3 MARCH 24—MAY 17

JANUARY 20

Open Registration Begins

MARCH 24

Last Day to Enroll

\*College Program Classes Begins\*

### EOC STAFF AVAILABLE TO ASSIST YOU WITH QUESTIONS & EOC SERVICES

Liz Klima – EOC Advisor



Ray Kruse Coordinator/Advisor

**CENTRAL KANSAS EDUCATIONAL OPPORTUNITY CENTER IS PROUD TO BE A PART OF BARTON COMMUNITY COLLEGE WHO SUPPORTS OUR PROGRAM AND SERVES AS OUR HOST INSTITUTION**

#### NON-DISCRIMINATION NOTICE:

**Barton Community College is an equal opportunity provider and employer. Visit [equal.bartonccc.edu](http://equal.bartonccc.edu) for more information.**

## What's New at BCC GED Program

Whether you want to attend morning or evening classes, Barton Community College Adult Learning Center GED program offers this option. The morning classes are held on Monday, Tuesday and Thursday mornings from 9:00 am till 12:00 (noon) and the evening classes are held on Monday and Thursday evenings from 5:30 pm till 8:30 pm and Saturday mornings from 8:30 am till 11:30 am. There is a \$50.00 materials fee, and the cost of the official GED test is \$30.00 a module, total cost for the test is \$120.00. To help you along in this process of obtaining your GED, there are two Instructional Specialists to guide you on your path of achieving your goal. They are Emily Cowles and Jared Grillot.

Emily is the morning Instructional Specialist for the GED program. Due to growing up in the military, she has had the opportunity to live in many different places. She graduated from Ramstein American High School in Germany. Upon returning to the United States she received a Bachelor's of Science in Food Science and Human Nutrition from the University of Maine, and her Masters of Science in Health Education from Mississippi University for Women. When asked why she wanted to teach in the GED program, she stated, "I enjoy teaching and helping others achieve their goals." The one thing she hopes she can instill in her students is self-confidence. Her husband, Parker, works for the athletic department at Barton Community College. They have a Jack Russell Terrier named Piper. In her free time, she enjoys running, biking, swimming, frisbee golf, and rock climbing. Emily also enjoys traveling, especially to Maine!



If Jared Grillot looks familiar to you, it is probably because you have seen him on the Barton Community College Campus. He first worked for BCC as Associate Faculty Instructor in Basic Algebra and Cultural Anthropology in 2010, and in the Spring of 2011 taught full time at the GED Center. After leaving in July, he returned to campus in the Fall of 2012 where he is currently working as a Math and Science Specialist for Student Support Services (SSS) Tutoring Lab. In addition he is the evening Instructional Specialist for the GED Program until a long term Instructional Specialist can be hired. He graduated from Parsons High School, then attended Kansas University where he attained a Bachelor's degree in Anthropology. He went on to receive a Post-Bachelor's Certificate in Teacher/Math Education from Eastern Michigan University. He has furthered his education with Newman University in ESL/Curriculum and Instruction Master's Program. When asked what is the one thing you hope to instill in your students, he stated, "Never be afraid to tell someone you need help." His wife, Tina, is employed at BCC as the Coordinator of Industrial Technology Programs. There is never a dull moment at the Grillot house with granddaughter, Alana, around. He enjoys watching Jayhawks Basketball games and likes to BBQ and travel.



If you or know someone that is interested in obtaining their GED, contact Teri Maloy at 620-786-7560.

*We are glad to be working with both Emily and Jared as partners to help students reach their educational goals.*





The Manufacturing Skills Certificate courses and competencies were established by business needs and validated by industry employers. The Manufacturing Skills Certificate incorporates the Kansas WORKReady! Certificate to established foundational skills in addition to technical skills training.

The Manufacturing Skills Certificate program provides students will the skills necessary to obtain an entry level manufacturing job. The certificate covers various manufacturing skills, such as basic mathematics, industry standards, and blueprint reading. Industries that employed the largest number of manufacturing technicians included: machinery manufacturing, transportation equipment manufacturing, petroleum - coal products manufacturing, repair and maintenance, and plastics - rubber products manufacturing.

Statistics provided by the Kansas Department of Labor indicate that manufacturing technicians jobs will increase by 10.6% between 2010 - 2020. The current median wage for someone entering the manufacturing technician profession is \$22.88 per hour.

# Manufacturing Skills Certificate

8 credit hours

## 2014 Schedule

February 24 - 28	Occupational Safety & Health (1 credit)
March 3 - 14	Applied Shop Mathematics I (2 credits)
March 24 - 28	Employability Skills (1 credit)
April 28 - May 9	Blueprint Reading & Geometric Dimensions and Tolerances (2 credits)
May 12 - 23	Precision Measurement & Quality Control (2 credits)

### Time and Location

5:30 - 9:00 pm; Monday - Friday  
Center for Adult Basic Education, 1025 Main, Great Bend

### Program Cost

\$728 - out of county residents  
\$672 - Barton County residents  
Textbooks are additional!

### WIA Approved

Contact Kristin Doze, Lead Employment Specialist  
KansasWorks- Great Bend  
Kristin@kansasworkforceone.org or (620) 793-5445

**For more information or to register, contact:**

Tina L Grillot, Coordinator of Industrial Technology Programs  
grillott@bartonccc.edu or (620) 792-9325

**BARTON**  
COMMUNITY COLLEGE



## 2014 National TRIO Day

Barton Community College Educational Opportunity Staff participated in Wichita State University's National Trio Day Town Hall Meeting February 13, 2014. The event featured Dr. Linda Byrd-Johnson, Deputy Assistant Secretary for Postsecondary Education, Department of Education. Several Trio staff and participants from across the state participated in an Question and Answer session with Dr. Byrd-Johnson. Dr. Byrd-Johnson enlightened the crowd with her approachable demeanor and honest responses to questions asked. Pictured are Dr. Byrd-Johnson in the middle along with BCC EOC staff.

## GED CLASS ORIENTATION

Contact information for GED class orientation:

BCC/Great Bend	March 24 – 27	620-793-5794
BCC/Fort Riley:	March 24 – 27	785-784-6066
Cloud CCC	March 24 -& 25	785-238-8010
	May 27 & 28	
Hays:	March 31	785-460-5486
Manhattan	March 24, 25 & 27	785-539-9009
	April 14 -17	
Salina	March 25 – 28	785-309-4660



## ACT Test Dates

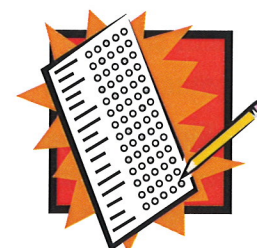
If you or someone you know are planning to attend a post-secondary college in the fall of 2014, it is time to mark your calendar for the following dates for the ACT test.

**Dates for ACT tests are:**

**April 12, 2014**

**June 14, 2014**

You may register online or by mail. The online address is [www.actstudent.org](http://www.actstudent.org) and you can request a registration packet from ACT.



## CKEOC Staff and Locations

**Great Bend**  
 1025 Main St  
 620-793-8164  
**Academic Advisor**  
 Mary Dino  
**Academic Advisor/Data Specialist**  
 Liz Klima

**Project Director**  
 Susie Burt

**Junction City**  
 1012 A West Sixth  
 785-238-5200  
**Coordinator/Academic Advisor**  
 Ray Kruse  
**Secretary/ Data Specialist**  
 Mary Shane



1025 Main Street  
Great Bend, KS 67530

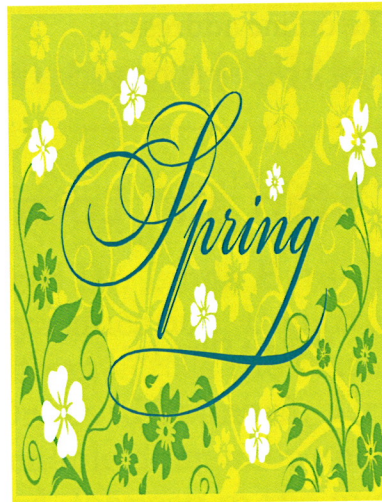
ADDRESS SERVICE REQUESTED

Non-Profit Org.  
U.S. Postage  
PAID  
Permit No. 11  
Great Bend, KS

## About CKEOC

The Educational Opportunity Center is 100% funded by the U.S. Department of Education and is one of the TRiO programs. TRiO began with Economic Opportunity Act of 1964, in response to the administration's War on Poverty.

TRiO programs include eight outreach and support programs targeted to help disadvantaged students progress from middle school to post-baccalaureate programs.



### 33 Counties Served by CKEOC

Barton	Mitchell	Rice
Clay	Morris	Riley
Cloud	Ness	Rooks
Dickerson	Norton	Rush
Ellis	Osborne	Russell
Ellsworth	Ottawa	Saline
Geary	Pawnee	Smith
Graham	Phillips	Stafford
Jewell	Pottawtomie	Trego
Lincoln	Pratt	Wabaunsee
Marshall	Republic	Washington