

Central Kansas Educational Opportunity Center



Barton Community College Adult Learning Center GED Program Graduation

Sept. – Nov. 2013

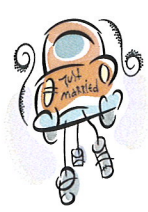
Inside this issue:

Participant of the Quarter:	2
Partners In Action:	3
Safe Routes Needed	3
GED Changes and Orientation Dates	4
ACT Test	5
CKEOC Staff and Locations	5
About CKEOC	6

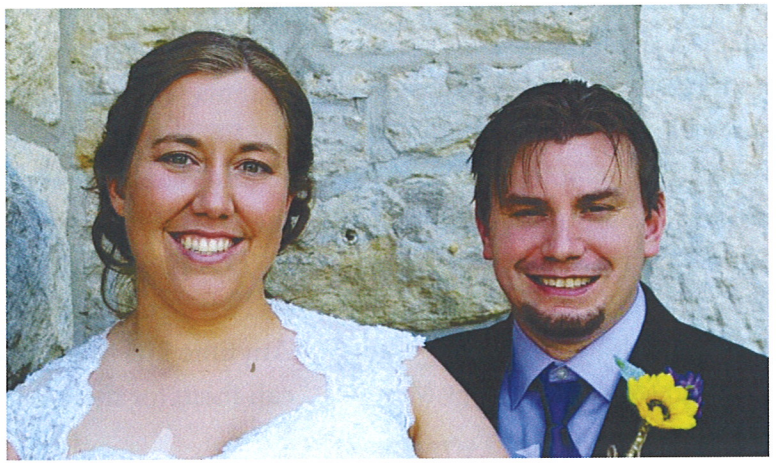


On June 13, a bright sunny afternoon the Barton Community College Student Union was buzzing with excitement. Seventeen GED students were honored at a graduation ceremony with a reception following. There were a total of 106 graduates in the GED program.

Congratulations



Congratulations to Raymond Kruse and Angela Davis on their recent marriage on August 3, 2013. Ray is the Coordinator/Academic Advisor at the Junction City Central Kansas Educational Opportunity Center. Angela is a math teacher with the Junction City Middle School.



Participant of the Quarter: Israel Mendoza

We are pleased to have Israel Mendoza as our Participant of the Quarter. Israel was born and raised in Great Bend, Kansas, and is a 2010 graduate of Great Bend High School. Upon graduation, from high school he entered the University of Kansas to pursue a degree in Nursing. So far, he has finished 3 years of general education and nursing classes. Israel applied for acceptance into the KU Medical Center School for Nursing and was recently accepted to begin in the Fall of 2013. The criteria that is used for acceptance into this school is based on leadership, community service, academic performance, and campus involvement. His hard work and dedication earned him a 3.6 GPA. So far, Israel's college experience has been very positive. He states, "Being a first generation college student, I get the whole feel of what it is like be a student at KU. It's a great place to go to school because it is more of a college town, rather than a big city." Israel's ultimate goal for choosing this career is to help people, and would eventually like to work in Emergency Room Medical Nursing. His passion is to work with children and hopefully be employed at Children's Mercy



Hospital in Kansas City, Denver or Dallas. For the next two years at KU Medical Center, Israel will be doing his clinical work at Kansas City hospitals, which will include St. Luke's, KU Medical Center, and Children's Mercy. He says he is looking forward to this new experience.

Israel was referred to CKEOC by Gui Burley, GBHS Migrant ESL Coordinator prior to his graduation in May of 2010. CKEOC assisted him and his parents with the completion of the FAFSA and financial aid requirements. When asked about the one thing he would say about CKEOC, he stated, "They were and are extremely helpful. Anytime I have questions, I can call them for their assistance."

Along with the support he gets from CKEOC, he states, "I am very thankful for the support I receive from my parents, family and friends. It means a lot."

Israel's parents, Armando and Irma, and two younger brothers, Alan and Julio reside in Great Bend. They are very proud of his accomplishments thus far and are supportive of his pursuit for an education in the medical field. In his spare time, he is an avid "Grey 's Anatomy" fan and likes to play volleyball and tennis. He was on the men's league while attending school at Lawrence. During the school year, Israel worked on campus at the Office of Administration at KU. He has spent his summers at home working for Recreation Center in Great Bend as he has done for the past 7 year.

Israel stated that he does not know what to expect with the move to KU Medical Center in Kansas City, but is looking forward to the challenge and knows it will entail long hours.

Upon the education of the people of this country, the fate of this country depends.

Benjamin Disraeli



Partners In Action: CKEOC and Kansas WorkforceONE WIA Youth Vision



CKEOC and WIA Youth Program have teamed up this summer to assist a participant enhance her skills through work experience. Work experiences help young people to acquire knowledge and skills needed to obtain employment. Kaitlyn Stoecklein is a participant of both the CKEOC and WIA Youth Vision programs and was placed to work in the Barton CC - CKEOC and Volunteers in Action offices through the summer through WIA funding. Kaitlyn became a participant of EOC by participating in a CKEOC orientation presentation at the Barton CC Adult Learning Center and sought further services through CKEOC that included financial aid assistance and college admissions to help her reach post-secondary goals. When asked the one thing she would say about CKEOC, she stated, "They have helped me to get on a better path for my daughter and myself." Kaitlyn is a first year student this fall at BCC majoring in pre-nursing and her ultimate goal is to become a radiologist and work in a clinical setting. She is a single mother of a daughter, Kailya. In her leisure time, she enjoys spending time with her daughter and working with horses.

The Workforce Investment Act (WIA) Youth Vision Program provides services to youth ages 14-21, with an emphasis on ages 16-21, in-school or out-of-school. The main focus of the Youth Program is to increase the focus on long term academic and occupational learning opportunities and provide comprehensive service strategies. Some of the services provided are summer employment opportunities directly linked to academic and occupational learning, paid and unpaid work experiences which includes job shadowing and internships, occupational skills training, and supportive services.

SAFE ROUTES NEEDED FOR AREA RESIDENTS

While traveling 281 Highway and NE Thirty Road near Great Bend, do you notice people riding bicycles or walking? Some of the folks you see are students that attend Barton CC and their only source of transportation is to ride a bike or walk. The young man in the picture is Jeremy, a Barton CC - CKEOC participant, and has walked to campus and home for nearly two years. When asked about his brave undertaking of walking to school, he advised that he is determined to complete his education whatever it takes. Jeremy is not alone. You may also see area residents that use the same types of transportation to utilize campus facilities and attend events. Many use streets and routes for exercise joining the national trend towards living healthier lifestyles. These brave folks many times brave fast moving traffic, construction obstacles, darkness, and inclement temperatures.

Signage may be one of many simple solutions to make Great Bend area streets and routes safer. Signs assist motorists, motorcyclists, bicyclists, walkers, runners become more aware of their surroundings and safety directives.

Kansas Health Institute, recently awarded grant funding to the new area established organization named Be Well Barton County. The group is dedicated to support area residents become aware of the positive affects of living healthier lifestyles. Coupled with that, the Be Well Barton County leadership group is also focused on initiating partnerships with residents, organizations, and local/area officials to work together as a team to advocate policies promoting safety and the establishment of infrastructure for pedestrians and cyclists of all ages. This include kids going to school, adults going for an evening walk and the die-hard bike rider zipping down a county road.



WITH THE NEW SCHOOL YEAR BEGINNING, PLEASE BE AWARE OF WALKERS AND BICYCLE RIDERS AND SUPPORT THE BE WELL BARTON COUNTY SAFE ROUTES.

Changes in GED Program

Just a reminder, for anyone who has been putting off earning their GED diploma until tomorrow – **it is tomorrow!** Starting January 1, 2014 the GED test series as of now will no longer be available. The cost of the test will increase from \$85.00 to \$120.00. Also, the new series will be completely on-line and there will not be an option for paper-based testing. It will be essential for GED students to become familiar with keyboarding skills to ensure they are comfortable with the computer based test. Lastly, the format of the test content will significantly change. Students who have not passed all parts of the current GED test before the end of the current GED test series by December 31, 2013; will have to start over when the new series begins in January 2014. For more information about orientations and class schedules, see the following lists:

Barton Community College BCC Adult Learning Center 1025 Main St.	October 7–11	Chris Lemon	620-793-5794
BartonCC/Fort Riley: ACS Building	October 7–11	Jesse Nicholas Ray Kruse CKEOC	785-784-6066 785-238-5200
Cloud County Community College Junction City Campus 631 Caroline Ave	October 14–15	Debbie Kearn	785-238-8010
Hays: FHSU Rarick Hall Room 238	October 14	Nance Munderloh	785-460-4663
Manhattan: 205 South 4th St. Upper Level	September 16–19 October 14–17	Vicki Fix-Turkowski	785-539-9009
Marysville: Lincoln Center 405 N. 4th St.	October 1	Karen Rengstorf	785-629-8085
Salina: Salina Area Technical College On the South Side of Campus 2620 Centennial Road	October 22-25	Kelly Mobray	785-309-4660

ESL Classes

ESL curriculum is designed to assist people progress through different levels of classes to meet their needs and allows them to advance to higher levels of learning. The ESL program provides an opportunity to acquire skills in basic educational areas, citizenship, technology, and the transition into the GED program. Day and evening classes are offered. Contact information for ESL classes:

Manhattan: September 16–19 October 21–24	785-539-9009	Salina: October 21–24	785-309-4660
---	--------------	-----------------------	--------------

Great Bend: Barton Community College is once again offering ESL classes. Contact Dee at 620-792-8221

ACT Exam Dates

If you or someone you know are planning to attend a post-secondary college in the fall of 2014, it is time to mark your calendar for the following dates for the ACT test. You may register online or by mail. The online address is www.actstudent.org and you can request a registration packet from ACT.

Dates and Locations for ACT test sites are:

September 21, 2013:

Great Bend: Barton Community College

Hays: Fort Hays State University and Hays High School

Manhattan: K-State and Manhattan High School

Salina: Kansas Wesleyan University and Salina High School South

October 26, 2013:

Great Bend: Barton Community College

Hays: Fort Hays State University and Hays High School

Manhattan: Manhattan High School

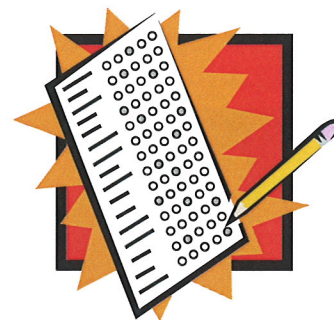
Salina: Kansas Wesleyan University, Salina High School South, and St. John's Military School

December 14, 2013:

Great Bend: Barton Community College

Hays: Fort Hays State University and Hays High School

Manhattan: K-State



CKEOC Staff and Locations

Great Bend

1025 Main St

620-793-8164

Academic Advisor

Mary Dino

Academic Advisor/Data

Specialist

Liz Klima

Project Director

Susie Burt

Junction City

1012 A West Sixth

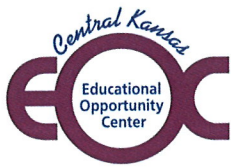
785-238-5200

Coordinator/Academic Advisor

Ray Kruse

Secretary/ Data Specialists

Mary Shane



1025 Main Street
Great Bend, KS 67530

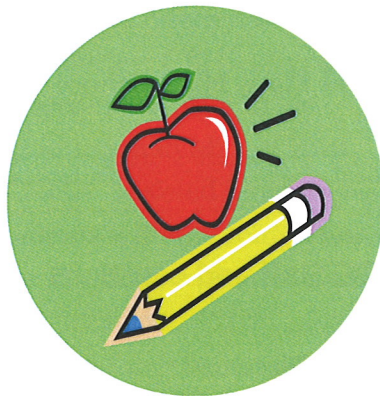
ADDRESS SERVICE REQUESTED

Non-Profit Org.
U.S. Postage
PAID
Permit No. 11
Great Bend, KS

About CKEOC

The Educational Opportunity Center is 100% funded by the U.S. Department of Education and is one of the TRiO programs. TRiO began with Economic Opportunity Act of 1964, in response to the administration's War on Poverty.

TRiO programs include eight outreach and support programs targeted to help disadvantaged students progress from middle school to post-baccalaureate programs.



33 Counties Served by CKEOC

Barton	Mitchell	Rice
Clay	Morris	Riley
Cloud	Ness	Rooks
Dickerson	Norton	Rush
Ellis	Osborne	Russell
Ellsworth	Ottawa	Saline
Geary	Pawnee	Smith
Graham	Phillips	Stafford
Jewell	Pottawatomie	Trego
Lincoln	Pratt	Wabaunsee
Marshall	Republic	Washington

