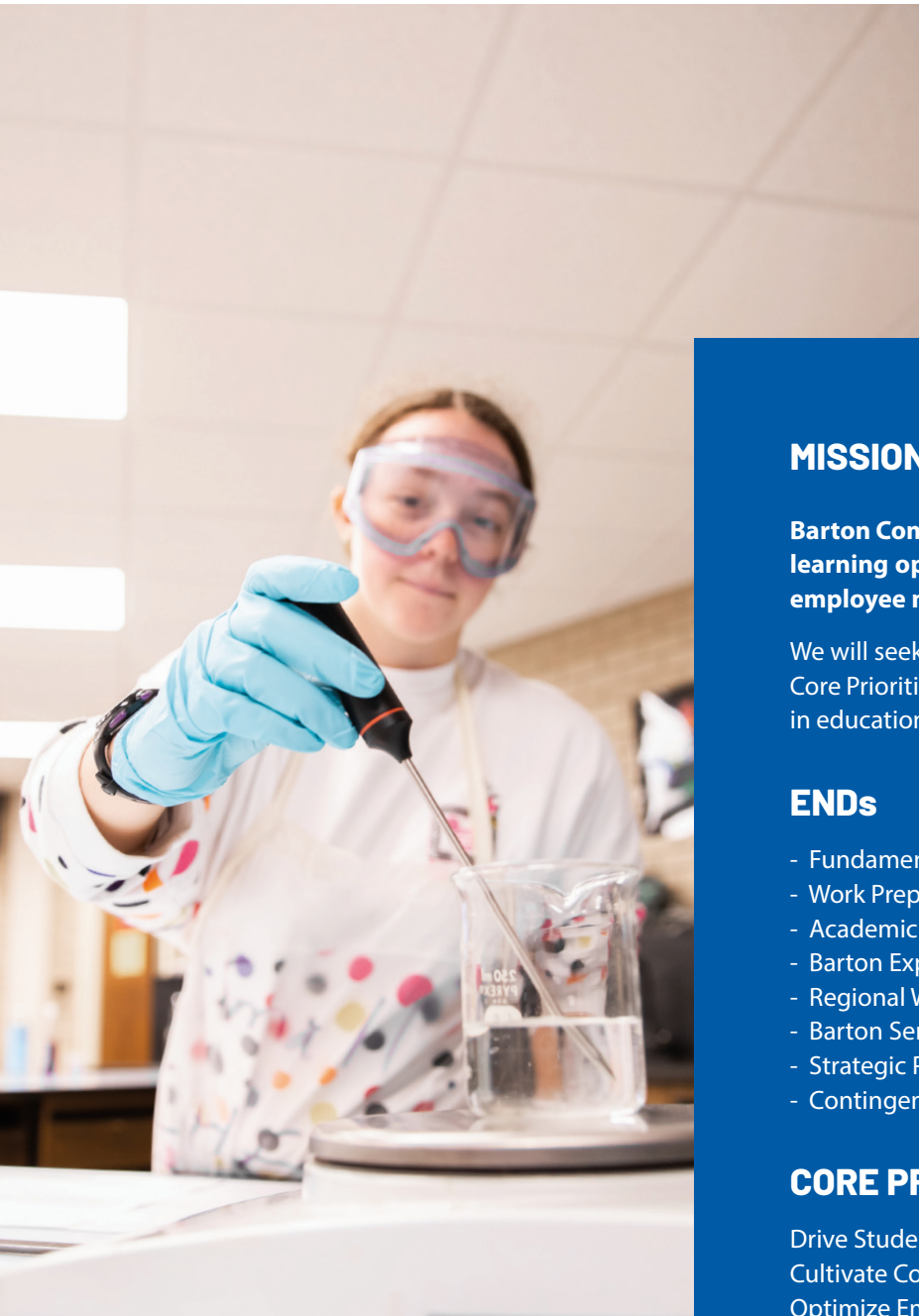




# REPORT 2022

The Barton Community College Board of Trustees is proud to present Report 2022, highlighting the college's progress in meeting the direction provided by your elected board.



## MISSION

**Barton Community College offers exceptional and affordable learning opportunities supporting student, community, and employee needs.**

We will seek to achieve our mission through eight ENDS and four Core Priorities (Values) that define our commitment to excellence in education.

## ENDS

- Fundamental Skills
- Work Preparedness
- Academic Advancement
- Barton Experience
- Regional Workforce Needs
- Barton Services and Regional Locations
- Strategic Planning
- Contingency Planning

## CORE PRIORITIES

Drive Student Success  
Cultivate Community Engagement  
Optimize Employee Experience  
Emphasize Institutional Effectiveness

**VISION: BARTON COMMUNITY COLLEGE WILL BE A LEADING EDUCATIONAL INSTITUTION, RECOGNIZED FOR BEING INNOVATIVE AND HAVING OUTSTANDING PEOPLE, PROGRAMS AND SERVICES.**

# REPORT 2022

## TABLE OF CONTENTS

04	BOARD OF TRUSTEES
05	LETTER FROM BOARD CHAIR MIKE JOHNSON
06	END 1: FUNDAMENTAL SKILLS
08	END 2: WORK PREPAREDNESS
10	END 5: REGIONAL WORKFORCE NEEDS
12	END 4: BARTON EXPERIENCE
14	END 3: ACADEMIC ADVANCEMENT
16	FOUNDATION UPDATE
18	END 6: BARTON SERVICES AND REGIONAL LOCATIONS
20	END 7: STRATEGIC PLANNING & END 8: CONTINGENCY PLANNING
21	SHAFFER GALLERY UPDATE
22	BARTON BY THE NUMBERS
24	ATHLETICS HIGHLIGHTS

# BOARD OF TRUSTEES

The Board is committed to transparency and accountability to the public. Visit [transparency.bartonccc.edu](https://transparency.bartonccc.edu) for data that paints a real-time picture of how the institution is doing.



**MIKE JOHNSON**  
*Great Bend*



**DON LEARNED**  
*Great Bend*



**JOHN MOSHIER**  
*Hoisington*



**CARL HELM**  
*Great Bend*



**GARY BURKE**  
*Great Bend*



**COLE SCHWARZ**  
*Great Bend*



President  
**DR. CARL R. HEILMAN**

"Barton Community College has emerged from the COVID-19 pandemic stronger than before. Our faculty is now savvy with numerous modes of curriculum delivery, and our courses and programs are more accessible than ever before. Our faculty and staff didn't miss a beat ensuring our students received the quality instruction and service they have come to expect. I applaud and deeply appreciate their efforts. The college is also well-positioned financially thanks to the stewardship of our Board of Trustees and careful budget management across the institution. Please take your time to peruse this document. If you have questions, please visit [report.bartonccc.edu](https://report.bartonccc.edu) or email [trustee@bartonccc.edu](mailto:trustee@bartonccc.edu)."

Dear constituents,

Thank you for taking the time to explore the 2022 Community Report. It is designed to bring you up to speed on the happenings at the college in the 2021-2022 academic year and the college's progress toward meeting its mission. If you have questions, I would encourage you to reach out to the Board of Trustees through the website at [trustees.bartonccc.edu](http://trustees.bartonccc.edu). Below are a few highlights from the last year:

### **PROGRAM UPDATE**

Barton is constantly reevaluating its programming to ensure the college meets the community's needs, and has added several new programs in the last few years, welding and scale technician. The most recent additions are carpentry, plumbing, network security specialist, and digital communication and content strategy. Several existing programs also added availability fully online, including medical assistant, criminal justice, computer science, and several business certificate programs.

### **HIGHER LEARNING COMMISSION (HLC) ACCREDITATION VISIT**

College employees are gearing up for an accreditation visit from the HLC this fall. Maintaining accreditation is a complicated process that requires the collective efforts of faculty and staff and detailed cataloguing of measures for accountability. The Board wishes to express our deepest gratitude for the care and attention given to this critical ongoing work.

### **NEW AG FACILITY COMING SOON**

A new multi-purpose agriculture training facility is coming thanks to a grant from the state and matching private donations. The new facility will allow the college to expand current agriculture offerings and add a new farm machinery mechanic program through its existing partnership with CASE New Holland.

### **BARTON NURSING SERVES PRATT AREA**

Barton's nursing program, through a mutually beneficial partnership with Pratt Community College, began offering nursing education on the Pratt campus this fall. Barton's nationally accredited, highly reputable program was sought out to fill a need for medical professionals in the Pratt area.

### **KANSAS PROMISE SCHOLARSHIP & EXCEL IN CTE**

The Kansas Promise Scholarship Act, covers the cost of education remaining after other financial aid is applied for certain career and technical programs. This is a tremendous opportunity for Kansans and their families, or an opportunity for a high school graduate to get started quickly in a high paying field with potentially no student debt. Excel in CTE covers the cost of qualifying career and technical education courses for Kansas high school students. More information can be found at [bartonccc.edu/promiseact](http://bartonccc.edu/promiseact) and [excelinCTE.bartonccc.edu](http://excelinCTE.bartonccc.edu).

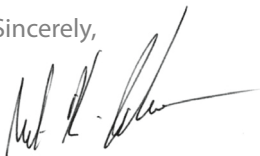
### **COVID-19**

The college remains vigilant against COVID-19 and its variants. Signs remain on doors to advise those who have not been vaccinated and cannot maintain social distancing to wear a mask. While students are regaining confidence in the prospect of attending college uninterrupted, many now expect various forms of virtual delivery of coursework.

### **FINANCIAL RESPONSIBILITY**

The Barton Board of Trustees is proud to enter its 15th year without requesting an increase in local taxes. Hard work, planning, and commitment on the part of the college faculty, staff, and administration allow us to keep the local tax burden as light as possible, which is a noted priority. Our Grandview Plaza, Fort Riley, and Leavenworth outreach sites also generate revenue to offset the mill levy, while providing affordable education opportunities to Soldiers and their families.

Sincerely,



Mike Johnson | Chairman | Barton Community College Board of Trustees

## END 1: FUNDAMENTAL SKILLS

Students will acquire the skills needed to be successful for the program they are in.

- Students will have the fundamental skills to succeed in the workplace.
- Students will have the fundamental skills to lead productive lives.
- Students will be provided remediation as needed.

### ASSESSMENT EXPLAINED

Assessment is a process of continuous improvement and is the driving force that can build a more effective course, a more meaningful degree and a more potent educational experience for Barton students. By identifying and focusing on the topics students are struggling with, faculty can make strategic improvements to their courses. Assessment of the Fundamental Outcomes serve as an indicator of the Fundamental Skills retained by our students and their ability to lead productive lives.

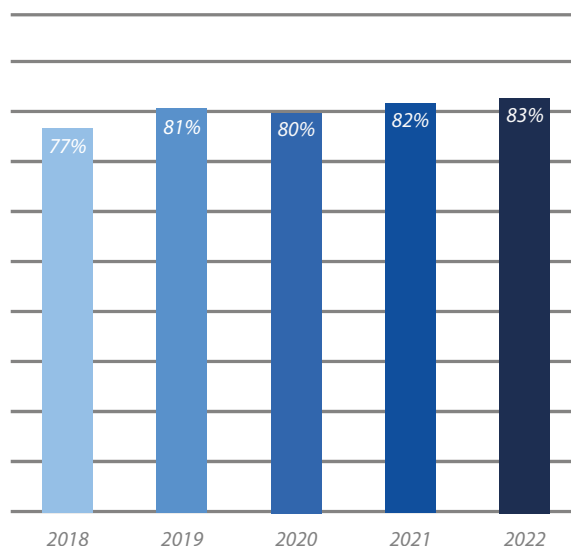
### FUNDAMENTAL OUTCOMES

#### 1. Critical Thinking (2022 featured outcome)

*Study a given subject critically, including processes to analyze and synthesize important parts of the subject, ask appropriate and useful questions about the study of this subject, and solve problems within the subject area.*

2. Life-Long Learning
3. Historical Perspective
4. Technological Perspective
5. Cultural Perspective

The graph to the right represents the percent of students who correctly answered specific questions designed to assess a student body’s grasp of a concept as it pertains to the Fundamental Outcome. A benchmark of 70% is used and as shown, the fundamental outcome is above this mark for 2022.



### ASSESSMENT TESTIMONIAL

“I plan to add a discussion board with the title, the customer is always right, and allow them to debate why this is or is not true while providing context and instruction for how a customer service representative represents a company and it is not always easy to just give a customer what they want.”

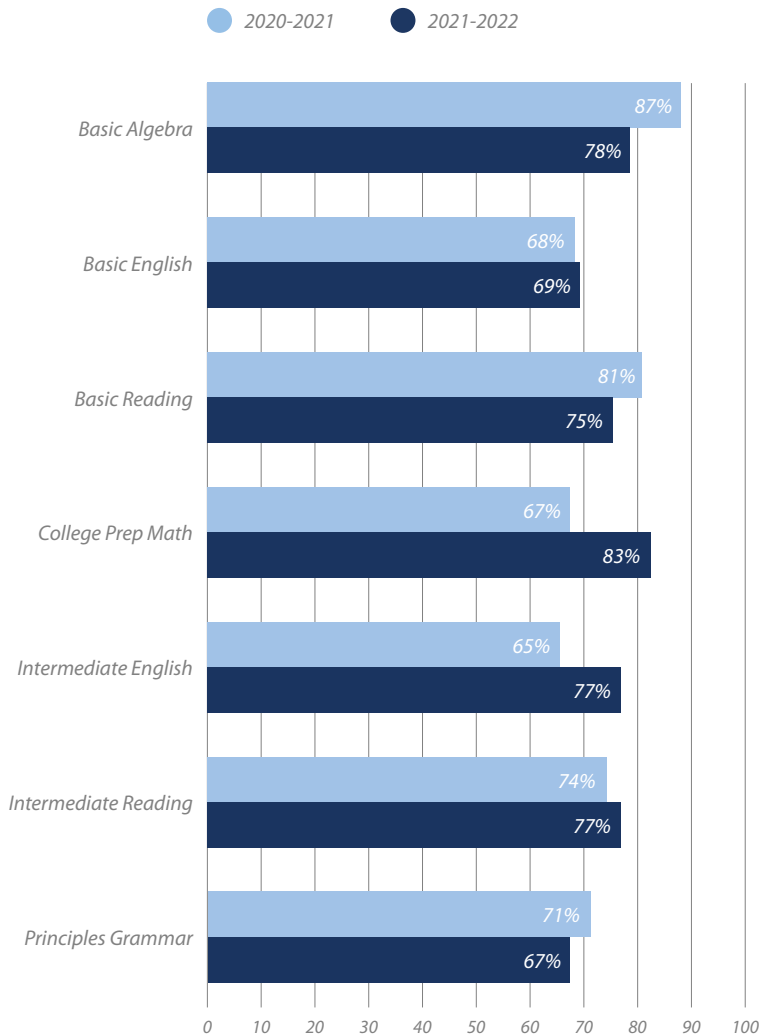
- Shanna Legleiter  
Adjunct Instructor; Business



Established in August 2021, the Academic Development Center (ADC) supports students in their development of academic skills and provides a space for supported study. Seminar topics include: Note Taking, Planning for Success, Study Groups, Preparing for Finals, Study Skills, Online Course Skills, and Academic Integrity.

## DEVELOPMENTAL COURSE SUCCESS RATES

An important indicator of student success is completion of coursework with a grade of C or better. The graph below shows successful course completion rates for a selection of developmental courses. On average, the successful course completion rate for developmental courses is 74%.



## ESSENTIAL SKILLS EXPLAINED

### SELF-MANAGEMENT SKILLS



- Dependability & Reliability
- Planning & Organization
- Integrity
- Initiative
- Stress Management

### INTERPERSONAL SKILLS

- Communication
- Adaptability
- Respect
- Teamwork
- Emotional Intelligence



### APPLIED SKILLS



- Writing
- Mathematics
- Science
- Critical Thinking
- Creativity

### WORKFORCE SKILLS

- Professionalism
- Workplace Fundamentals
- Problem Solving
- Decision Making
- Customer Service
- Technology



## HIGH SCHOOL EQUIVALENCY DEGREE

Barton offers a High School Equivalency degree program for individuals who did not complete high school. In fiscal year 2022, Barton issued 39 High School Equivalency Degrees with services in four locations: Downtown Great Bend, Larned Correctional Mental Health Facility and Ellsworth Correctional Facility. For more information see [adulted.bartonccc.edu](http://adulted.bartonccc.edu).



### Adult Education Success Story

Veronica Lara took her citizenship classes through Barton's Center for Adult Education 11 years ago and through that process, she learned that they also provide courses for adults wanting to continue their education. Fast forward to 2022 and she has her high school diploma and a plan for the future.

"I was working as a teacher assistant at USD 428 and I really liked the job but I needed a full-time job with benefits," she said. "I needed my high school diploma to qualify, so I got that this summer and now I have a full-time job with benefits working at USD 428 for the transportation department."

Lara's next steps are to take the CDL classes at Barton and become a bus driver for USD 428.

## END 2: WORK PREPAREDNESS

*Students will be prepared for success in the workplace.*

- Students will have the skills and knowledge required for successful entry into the workplace.
- Students will have the work ethics, discipline, and collaborative skills necessary to be successful in the workplace.
- Students will have the technical knowledge, skills and abilities necessary to maintain, advance, or change their employment or occupation.



### WORK PREPAREDNESS SUCCESS STORY

There is an old saying that “TV rots your brain,” but for 23-year-old Seth Gruber of Russell that was not the case. In fact, his penchant for crime shows lead to his career in law enforcement.

“Criminal Justice was always an area that interested me since I was young,” he said. “I was always fascinated by all the small details that investigators were able to uncover during various investigations you’d see on TV.”

Gruber found his way to law enforcement through Barton’s Emergency Medical Services program. He discovered that taking EMS courses would count towards his Criminal Justice degree, so he dove in and worked his way through Barton’s program including the real-life-scenario-packed “Field Ops Day” that the department holds each spring.

Gruber left Barton with his associate degree in Criminal Justice in 2018. However, he was still too young to enroll in the Kansas Highway Patrol’s (KHP) training program. Gruber turned 21 in late 2018 and enrolled in the KHP’s program. He was hired in June of 2019 and stationed in Western Kansas along I-70 in Logan County.

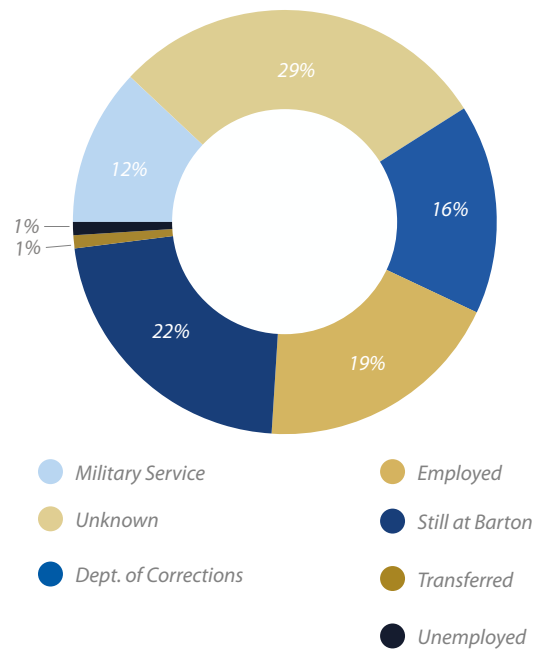
While there were numerous agencies Gruber could’ve worked for, choosing the KHP was a no-brainer.

“I chose to become a State Trooper as they were always viewed as the elite group in Kansas,” he said. “Also, there are no boundary or jurisdiction lines or restrictions on where they can go to help someone in need.”

*Brown’s experience is one of hundreds of success stories that illustrate Barton’s effectiveness at preparing students for the workforce. For more stories visit [news.bartonccc.edu](https://news.bartonccc.edu).*

### WHERE ARE OUR STUDENTS NOW?

The chart below illustrates the employment or education status of Barton graduates who completed a career technical education program in the 2020-21 academic year.



### 198 EXCEL IN CTE COURSES

Excel in CTE is a state program that allows high school students to take career & technical education courses with no tuition charged!

Barton has 198 courses that qualify for this program, including courses that can lead to gainful employment after one semester such as Certified Nurse Aid.





## 2021-22 PROGRAM COMPLETERS

Definition: Completers are certificate and/or degree graduates.

**Total Completers - 910**

See "Career Programs of Highest Interest" to the right for a list of programs with the most completers.



## INDUSTRY CERTIFICATION PASS RATES

Many programs include training to pass industry certifications to ensure graduates have the skills necessary to excel in the industry. The tables below reflect the rate at which our students are able to pass a third-party certification exam on the first attempt.

PASS RATES - TRADES & TECHNOLOGY	%
EARLY CHILDHOOD	100
CERTIPORT MOS (ACCESS)	100
CERTIPORT MOS (EXCEL)	100
IC3	82
EMS INSTRUCTOR/COORDINATOR	100
COMMERCIAL DRIVER'S LICENSE	80
WELDING SAFETY	100
WELDING BLUEPRINT	88
WELDING GTAW	94
WELDING CUTTING	96
WELDING GMAW	95
WELDING SMAW	93
PLUMBING	100
CARPENTRY	100

## CAREER PROGRAMS OF HIGHEST INTEREST

CAREER & TECHNICAL EDUCATION	TOTALS
WELDING	89
DIETARY MANAGER	48
CERTIFIED NURSES AIDE	70
EMT	29
OCCUPATIONAL SAFETY & HEALTH	48
CARPENTRY	15
PLUMBING	19
NURSING	24
MEDICAL LAB TECH	14
ADVANCED EMT	13
REGISTERED NURSING	24
AUTOMOTIVE TECHNOLOGY	9
NATURAL GAS	27

PASS RATES - HEALTHCARE	%
REGISTERED NURSE (RN)	88
PRACTICAL NURSING (PN)	97
CERTIFIED NURSE AIDE (CNA)	93
CERTIFIED MEDICATION AIDE (CMA)	85
MEDICAL LABORATORY TECHNICIAN (MLT)	50
EMT	64
ADVANCED EMT	88
PARAMEDIC	71
DIETARY MANAGER	79
PHARMACY TECHNICIAN	100
MEDICAL ASSISTANT	100

## END 5: REGIONAL WORKFORCE NEEDS

*The College will address regional workforce needs.*

- The College will develop strategies to identify and address on-going needs.
- The College will organize area resources in addressing needs.
- The College will build effective partnerships in addressing workforce needs.
- The College will be recognized as a leader in economic development.

Barton has been proactive and agile in addressing workforce needs as they arise with new programs. The following is a list of new programs launched in the last few years, including a couple of programs still in the approval pipeline:

### Coming Soon

Licensed Practical Nursing – Partnership with Pratt Community College (pending approval)  
 Welding Expansion – two additional certificates, Associate of Applied Science (pending approval)  
 Case New Holland Top Tech Level 1 (pending approval)

### New Programs in 2022

Carpentry  
 Plumbing  
 Network Security Specialist  
 Digital Communications and Content Strategy  
 Associate Degree in Nursing – Partnership with Pratt Community College

### Existing Programs that went Fully Online in 2022

Criminal Justice  
 Medical Assistant  
 Computer Science  
 Medical Laboratory Technician

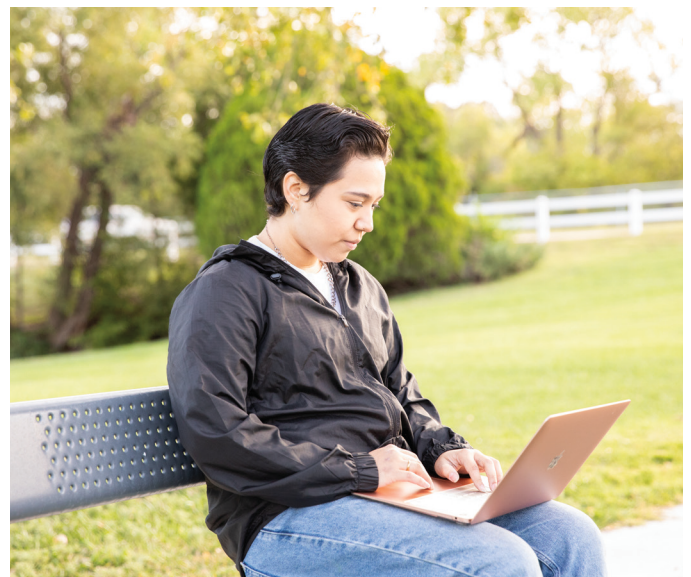
## NEW PROGRAM FEATURES

### Barton Network Security Program

With technology controlling almost every aspect of our lives, it's no surprise that the field of cyber security is growing quickly and Barton has responded to this trend by introducing its Network Security Program, which has started enrolling students for the fall 2022 semester and is available fully online. In addition to this exciting development, the Computer Science Program is now also available fully online.

Network Security Instructor Dr. Robert Davis has had a long career in multiple fields including military security, finance, and computer science as well as education in these fields. He said he is excited to give students the tools they need to keep information safe for everyone.

"It is imperative that students are provided with a toolbox of methods to reduce and eliminate the risk of cyber-attacks and prepare them for jobs in cybersecurity," he said. "This program will provide the student with information on how to achieve basic security objectives such as authentication, authorization, access control, confidentiality, data integrity and non-repudiation by using secure systems and design principles. Students will learn about major security breaches that have occurred over the years such as ones that compromise data



for large companies including Target, JPMorgan Chase, Yahoo, and Equifax and how to build countermeasures to defend against such attacks."

Davis said it's important to realize that breaches are not just computer and finance related. Utilities, energy, and computer systems controlling literally anything can be vulnerable and cause major problems.

### Barton and Pratt Nursing Program Partnership

Barton Community College and Pratt Community College (PCC) have teamed up to provide Nursing education for students in Pratt and the surrounding area.

Pratt Community College President Dr. Michael Calvert is pleased the partnership between PCC and Barton will restore the ADN (RN Nursing Program) curriculum back to the Pratt County area. "We are grateful the State Board saw the need for the training in our area, and we are grateful Barton Community College is willing to partner with us in that endeavor. We are also able to offer a mutual benefit for students that may wish to continue their training in Barton Community College programs upon completing their training at Pratt Community College."

Barton Community College Vice-President of Instruction Elaine Simmons appreciates the opportunity to expand education and training services in healthcare.



"Partnerships are an essential ingredient to higher education operations and provide an opportunity to expand education and training service to communities, employers and students. Barton looks forward to extending its Associate Degree in Nursing (RN) program in the Pratt and surrounding community. We appreciate the collaboration with Pratt Community College and the support extended from the healthcare industry. We celebrate the recent approval received from the Kansas State Board of Nursing to offer the program and look forward to a similar outcome with the Accreditation Commission for Education in Nursing (ACEN) as we seek program accreditation."

### WORKFORCE ADVISORY BOARDS

Barton partners with more than 700 businesses and organizations. Many partners serve on advisory boards, which offer guidance to Barton instructors and leaders to keep programs relevant and effective. Below is a list of Barton's workforce advisory boards.

- ADULT HEALTHCARE
- AGRICULTURE
- BUSINESS
- CARPENTRY
- CRIMINAL JUSTICE
- DIETARY MANAGER
- EARLY CHILDHOOD
- EMERGENCY MANAGEMENT / HOMELAND SECURITY
- EMERGENCY SERVICE EDUCATION
- FORT RILEY MILITARY PROGRAMS

- HAZARDOUS MATERIALS MANAGEMENT
- INFORMATION TECHNOLOGY
- MEDICAL SUPPORT PROGRAMS (MA, MC, MAT)
- MEDICAL LABORATORY TECHNICIAN
- NATURAL GAS
- NURSING
- OCCUPATIONAL SAFETY & HEALTH
- PHARMACY TECHNICIAN
- PLUMBING
- SCALES TECHNICIAN
- WELDING

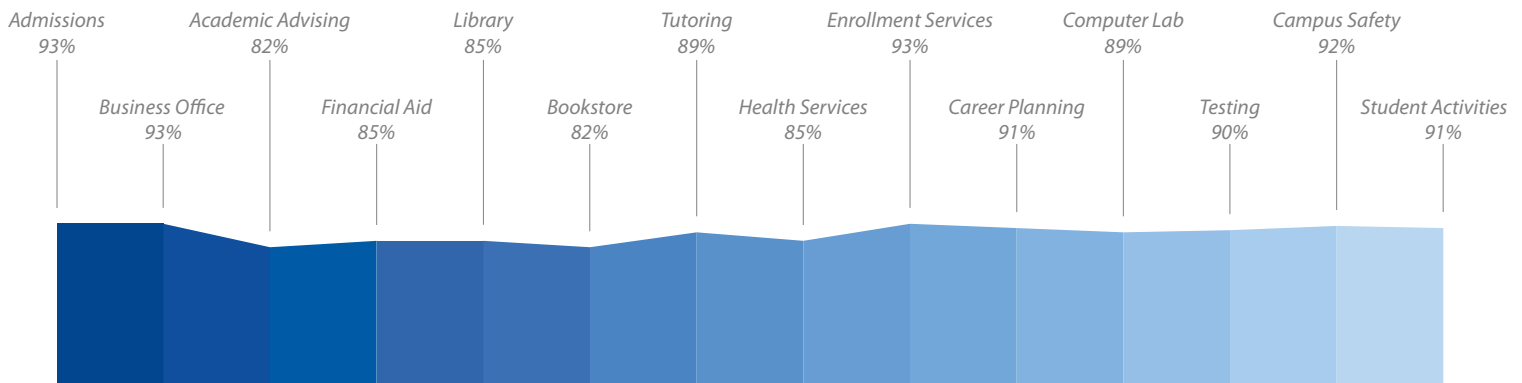
## END 4: BARTON EXPERIENCE

Student responses will reflect positively of their Barton experience.

- Student responses will be documented through student exit surveys and other report mechanisms.
- Student response will assess impact of faculty and staff.
- Student responses will reflect the diversity of the student body.

## GRADUATION SURVEY RESULTS FALL 2021

This graph represents the percentage of Barton graduates who rated their experience as adequate or better.



## BARTON DIFFERENCE AWARD

Barton employees are nominated by students for making a difference in their lives.



### PAULIA BAILEY

English Instructor – Barton County Campus

I came here with no editing skills. I was behind in English. Mrs. Bailey took the time to personally assist me in class. I then asked her to help me get to a higher level of writing and she has pushed me. She is an amazing teacher who cares about her students.

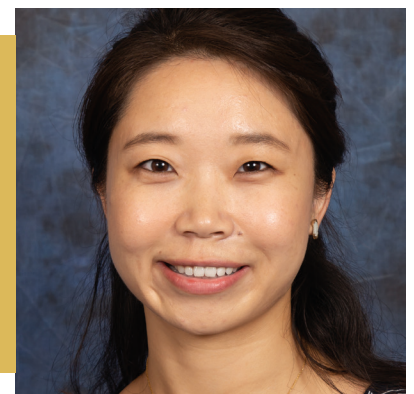
Nominated by: Matthew Neumann

### YUCHEN WANG-BOSWELL

Communications Instructor – Barton County Campus

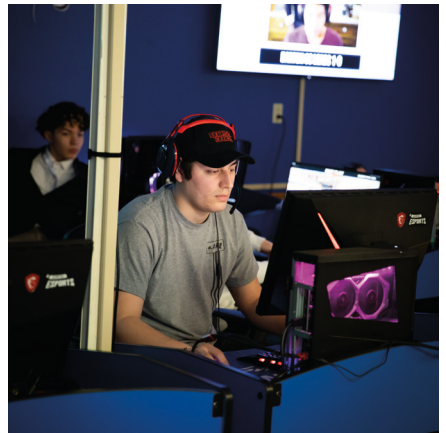
Went the extra mile to show that she was on my side and supported me throughout the class and after the class ended. She deserves recognition for her caring and passionate personality!

Nominated by: Brianna Russell





# BARTON EXPERIENCE AT A GLANCE



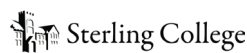
## END 3: ACADEMIC ADVANCEMENT

Students desiring academic advancement will be prepared for successful transfer to other colleges and universities.

- Students will have the academic prerequisites sufficient for successful transfer.
- Students will have appropriate knowledge of transfer requirements.
- Students will have adequate preparation to be successful after transfer to other colleges or universities.
- Students will be able to obtain Bachelor’s and advanced degrees through studies sponsored by Barton Community College.

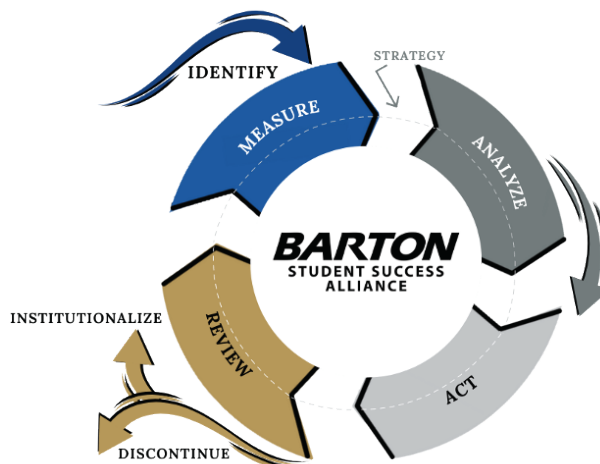
## TRANSFER AGREEMENT PARTNERSHIPS

Barton has established partnerships with several colleges and universities across the state and beyond, with dozens of possible degree pathways. For more information see [transfer.bartonccc.edu](https://transfer.bartonccc.edu).



## STUDENT SUCCESS ALLIANCE

The Student Success Alliance is a newly chartered, institutional team for Barton Community College. The Alliance will support the success of students at Barton Community College through the coordination of data-driven processes. For more information, visit: [bartonccc.edu/about/student-success](https://bartonccc.edu/about/student-success).





### TRANSFER TESTIMONIAL: Braylynn Anshutz

Braylynn Anshutz graduated from Barton in May of 2021 and transferred to Kansas State University where she is studying Secondary Education, Physical Education and Health. "As I am continuing into my Senior year at Kansas State University, I received the opportunity to reflect on the benefits of starting at Barton Community College. One reason I have excelled at KSU was because of Barton's academic resources. Barton provided me with resources that allowed me to succeed, such as the advising center making sure my courses were transfer equivalent and tutoring for those extra challenging days. These services gave me the opportunity to focus not only on my studies, but on my career moving forward after Barton. The reduction of stress by the reduced financial burden of my first two years of education was extremely beneficial as well. Unsurprisingly, the biggest part of my transfer success was due to the people. I have many people to thank for my overall success as they pushed me to become the best version of myself. The relationships I developed at Barton have given me confidence to move to the next level of college as these members were my biggest supporters. My time at Barton was full of positive memories that prepared me for a lifetime of opportunities at Kansas State University."

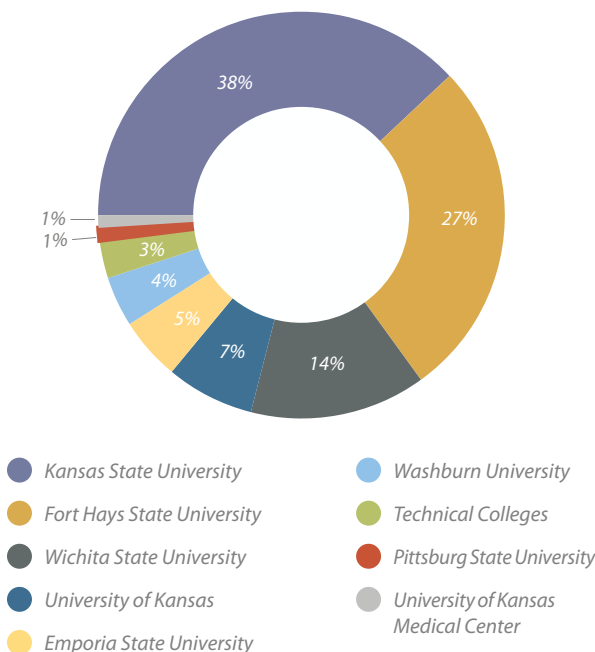


### TRANSFER TESTIMONIAL: Kaylee Reiser

Kaylee Reiser attended Barton Community College beginning in high school and continued into her freshman year, she is currently working towards a degree in Medical Laboratory Science at Kansas State University. "I attended Barton my first year of college and I think it was the best decision I could've made. Not only was I close to home, but I also saved a ton of money. I knew I wanted to attend a university at some point, but I thought it would be best to figure out what I was truly passionate about first. Thinking about college was stressful for me because I wasn't sure on what I wanted to major in, what classes to take, and how my classes would carry over to a university. While attending Barton, my advisor was able to help me select classes that would count towards a university degree and help make sure my credits would transfer. When the time came that I had to start thinking about my next steps, the Barton advisors and faculty were there to help with any questions I had. When I got to KSU, both my advisor and I were on the same page because of what Barton provided for me. My transition from Barton to K-State was smooth because of the great guidance and supportive faculty at Barton."

### WHERE ARE OUR STUDENTS NOW?

This pie graph represents the Kansas four-year institutions Barton students transferred to in the fall of 2020.



### HOW ARE OUR STUDENTS DOING?

This chart shows how Barton students who transferred to Kansas four-year institutions are performing relative to students who transferred from the other Kansas community colleges.

FOUR-YEAR KANSAS INSTITUTIONS	BARTON STUDENT AVERAGE GPA	OTHER KANSAS COMMUNITY COLLEGE AVERAGE GPA
EMPORIA STATE UNIVERSITY	3.27	3.80
FORT HAYS STATE UNIVERSITY	3.15	3.15
KANSAS STATE UNIVERSITY	3.37	3.35
PITTSBURG STATE UNIVERSITY	NO DATA	NO DATA
UNIVERSITY OF KANSAS	3.47	3.40
WASHBURN UNIVERSITY	2.93	3.31
WICHITA STATE UNIVERSITY	3.29	3.28

# FOUNDATION UPDATE

## MISSION

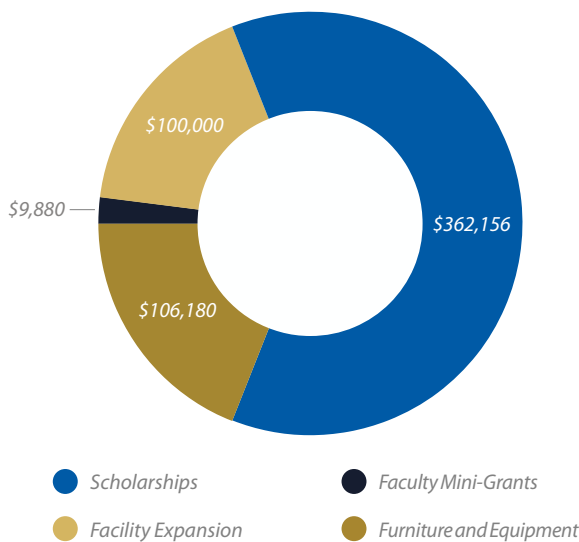
The Barton Community College Foundation exists to raise private sector funds by providing leadership and to prudently manage gifts to benefit educational opportunities and initiatives of the College.

## MISSION IN ACTION

We take our mission seriously - and we fulfill it with the generosity of donors from inside and outside our campuses. Donors come in all shapes and sizes and every dollar helps us do great things this year including awarding:

\$362,156.40 in scholarship funds to Barton students.

\$216,059.70 in program and facility enhancements across all Barton campuses.



## OLD BILL HONORARIUM

In 2022, the Foundation chose to honor a couple that has a long-standing family history of supporting Barton. The 2022 Old Bill Honorarium was dedicated in honor of Brad and Sarah Shirer. Sarah said working with the college foundation and observing the college grow over the years has been an amazing experience. "It's time, money and effort well spent because you see it reflected in the community and people of all ages and stages of life come here to enhance their abilities and improve their situation."



## DISTINGUISHED SERVICE AWARD

The Barton Community College Foundation honored Bill McKown as the 2022 recipient of the Distinguished Service Award (DSA) at the college's 52nd annual commencement. Bill's Brother, David McKown, accepted the award on his behalf. McKown was known for his infectious smile across the Barton County campus, taking classes, attending games, and supporting students, faculty, and staff with a kind word. A lover of the arts, McKown took numerous classes at Barton in the Fine Arts department and was awarded Best-in-Show at the Barton Student Exhibition Show for his graphic design work two years in a row.



## FOUNDATION ACTIVITIES

### 43rd Annual Big Benefit Auction

Over \$59,000 raised, including \$10,550 for the Old Bill Honorarium, recognizing Brad and Sarah Shirer

### 12th Annual Sporting Clay Shoot

208 shooters - \$14,902 raised for Faculty Mini Grants

### Total Assets of the Foundation as of June 30, 2022

\$10,223,598.68 in year-end assets

\$8,671,787.81 Restricted; \$1,551,810.87 Unrestricted

177 Dedicated Funds for Scholarships and/or Enhancements that donors can support

## PROJECTS

\$100,000 Matching Grant for Welding expansion

T-Building Lobby Furniture

Mattresses for Camp Aldrich Trails End Dormitory

Ceramics Supplies

Firearms for Criminal Justice Program

Admissions Lobby Furniture

Oral History Project

## FACULTY MINI-GRANTS

Early Childhood Development & Business Conferences & Field Experiences

Wigs for Nursing Mannequins

Ceramics Lab Update

Hematology Analyzers Supplies for MLT Program

Lighting Kits for Fine Arts

Saw-Stop Table Saw for Carpentry

Glo-Germ Kit for Nursing

Tools and Equipment for Plumbing

3-D Printer for Welding

Music Folders for Fine Arts

Animal Anatomy Models for Agriculture/Animal Science

Electrical Books for OSHA



## 2021-22 BARTON FOUNDATION BOARD OF DIRECTORS



Steve Webster



Rick Bealer  
Second Vice-Chair



Jolene Biggs  
First Vice-Chair



Mac Holman



Judy Fox



Tiffany Mayo  
Chair



Rob Munden



Dennis Sherman



Lori Werth  
Immediate Past Chair



Kevyn Soupiset



Kelly Spray



Jan Westfall



Paul Snapp

## AG COMPLEX

Barton Community College has been awarded a 1:1 matching grant from the Kansas Board of Regents, totaling \$1,843,594, to construct an Agriculture, Farm Machinery, and Transportation Technology Complex to co-locate multiple high-wage, high-demand certificate and degree programs.

The facility will be located on a donated 11 acres to the east of the Barton County campus and will include three classrooms, three dedicated shop spaces, CDL vehicle and equipment storage, corrals, instructor offices, loading dock, and a CDL examination testing area to provide licensure testing locally. Estimated cost for the project is \$3.7 million.



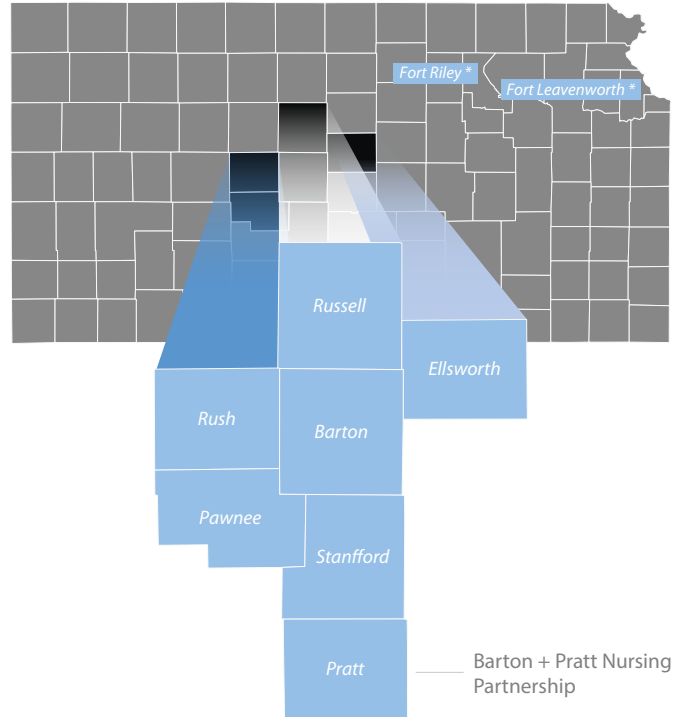
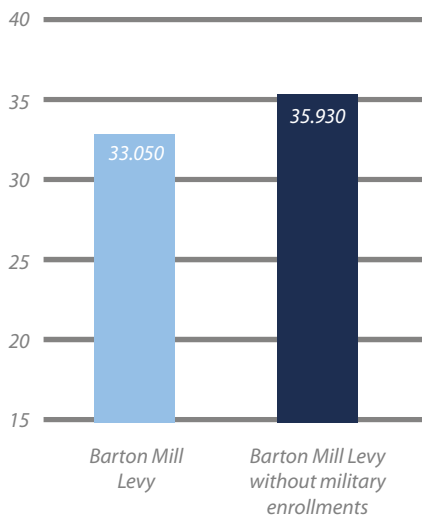
## END 6: BARTON SERVICES AND REGIONAL LOCATIONS

The College Mission will be supported by the strategic development of Barton services and regional locations.

- Services and locations will be compatible to the institutional mission of the College.
- Services and locations will be in accordance to available resources.
- Services and locations will maximize revenues and minimize expenses.
- Services and locations will generate revenue to meet their locational expenses.
- Services and locations will complement growth of student learning services.

### THE VALUE OF BARTON'S OUTREACH ACTIVITIES

The left bar below shows the mill levy (rate of taxation). The right bar shows what the mill levy would be without the Fort Riley, Grandview Plaza, Fort Leavenworth and online military enrollments.



\*Agreement with military to offer classes and training at Fort Riley and Fort Leavenworth.

### BARTON TRAINING ANYWHERE

The Hazardous Waste Worker Training Program (HWWTP-Military Initiative) is a major component of National Institute of Environmental Health Sciences, NIEHS Worker Training Program (WTP). The National Partnership for Environmental Technology Education, NPETE is the awardee for the grant with Barton Community College being a sub-awardee. The HWWTP – Military Initiative, through its awardees, provides model occupational safety and health training for active duty, family members, Guard/Reserve and Veterans.





## STUDENT REINVENTS LIFE WITH SCALE TECHNICIAN PROGRAM

Richard Mason, 50, of Great Bend received his Scale Technician Certificate on the same day his daughter Sydney received her associate degree at Barton's commencement ceremony in May. They're both ready for the next chapter of their lives and get to embark on their respective journeys almost simultaneously.

While Sydney is heading to Wichita State University, Richard is primed to make over \$10 more an hour than he was making at his last job after earning his certificate in just one semester. He has already been asked to learn additional skills that will further increase his worth to his new employer, Metler-Toledo in Dodge City. Mason secured employment with the company before he even finished Barton's program.

Mason said there is a high demand in this field and that everywhere there is a scale whether it's a small grocery store scale or massive grain elevator scale a technician is needed to officially calibrate it. "If I had to talk to someone about doing what I did and being hesitant because they're older, I'd have to be totally encouraging to them and tell them it's well worth their time," he said. "I wish I would've done this a long time ago."

## BARTON IS A MEMBER OF THE GREAT PLAINS OSHA EDUCATION CENTER CONSORTIUM

The Great Plains OSHA Education Center (GPOEC) Consortium consist of Barton Community College, Metropolitan Community College (Lead Organization) and Saint Louis University. GPOEC provides OSHA training to Region VII, consisting of Nebraska, Iowa, Missouri and Kansas. The GPOEC consortium is one of only 28 authorized OSHA education centers in the United States and Barton's Grandview Plaza campus is the only OSHA Training Institute Education Center (OTIEC) in the state of Kansas. This nationally recognized designation enables Barton to provide OSHA training throughout the state of Kansas and Region VII.



# OSHA

Training Institute  
Education Centers®

Great Plains  
OSHA Education Center

## END 7: STRATEGIC PLANNING

*The College mission will be supported by strategic planning emphasis.*

- The institutional mission of the college will be supported by strategic planning goals and objectives.
- Accreditation requirements of the Higher Learning Commission will be satisfied through the development and implementation of strategic planning goals and objectives.
- Kansas Board of Regents policies and mission will be satisfied through the development and implementation of strategic planning goals and objectives.
- Strategic planning goals and objectives shall be measurable in order to demonstrate their effectiveness and to provide accountability to the public.

## END 8: CONTINGENCY PLANNING

In fulfilling its educational mission, Barton Community College attempts to make optimal use of its resources. Optimum utilization may call for the adjustment of operational procedures such as a reduction or discontinuance of a program or service; reallocation of resources as a result of changing educational priorities; shifting enrollment patterns; lack of funds; and/or the requirements of legally imposed mandates.

The President will make these recommendations to the Board of Trustees based on the college’s mission of emphasizing academic, vocational-technical, and cultural enrichment learning opportunities; coupled with the need for maintaining program integrity, financial viability, and responsiveness to internal and external college constituencies.

There have been several updates with both the content and visual representation of our strategic and contingency planning process:

The updated mission has a new information booklet and logo.



The planning process has been converted from a flow chart into a graphic.



The full strategic plan has been consolidated into a single report. Content links include: Framework, Vision, Mission, Core Priorities, Strategic Goals, Key Performance Indicators (KPI), Metrics, Timeline, Monitoring Reports, Mission Alignment, Summary, Glossary, Appendix - Department Plans. For more information, visit: [bartonccc.edu/missionandvision](http://bartonccc.edu/missionandvision).

# SHAFER GALLERY UPDATE

## DIRECTOR'S NOTE

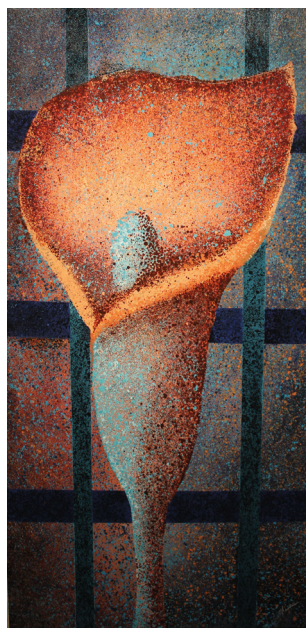
On the campus of Barton Community College the Gus and Eva Shafer Memorial Art Gallery, now more commonly referred to as the Shafer Gallery, has 8,000 square feet of exhibition space where, as its motto promises "The Old West Meets the Future". The Shafer Gallery offers its visitors monthly exhibitions by trending, regional and nationally known artists; and interactive activities for the family.

The Shafer Gallery was originally conceived in 1981 as a way to house and exhibit works from the Faerie Denham art collection that she and her husband Cedric had acquired over the years. It became the foundation of the current Shafer Gallery permanent collection which boasts over 900 works of fine art. It includes work from Shafer, Charles Rogers, Birger Sandzen, and a smattering of works by luminaries such as Dali, Bellows, Picasso, Audubon and many others.

Its 30 year history has shown the Shafer Gallery to be a significant cultural institution in central Kansas. Since the hiring of the first Gallery Director, Norma Ward, the Shafer Gallery has hosted thousands of visitors and organized hundreds of exhibitions. The gallery has been a gateway opening up the BCC campus to the greater Barton County community and the world. Collaboration is the key to the survival of a small art center and we have partnered with numerous state and private institutions and agencies.

We have tried to model the college's commitment to community engagement in our programming and vision and I believe we have become an important asset to the college as a welcoming accessible destination for quality aesthetic experiences. Constructing events and exhibitions that directly engage the increasing diversity and complexity of the Barton County community has become the major focus of the Shafer Gallery.

## EXHIBIT HIGHLIGHTS



Friends & Acquaintances: Galactic Lily by Hugo Gonzales



Behind the Metal Door: Hanging Wall Form by Darrell McGinnis

Virtual Vortex: Two Faced by Samantha Haney



Bart Art: The Maiden (Much Tribute) by Ruthie Webster



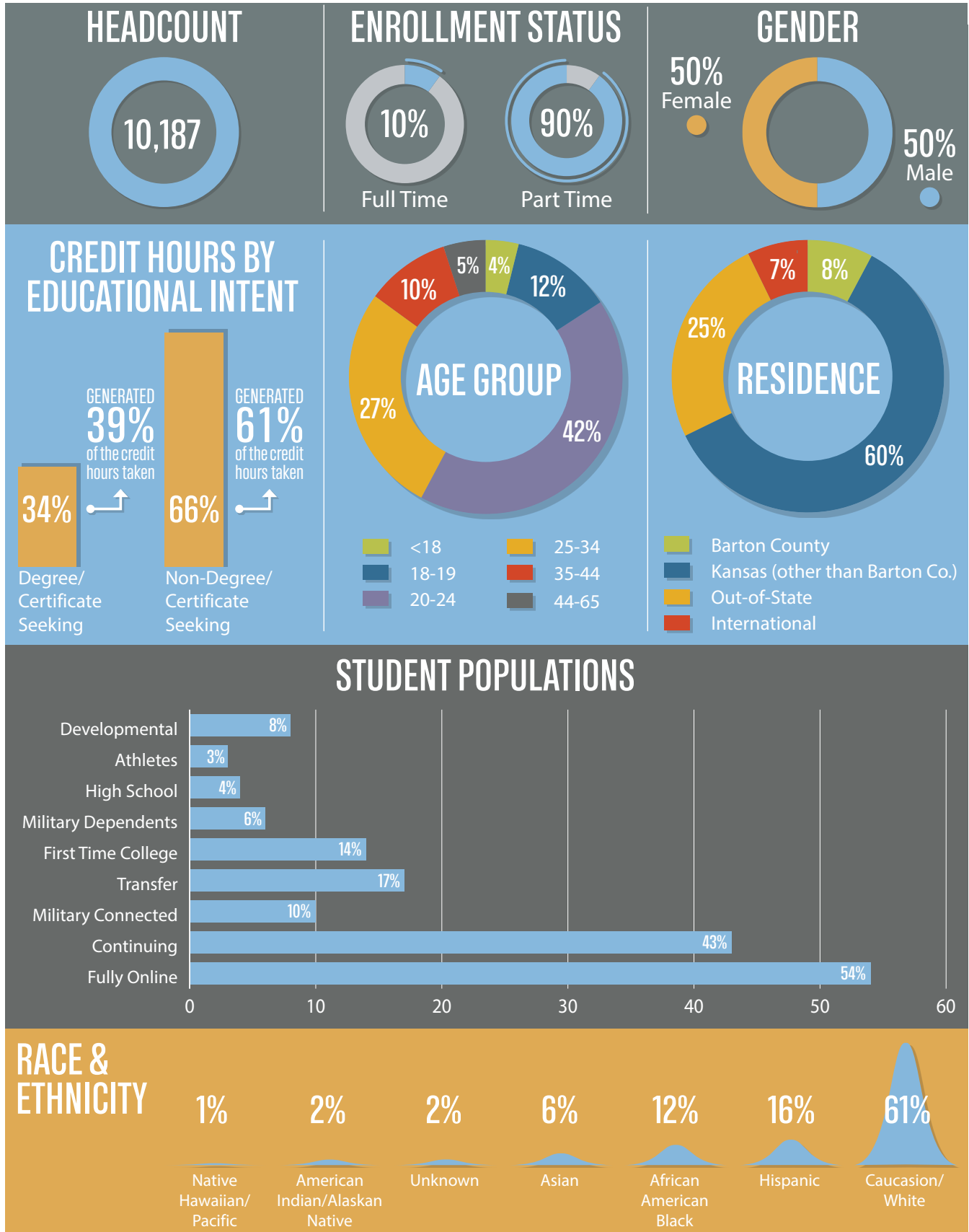
Momentum by Christine Mauersberger Hanging Center. Sister of Love & Passion: Emotional Fragment Seed Sister by Linda Ganstrom Center Pedestal. Veiled Completion (Side B) by Jayne Willoughby Right. A Perfect Com-motion by Elizabeth Brandt Left.

Palimpsest: Ponies Running Free by Cal Mahin

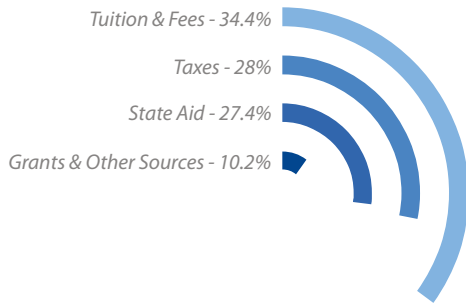


# BARTON BY THE NUMBERS

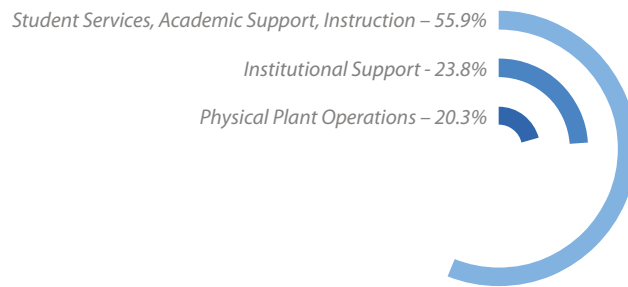
Academic year 2021-2022



### 2021-2022 REVENUE



### 2021-2022 EXPENDITURES



The charts above show Barton’s revenue sources and expenditures for Fiscal year 2022. Previously, Barton maintained each of the three primary revenue sources at about a third each of the total. Reduced support from state aid has rendered that model unsustainable. The Board of Trustees prioritizes keeping the local tax burden low, and prides itself on having maintained the same mill levy for 14 years, with a strong cash reserve. However, this means the college must rely more on tuition and fees to support operations.

<p><b>\$2,180,521</b></p> <p>FINANCIAL AID FOR BARTON COUNTY RESIDENTS</p>	<p>STATE AND FEDERAL GRANTS BROUGHT INTO BARTON COUNTY</p> <p><b>\$2,180,860</b></p>	<p><b>\$13,696,576</b></p> <p>SALARIES &amp; BENEFITS TO BARTON COUNTY RESIDENTS</p>
--	--	--

### BARTON'S STATE RANKING

Academic year 2021-2022

- Johnson - 24,755
- Barton - 10,187**
- Butler - 9,751
- Hutchinson - 7,537
- Kansas City Kansas - 6,729
- Highland - 3,812
- Cowley - 3,619
- Allen - 3,130
- Garden City - 2,763
- Dodge City - 2,340
- Cloud - 2,275
- Seward - 2,258
- Colby - 2,234
- Fort Scott - 2,181
- Neosho - 2,043
- Labette - 2,022
- Coffeyville - 1,829
- Pratt - 1,661
- Independence - 1,211

*\*Based on unduplicated headcount*

### LOCAL TAXPAYERS BENEFIT FROM BARTON

*\*Based on a model vetted and approved by the Docking Institute. Academic year 2021-2022.*

<p>THE COLLEGE'S AVERAGE ECONOMIC IMPACT BETWEEN 2019 AND 2021 IN BARTON COUNTY WAS</p> <p><b>\$20.6</b></p> <p><b>MILLION</b></p>	<p>OR A RETURN ON INVESTMENT OF ABOUT</p> <p><b>\$2.05</b></p> <p>FOR EVERY BARTON COUNTY TAX DOLLAR</p>
--	--

<p><b>212</b></p> <p>FULL-TIME EMPLOYEES LIVING IN BARTON COUNTY</p>	<p><b>109</b></p> <p>PART-TIME EMPLOYEES LIVING IN BARTON COUNTY</p>
--	--



## BARTON ATHLETICS HIGHLIGHTS

Barton Community College Athletics continues to show balanced excellence on and off the playing surface.

This past year the Cougars placed in the top three of the NATYCAA Daktronics Cup standings for the fifth consecutive year, recognizing Barton's achievements on the national stage behind 13 teams participating at its respective national championship tournament.

In the classroom, 21 Barton athletic teams were recognized by the NJCAA for its academic achievements. Three teams won the top Academic Team of the Year award led by Volleyball's third straight national title by holding an NJCAA leading 3.95 accumulated GPA, while Women's Basketball and Women's Tennis also claimed its respective team academic crown.

In addition to its team and department accomplishments, 45% of Barton student-athletes were awarded All-Academic honors. Barton's 126 student-athletes were among 9,912 across the NJCAA earning a spot on one of three All-Academic teams for the 2021-22 school year, overall carrying a 3.30 GPA to exceed the previous year's 3.25 GPA average.

