

**REGULAR MEETING OF THE
BOARD OF TRUSTEES
BARTON COUNTY COMMUNITY COLLEGE**

**May 18, 2004– 4:00 p.m.
U-219 (Upper Level of Student Union)**

AGENDA

1. Official Board Meetings	1
2. Call to Order	2
Comments from Chairman	
Public and/or Employee Comment	
Introduction of Guests	
Staff Report	
3. Action Items	3
Honorary Degree Recipient	
Extension of Military Leave	
Parking Lots and Road Repairs	
Roof Replacement – Technical Building Section 3	
Grant Application Requests	
➤ Public Access Defibrillation Demonstration Project	
➤ Rural Emergency Medical Service Training & Equipment Assistance Program	
➤ Regional Non-Traditional Centers in Kansas	
➤ Adult Education Program Grant	
4. KACCT/KBOR Report	13
5. Information/Discussion Items	13
Monitoring Reports	
June Board Meetings/Activities	
President’s Report of Monthly Activities	
6. Notices and Communications.....	28
Letter from Paul Dornberger of Hoisington	
Letter from the National Accrediting Agency for Clinical Laboratory Sciences	
Letter from Jennifer Pfortmiller	
7. Executive Session.....	36
8. Consent Agenda.....	37
Minutes of regular Board meeting held on April 20, 2004	
Minutes of special Board meeting held on April 29, 2004	
Personnel	
Claims and Financial Report	

Meeting of the Board of Trustees
Barton County Community College

May 18, 2004

OFFICIAL BOARD MEETINGS

Comments: All official Board meetings are open to the public except executive sessions, which are convened in compliance with State law. The Board of Trustees welcomes the attendance and participation of citizens in regular meetings and upon recognition by the Chairman, encourages questions or comments pertaining to items on the agenda. Persons having other matters to be brought before the Board should submit these matters in writing to the President at least 72 hours in advance of the meeting, in order that items may be placed on the agenda. In accordance with time requirements, the Chairman reserves the right to limit comments, both in content and length of presentation.

1. No comments will be heard on matters which are not on the agenda without the consent of the Board.
2. Persons wishing to speak will identify themselves to the Chairman and state whether or not they represent the opinion of a group.
3. Each person may speak no longer than five (5) minutes.
4. Presentations containing information or comments related to College personnel or students may be referred for consideration in executive sessions.
5. The Chairman reserves the right to stop the proceedings and poll the Board to determine if a speaker may continue.

Please Note: Barton County Community College Trustees routinely hold a monthly Board study session for the purpose of setting goals, Board development, and future planning; discussion is informal and no votes are taken. Both the regularly scheduled monthly Board meeting and the monthly study session are subject to the Kansas Open Meetings Act and are open to the public.

Information Only

Meeting of the Board of Trustees
Barton County Community College

May 18, 2004

CALL TO ORDER

COMMENTS FROM CHAIRMAN:

The Chairman will address the assembly.

PUBLIC AND/OR EMPLOYEE COMMENT:

No requests for public and/or employee comment have been received.

INTRODUCTION OF GUESTS:

The President or his designee will introduce guests, including new employees.

STAFF REPORT:

Jennifer Birney will present a staff report on the Silver Cougar Club.

ACTION ITEMS

Honorary Degree Recipient

Extension of Military Leave

Parking Lots and Road Repairs

Roof Replacement – Technical Building Section 3

Grant Application Requests

- Public Access Defibrillation Demonstration Project
- Rural Emergency Medical Service Training & Equipment Assistance Program
- Regional Non-Traditional Centers in Kansas
- Adult Education Program Grant

Meeting of the Board of Trustees
Barton County Community College

May 18, 2004

HONORARY DEGREE RECIPIENT

Detail: At its April 15, 2004 regular meeting, the Board approved the Honorary Degrees Policy. The purpose of the policy was to recognize individuals who have made outstanding achievements and contributions to the Institution, to the State of Kansas, to an academic discipline and/or to society.

Recommendation: In accordance with the Honorary Degrees Policy and supporting procedures, the Honorary Degree Committee met on May 11, 2004 and presented its recommendation to the President that former Barton student, Uday Singh, be awarded an Honorary Associates of Arts Degree. The Committee further recommended that the honorary degree be approved expeditiously so that it may be presented at the graduation ceremony at Fort Riley on June 10, 2004. The following is submitted as justification for the recognition.

Singh was an immigrant from India. When he immigrated to the United States, one of his major personal goals was to obtain a college education. However, because he was poor and an immigrant, he lacked the financial resources to attend college immediately. So, after investigating his options, Singh enlisted in the US Army in hopes of obtaining not only the education benefits the Army offers, but to obtain his US citizenship as well.

After his basic training, Singh was stationed at Fort Riley, where he began working towards his dream of obtaining a college education with Barton. Singh was a Barton student from the summer of 2001 until the spring of 2003. He completed 35 hours at Barton and received 4 more credits for military training – for a total of 39 credits towards his AA Degree. He was an exemplary student with a genuine thirst for knowledge as evidenced by his 3.77 GPA. Singh's education was interrupted in February 2003 when he was deployed to Iraq with his unit in support of Operation Iraqi Freedom.

Unfortunately, Singh was killed in action in Iraq in November 2003. Although Singh's dreams of a better life here on earth ended with his death, his dream of obtaining a college degree does not have to end. While it is not within our power to bring Singh back, it is within our power to honor Singh by awarding him posthumously the degree he so fervently desired in life. We believe it is not only fitting but also a moral imperative to award this young immigrant, who sacrificed his life for the United States, an honorary degree.

Action: Dean of Learning and Instruction

Meeting of the Board of Trustees
Barton County Community College

May 18, 2004

EXTENSION OF MILITARY LEAVE

Detail: At its regular meeting on February 17, 2004, the Trustees approved an extension of Jerry Treaster's military leave of absence through April 30, 2004. Our office has been notified that Mr. Treaster's military tour of active duty has been extended through June 30, 2004.

Recommendation: It is recommended that the Board of Trustees approve the extension of Jerry Treaster's military leave of absence through June 30, 2004 or until his date of release, if sooner than July 1.

Action: President

Meeting of the Board of Trustees
Barton County Community College

May 18, 2004

PARKING LOT AND ROAD REPAIRS

Detail: Many of the College parking lots and roads are in need of repair. A capital plan has been developed which will address these needs over a number of years. Requests for proposals were sent to five different contractors for the repair of the south Classroom/Union (#7) and the south F/A-Union (#8) parking lots. All contractors were asked to provide bids to patch the lots, apply a coal tar sealant and to stripe the two parking lots. In addition, the contractors were requested to provide an alternate slurry seal bid in lieu of the coal tar application. The following were the results of the requests for proposals:

	Coal Tar Seal	Slurry Seal
Inland Paving (Norwich):	No Proposal	\$24,152.75
Venture Corporation:	\$29,658.23	\$34,007.80
Stripe & Seal (Hays):	\$33,750.00	No Proposal
Parking Lot Maintenance (Wichita):	No Proposal	No Proposal
Paving Construction Inc. (Wichita):	No Proposal	No Proposal

Both the Inland Paving and the Stripe & Seal Proposals include an additional \$2,750 for concrete gutter repair. Venture included this amount in their proposal. The lower bid for the Slurry Seal method is within our estimated planning for the year.

Recommendation: Although the College gives preferential consideration to bids received from local contractors, it is noted that the bid received from the local vendor, Venture Corporation, is \$9,855.05 higher than the next lowest bid. The College recognizes the many donated contributions that Venture Corporation has provided over the years. This support is much appreciated and makes balancing a recommendation that is considerate of providing local preference whenever possible with continuing to be good stewards of taxpayer dollars most difficult. Because of the bid differential, it is recommended that the Board of Trustees accept the low proposal for Slurry Seal from Inland Paving, in the amount of \$24,152.75.

Action: Director of the Physical Plant

Meeting of the Board of Trustees
Barton County Community College

May 18, 2004

ROOF REPLACEMENT – TECHNICAL BUILDING SECTION 3

Detail: Section 3 of the Technical Building is in need of roof replacement. This is an original roof to the “shop addition” that was built in 1977. Requests for proposals were sent to four contractors. The results of the proposals were:

Washington Roofing (Great Bend):	\$53,048 (polyurethane roof)
Garden City Roofing:	\$53,750 (polyurethane roof)
High Plains Roofing (Hays):	\$59,980 (EPDM roof)
R&R Roofing (Great Bend):	No Proposal

The low bid is within the budget plan for the year.

Recommendation: It is recommended that the Board accept the low proposal from Washington Roofing in the amount of \$53,048.

Action: Director of the Physical Plant

Meeting of the Board of Trustees
Barton County Community College

May 18, 2004

GRANT APPLICATION REQUESTS

Detail: Attached for the Board's review are four grant application requests: (1) Public Access Defibrillation Demonstration Project (PADDP) in the funding range of \$300,000; (2) Rural Emergency Medical Service Training and Equipment Assistance Program in the funding range of \$120,000; (3) Regional Non-Traditional Centers in Kansas in the funding range of \$37,500; and (4) Adult Education Program in the funding range of \$140,000.

Recommendation: It is recommended that the Board authorize the President to approve applications for the Public Access Defibrillation Demonstration Project (PADDP), Rural Emergency Medical Service Training and Equipment Assistance Program, Regional Non-Traditional Centers in Kansas and Adult Education Program as presented. The Board may either act upon these grant application requests in one action or, if it prefers, the grants may be considered and acted upon independently from one another.

Action: Director of Grants

**BARTON COUNTY COMMUNITY COLLEGE
GRANT APPLICATION REQUEST
(Funding range over \$10,000)**

Grant	Public Access Defibrillation Demonstration Project (PADDP)
Funding Agency	HRSA
Summary	The Public Access Defibrillation Demonstration Project (PADDP) is designed to assist both urban and rural communities, businesses, and schools in increasing survivability from sudden cardiac arrest. This program provides funding for the purchase, placement, and training in the use of automated external defibrillators within Barton's service area.
Services	<ul style="list-style-type: none"> • Provide AED's to interested parties within our service area • Provide support in AED placement • Provide onsite AED training • Provide assistance in the development of Public Access AED protocols for local and state agencies • Promote a stronger relationship between industry and schools with our college and the local EMS agencies within our service area
Relationship to College Mission	The project will enable the College to provide business and industry within our service area with the needed equipment and skills to help victims of sudden cardiac arrest.
Target Population	All businesses, industries, and schools within our service area
Funding Range	\$300,000
Indirect Cost Reimbursement	None
Funding Period	3 Years
Institutional Obligation	25% Match
Cash	
In-Kind	
Personnel Required	
Existing	Emergency Services Education Coordinator – AHA Instructors
New	
Due Date	June 10 th , 2004

Presidential Review

I have reviewed this request and it is in concert with the mission and vision of Barton County Community College. I support the request and recommend that the Board of Trustees authorize the College to proceed with the preparation of the grant application, which is in excess of the funding range for which I am authorized to approve.

President's Signature

Date

**BARTON COUNTY COMMUNITY COLLEGE
GRANT APPLICATION REQUEST
(Funding range over \$10,000)**

Grant	Rural Emergency Medical Service Training & Equipment Assistance Program
Funding Agency	HRSA
Summary	This grant program provides funding for innovative solutions to continuing education, initial provider licensure, skill retention, and expanding scopes of practice to support paramedicine as a source of primary care in rural and frontier communities.
Services	<ul style="list-style-type: none"> • Will provide funding for expensive but needed equipment for EMS Education • Allows our students to work with equipment they most likely will encounter upon graduation from our program • Allows us to upgrade our current equipment that is well used and worn out
Relationship to College Mission	The project will enable the College to improve our educational services to learners while maintaining current local, state, and national expectations
Target Population	All state and local EMS agencies and Fire Departments – All students who in enroll in a CPR, ESE Continuing Education, EMT, EMT-Intermediate, First Responder, or Paramedic course
Funding Range	\$120,000
Indirect Cost Reimbursement	None
Funding Period	September 30 th , 2004 – August 31 st , 2007
Institutional Obligation	Mandatory 25% match (\$30,000)
Cash	
In-Kind	
Personnel Required	
Existing	Emergency Services Education Coordinator
New	
Due Date	June 10 th , 2004

Presidential Review

I have reviewed this request and it is in concert with the mission and vision of Barton County Community College. I support the request and recommend that the Board of Trustees authorize the College to proceed with the preparation of the grant application, which is in excess of the funding range for which I am authorized to approve.

President's Signature

Date

**BARTON COUNTY COMMUNITY COLLEGE
GRANT APPLICATION REQUEST
(Funding Range Over \$10,000)**

Grant	Regional Non-Traditional Centers In Kansas
Funding Agency	Kansas Board of Regents
Summary	The grant will establish the southwest Kansas component of a statewide system for technical assistance, resources and marketing strategies for non-traditional training programs and occupations.
Possible Services	<ul style="list-style-type: none"> • Development and dissemination of materials to promote non-traditional training programs and occupations. • Establishment of a regional advisory council to promote non-traditional training programs and occupations. • Provide technical assistance to target population.
Target Population	<ul style="list-style-type: none"> • Students in grades 7-14, counselors, instructors/teachers, administrators, employers, and the general public in 33 southwest Kansas counties.
Funding Range (Approximate)	\$37,500
Indirect Cost Reimbursement	0
Funding Period	07/01/04 – 06/30/05
Institutional Obligation	
Cash	\$1,442
In-Kind	Office Space, Furniture, Business Office and Accounting Support, Grant Monitoring, Transportation
Personnel Required	
Existing	NTO Coordinator
New	
Application Deadline	05/15/04

Presidential Review

I have reviewed this request and it is in concert with the mission and vision of Barton County Community College. I support the request and recommend that the Board of Trustees authorize the College to proceed with the preparation of the grant application, which is in excess of the funding range for which I am authorized to approve.

President's Signature

Date

**BARTON COUNTY COMMUNITY COLLEGE
GRANT APPLICATION REQUEST
(Funding range over \$10,000)**

Grant	Adult Education Program Grant
Funding Agency	Workforce Investment Act: Title II Adult Ed and Family Literacy
Summary	Kansas adult education is guided by a four-year state plan developed and approved by the Kansas Board of Regents and the US Department of Ed. The Kansas four-year state plan was developed cooperatively with adult education center directors who provide services to citizens in Kansas. The grant is funded through two-year sub-grants and centers maintain funding on the basis of performance on eight outcomes and on measures of quality indicators set by the state.
Possible Services	<ul style="list-style-type: none"> • Students, ages 16 and older, seeking a Kansas State High School Diploma (GED) • Students, ages 16 and older, seeking math and reading skills to improve employability • Students, ages 16 and older, desiring to learn English as a second language and/or gain citizenship skills
Target Population	<ul style="list-style-type: none"> • 18 and older Kansas residents without a high school diploma • 18 and older Kansas residents who don't speak English
Funding Range (Approximate)	\$140,000
Indirect Cost Reimbursement	NA
Funding Period	7/01/04 to 6/30/05
Institutional Obligation	
Cash	\$ 13,000 (Required by State)
In-Kind	\$ 25,000
Personnel Required	
Existing	7
New	
Application Deadline	May 22, 2004

Presidential Review

I have reviewed this request and it is in concert with the mission and vision of Barton County Community College. I support the request and recommend that the Board of Trustees authorize the College to proceed with the preparation of the grant application, which is in excess of the funding range for which I am authorized to approve.

President's Signature

Date

KACCT/KBOR REPORT

Mike Johnson and Dr. Law will update the Board concerning Kansas Association of Community College Trustees and Kansas Board of Regents activities.

INFORMATION/DISCUSSION ITEMS

Monitoring Reports
June Board Activities
President's Report of Monthly Activities

POLICY TYPE: ENDS MEASUREMENTS

POLICY TITLE: BARTON EXPERIENCE

Learning Organization Survey

Biennial: May 2004

Introduction & Methods:

Beginning in 1998, a survey of all full-time and fixed part-time employees was initiated on a biennial basis to monitor the extent to which the College continues to pursue its goal of becoming a learning organization. This report provides results of the first three years the survey was administered (1998, 2000 and 2002), combined with results from January 2004.

The survey instrument was adapted from one included in a publication on learning organizations (Peter Kline & Bernard Saunders, *Ten Steps to a Learning Organization*, Great Ocean Publishers, Arlington, VA, 1993). It consists of 36 survey items (statements) to which employees are asked to rate their level of agreement using a five-point Likert scale (1 = Not at all; 2 = To a slight extent; 3 = To a moderate extent; 4 = To a great extent; and, 5 = To a very great extent).

Survey results were analyzed for each of the 36 individual survey items, as well as for subsets of items that represent ten general measures, or characteristics, of learning organizations (see descriptions of the ten characteristics, further below). Average employee responses for each survey item and learning organization characteristic were compared among years for employees as a whole and for subsets of employees by employee group (Faculty/Coaches, President's Staff, and Other Staff [for some analyses, these latter two groups were combined into Staff, generally) and location (Main Campus and Ft. Riley). One-way Analysis of Variance (ANOVA) was used to test for differences among years, and if significant, Scheffe's multiple pair-wise comparison tests were used to determine the particular comparisons that contributed to the overall significance. Pair-wise comparisons include three 2-year comparisons (1998 to 2000, 2000 to 2002 and 2002 to 2004), two 4-year comparisons (1998 to 2002 and 2000 to 2004), and one 6-year comparison (1998 to 2004). One-way ANOVA also was used to evaluate differences among three groups (Faculty/Coaches, President's Staff, and Other Staff), and differences between campuses (Main Campus versus Ft. Riley) and between the two employee groups (Faculty/Coaches versus Staff) were tested by comparing means with *t*-tests. Finally, factorial ANOVA was used to test for the significance of any interaction between Employee Group and Campus Location within each of the four years the survey had been administered. All tests for significant differences were set at the *alpha* = 0.05 level of significance.

Results:

Survey Return Rates. Return rates were highest the first year the Learning Organization Survey was administered (overall return rate in 1998 was 73.6%), and they have hovered around 62% to 66% during the three subsequent years (2000, 2002 and 2004; see table, below). By employee group, response rates consistently have been highest for President's Staff (4-year average of almost 77%), followed next by Faculty/Coaches (69%) and then Other Staff (65%). Although 100% response rates would be ideal and would provide for comparisons without statistical testing (i.e., due to measurement of the entire population), return rates on the order of 65% to 75% generally are quite high for this kind of survey. Also, as related to the measurement of a majority of the population, the results of statistical tests used for comparisons in this report are

conservative, as no adjustments were made for high rates of sampling (i.e., there may exist more differences than reported herein).

Survey Return Rates:	Year				4-Year Averages
	1998	2000	2002	2004	
# surveys mailed	277	281	298	267	280.8
# surveys returned	204	186	185	175	187.5
Overall Return Rates	73.6%	66.2%	62.1%	65.5%	66.9%
Return Rates by Employee Group:					
Faculty/Coaches	73.2%	75.0%	61.8%	65.6%	68.9%
President's Staff	83.3%	81.8%	66.7%	75.0%	76.7%
Other Staff	73.2%	61.0%	62.0%	64.8%	65.3%

Highest and Lowest Rated Survey Items. All 36 survey items were ranked by average score (all employees at both campuses, combined) using 2004 results to identify those items that employees most recently rated highest and lowest.

The six highest ranked items included:

Learning is encouraged across all levels of the college: faculty, staff, students and management (Ranked #1 in 2004, average = 3.44; ranked #1 also in 2002, 2000 and 1998).

People feel free to speak their minds about what they have learned with no fear, threat or repercussion for disagreeing (#2 in 2004, average = 3.41; ranked also #2 in 2002, but ranked #12 in 2000 and #6 in 1998).

Open productive dialog is encouraged (#3 in 2004, average = 3.36; ranked also #3 in 2002 and 1998, but #2 in 2000).

There is a general feeling that it's always possible to find a better way to do something (#4 in 2004, average = 3.30; ranked also #4 in 2002 and 1998, but #3 in 2000).

Supervisors enable their employees to self-develop in order to learn how to improve their performance (#5 in 2004, average = 3.20; ranked #6 in 2002, #8 in 2000 and #11 in 1998).

Innovation is not only encouraged but is a way of doing things (#6 in 2004, average = 3.16; ranked one step higher [#5] in 2002, 2000 and 1998).

These items relate to areas in which employees feel the College is doing a relatively better job (strengths). The first of these relates to the College's support for learning in general; the second and third deal with employee comfort relative to openness of communication; the fourth and sixth potentially deal with attempts to experiment toward improvement; and, the fifth relates to support by supervisors for self-development by their supervisees.

The lowest six survey items (ranked in reverse) included:

There is sufficient time scheduled to step back from day-to-day operations and reflect on what is happening in the college (Ranked #36 in 2004, average = 2.08; also ranked lowest in 2000 and 1998, but next to lowest in 2002).

Cross-functional learning opportunities are expected and organized on a regular basis, so that people understand the functions of others whose jobs

are different, but of related importance (#35 in 2004, average = 2.20; ranked also #35 in 2000, but #34 in 2002 and #33 in 1998).

There are clear and specific expectations of each employee to receive a specified number of hours of training and education annually (#34 in 2004, average = 2.30; ranked also #34 in 2000, but #32 in 2002 and #35 in 1998).

Current management practices, operations, policies and procedures hinder the continued growth of college employees (#33 in 2004, average = 2.34; ranked slightly lower [#34 and #36] in 1998 and 2002, respectively, and slightly higher [#32] in 2000).

There is a formal, on-going education program to prepare supervisors in their roles as teachers, coaches, and leaders (#32 in 2004, average = 2.34; ranked also #32 in 1998, but #33 in both 2000 and 2002).

Workers at all levels are specifically directed towards relevant and valuable training and learning opportunities -- inside and outside the college (#31 in 2004, average = 2.50; ranked also #31 in 1998 and 2000, but slightly higher [#26] in 2002).

These items relate to areas for greater improvement by the College (weaknesses/opportunities). The first (ranked the lowest) relates to employees continuing to feel the demands in time/effort required for their jobs; the second, third, fifth and sixth relate to training; and the fourth may relate to a need to further streamline operations, policies, procedures and practices.

Changes Over Time. Between 1998 and 2000 there were significant differences (all decreases) for 2 of the 36 survey items for some segments of college employees (segments included one or more employee groups and/or one or both campuses), and 1 of the 2 decreases were college-wide (all employees at both campuses, combined). From 2000 to 2002, significant gains (increase in average values) were seen for 6 of the 36 survey items, and 5 of the 6 increases were college-wide. However, most recently (2002 to 2004), the trend reversed from the previous two-year period, and there were significant decreases for nearly one-third (11 of 36) of the survey items. Moreover, of the 11 survey items that decreased from 2002 to 2004, 9 were college-wide. Taking into account all 36 survey items simultaneously (i.e., overall average of the 36 survey items), there was no significant change from 1998 to 2000, no significant change from 2000 to 2002, but a significant decrease from 2002 to 2004.

Considering changes over longer periods of time (four-year and six-year changes), from 1998 to 2002 there were significant increases for six survey items (3 of the 6 were college-wide increases) and only one significant decrease, which was college-wide and which involved Survey Item #9, **"The quality of work life in our college is improving."** For the more recent four-year period (2000 to 2004), there were only two significant decreases (one of which was Item #9), but both of those decreases were significant only at the Ft. Riley campus (one was Item #9). In addition to those two significant decreases from 2000 to 2004, there was one significant increase (a college-wide increase). There was no significant change in the overall averages for either of these two four-year periods. Finally, for the six-year period (1998 to 2004), there was no significant change in the overall average, although there was a significant decrease for three individual survey items, all three involved college-wide decreases, and one of those items was Item #9. Therefore, considering changes that have occurred since 1998, it appears (1) the College currently is positioned about the same as it was in 1998; but, (2) one of a few exceptions to this general lack of long-term change has involved a continual decline in employee perception to Item #9 (related to "the quality of work life"), and, (3) any gains that occurred in the earlier part of

the 1998 to 2004 period largely have been ameliorated by declines in the past two to three years.

Differences Between Campuses and Among Employee Groups. Considering either all employees or particular employee groups, in 1998, there were significant differences between the two campuses for 3 of the 36 survey items. Also, for 2 of the 3 items, Ft. Riley had higher averages. By 2000, differences between the campuses seemed to have grown, as there were significant differences for 7 of the 36 survey items, and again Ft. Riley averages were higher for the majority (6 of 7) of those differences. In 2002, again there were significant differences for 7 of the 36 survey items, and again Ft. Riley was higher (for all 7). Moreover, the only significant difference between campuses using the overall average was in 2002, when Ft. Riley averaged higher than Main Campus. However, by 2004, there was a reversal in the status of the two campuses; significant differences existed for 5 of the 36 survey items between campuses, but it was Main Campus that averaged higher than Ft. Riley (for all 5).

Generally, the differences between or among employee groups has changed over the six-year period, which was characterized by a general divergence among groups up to 2002, followed by convergence in the past two years. For example, 5 survey items differed among groups in 1998 and 4 survey items differed among groups in 2000, but 8 survey items differed among groups in 2002; then, by 2004, only 2 survey items differed among employee groups. A large part of the divergence (as reflected by the figures in the next section) related to a departure of President's Staff from Other Staff and Faculty/Coaches up to 2002, followed by President's Staff declining somewhat to become more similar to the other two groups by 2004.

Learning Organization Characteristics. The remainder of this Monitoring Report presents results from the four years the survey was administered using average ratings for subsets of survey items related to ten areas, or characteristics, of Learning Organizations. The ten characteristics are interrelated and include:

- 1) "Assess Your Learning Culture" – composite of nine statements that attempted to capture a picture of the current reality of the organization covering an array of learning organization principles.
- 2) "Promote the Positive" – composite of ten statements centered on endeavors that change the attitudes of people in the college so they learn to think in a positive manner.
- 3) "Make the Workplace Safe for Thinking" – composite of 15 statements reflecting a climate that encourages employees to feel free about looking for better ways to do their job.
- 4) "Reward Risk-Taking" – composite of 13 statements relating to a climate that supports taking risks with an almost complete absence of fear of consequences, should failure occur.
- 5) "Help People Become Resources for Each Other" – composite of 14 statements providing insight to how employees view their collaborative working relationship with others.
- 6) "Put Learning Power to Work" – composite of 19 statements providing an assessment of the potential for everyone at the College to become "learners" for the betterment of the institution.
- 7) "Map Out the Vision" – composite of six statements indicating the extent to which employees are involved in creating a shared vision for the College.

- 8) "Bring the Vision to Life" – composite of nine statements that translate ideas and goals into actions towards doing things better.
- 9) "Connect the Systems" – composite of nine statements reflecting the degree of the "inter-connectedness" of various components of the campus community.
- 10) "Getting the Show on the Road" – composite of six statements focusing on "putting it all together" and assessing the ability of the institution to step out in new ways.

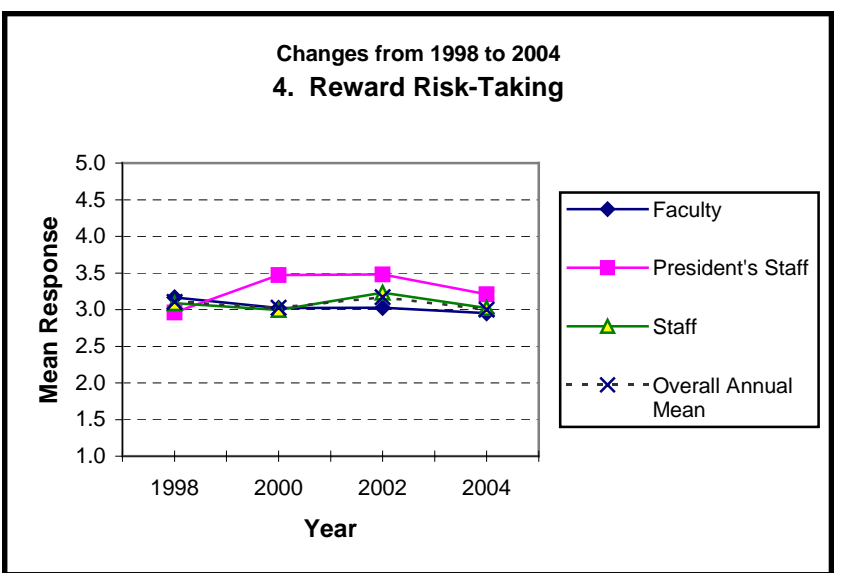
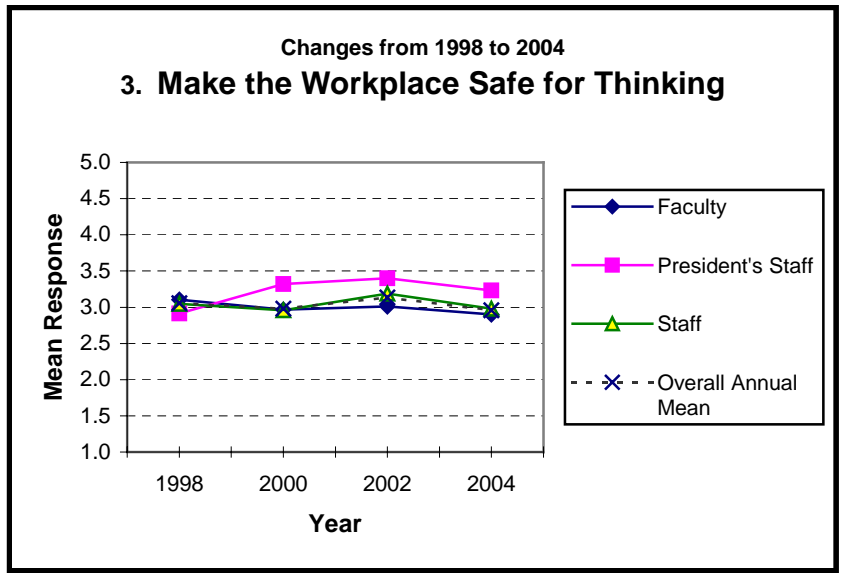
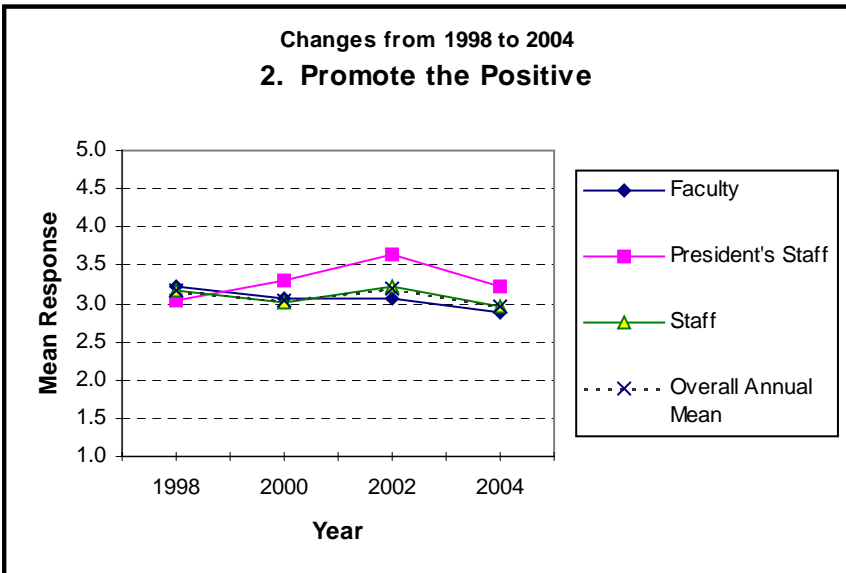
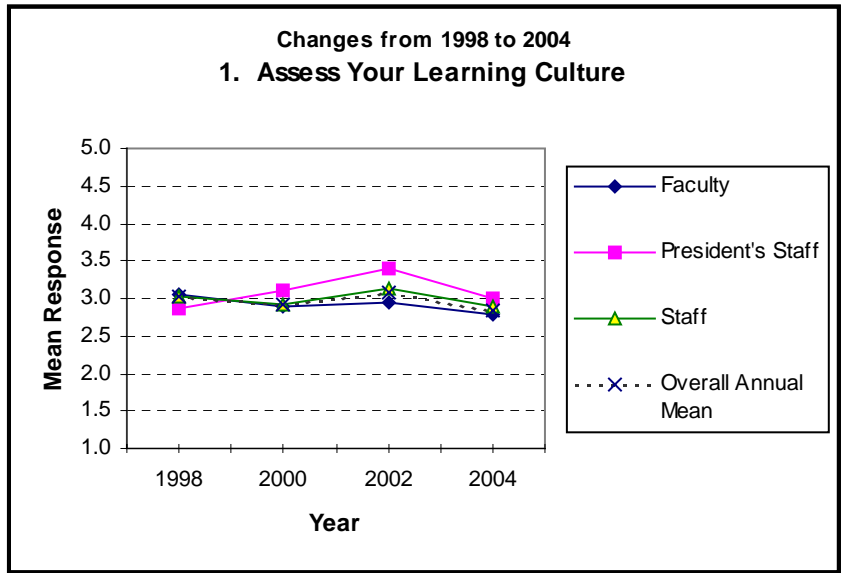
Changes Over Time. Results for each learning organization characteristic and average of all 10 characteristics are plotted for the three employee groups and employees overall in Figures 1 through 11, and significant differences between years for employees overall and/or particular employee groups and by campus are illuminated as follow: From 1998 to 2000, there was no significant change for any of the 10 characteristics. From 2000 to 2002, the only significant difference detected was an increase in staff perception relative to Characteristic #6 ("Putting Learning Power to Work"). However, from 2002 to 2004, declines were noted for 5 of the 10 characteristics, and 4 of the 5 decreases were for all employees at both campuses, combined. Further, there was a significant decrease in the overall group average of the 10 characteristics for Staff and employees as a whole from 2002 to 2004. The only significant four-year change noted was an increase in Characteristic #6 ("Put Learning Power to Work") from 1998 to 2002, and this difference related only to Staff. Finally, the only change noted for the six-year period (1998 to 2004) was a college-wide decrease (all employees at both campuses combined) for Characteristic #2 ("Promote the Positive").

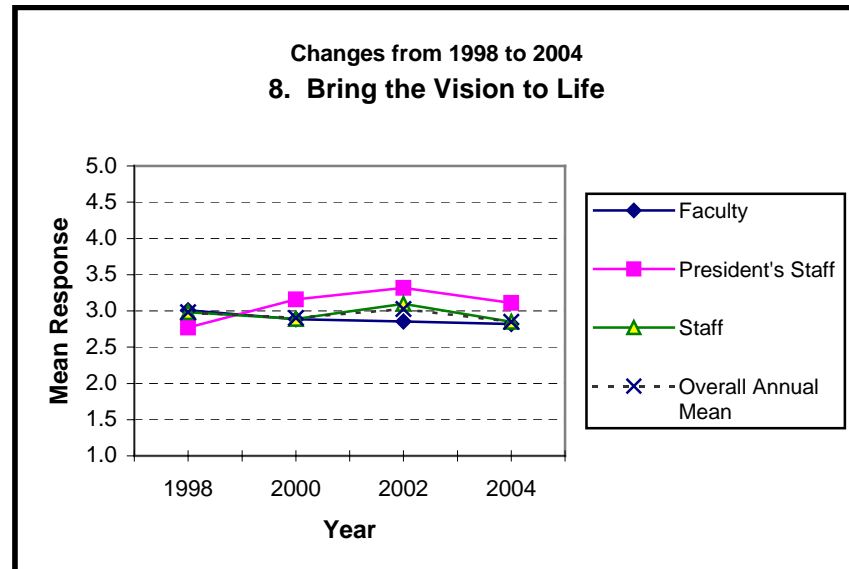
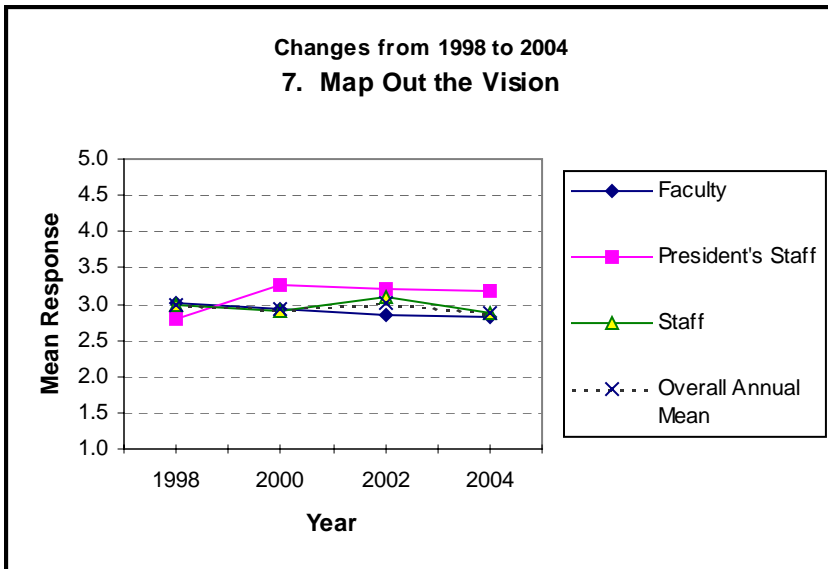
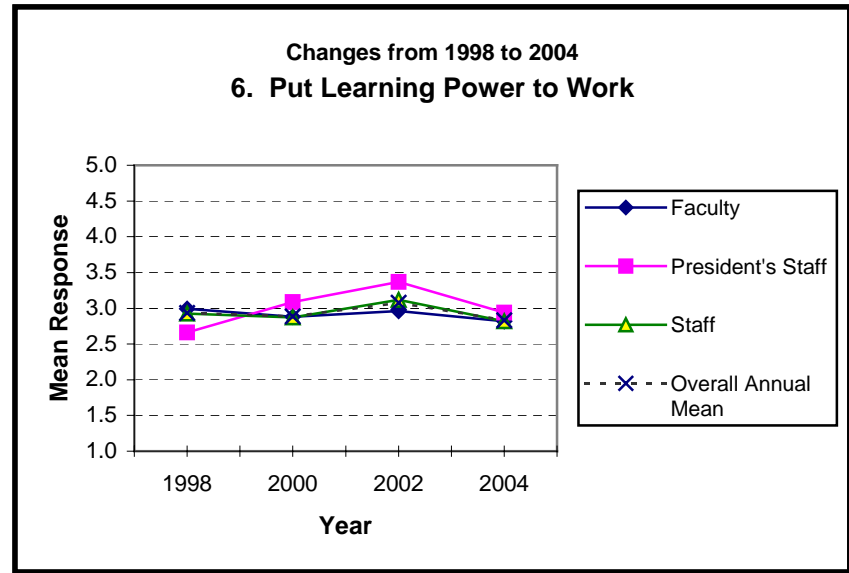
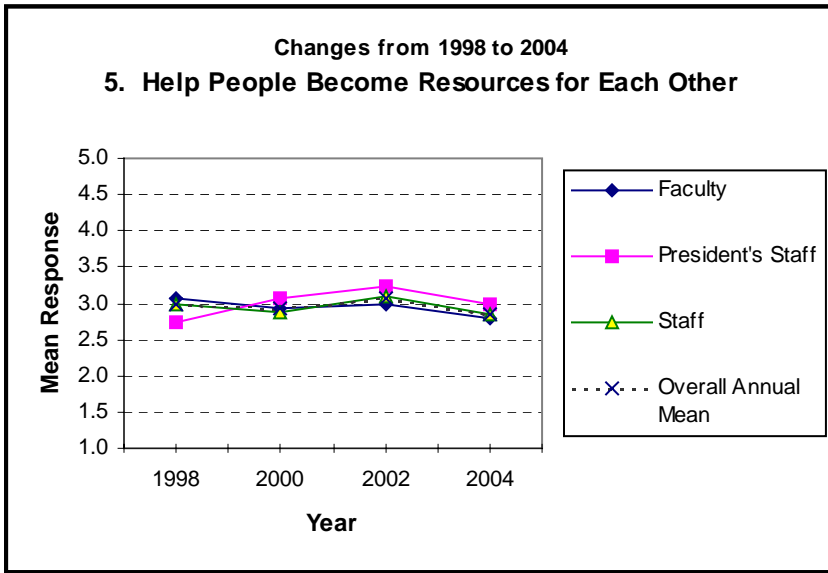
Summary:

The College obviously has experienced a flux (or change) in employee perceptions relative to values measured by the Learning Organization Survey over the past six years. There appeared to be some gains during the earlier part of the six-year period, but some of those gains were erased by declines in the past two to three years. Also, as a group, President's Staff appeared to reflect this pattern (even though few of the apparent changes were significant due to particularly small sample sizes). If those apparent changes were real, it could have resulted in part from staff turnover within this very small group during the six-year period. A change that was significant related to Ft. Riley employees rating the College higher in the first four years of the six-year period, but then given declines at Ft. Riley by 2004, Main Campus employees then were rated significantly higher than at Ft. Riley.

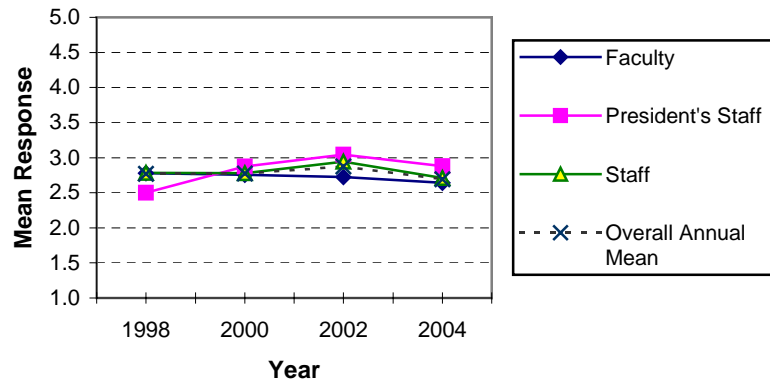
Several possible factors that may relate to these changes for employees collectively or by group and over time potentially include special events/issues the College has faced recently, financial challenges for the College during the past few years, a related reduction in the number of employees (at a time when certain segments of College business have increased, resulting in increased workload for at least some employees), a decline in training initiatives in recent years, a lack of salary increases for the past two years, etc.

Overall, the results of this Learning Organization Survey throughout the six-year period would suggest that the College continues to face particular challenges as it strives to become more clearly perceived as a learning organization by its employees. Hopefully, initiatives undertaken by the Planning Implementation Council (PIC) and President's Staff and others in the past few months relative to Continuous Quality Improvement training and process management will reverse the recent downward trend and improve employee perception of the College's efforts.

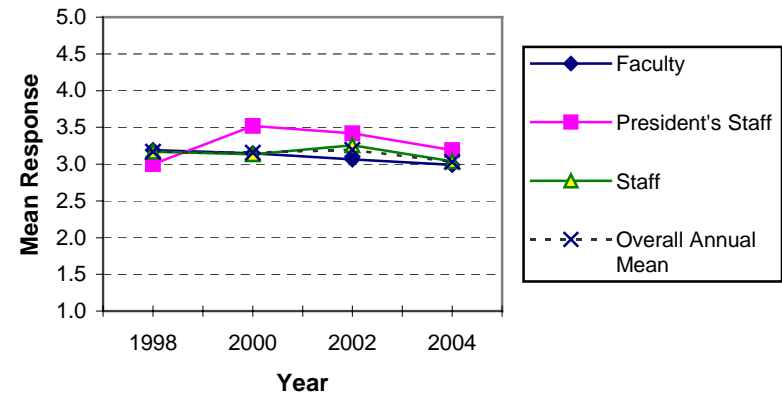




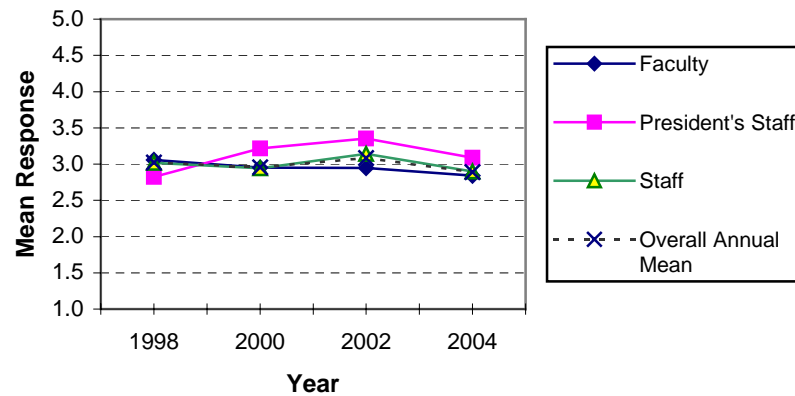
Changes from 1998 to 2004
9. Connect the Systems



Changes from 1998 to 2004
10. Get the Show on the Road



Changes from 1998 to 2004
Overall Averages for Groups



POLICY TYPE: EXECUTIVE LIMITATIONS

POLICY TITLE: GENERAL EXECUTIVE CONSTRAINTS

The President shall act at all times in an exemplary manner consistent with the responsibilities and expectations vested in that office. The President shall act in a manner consistent with Board policies and consistent with those practices, activities, decisions, and organizational circumstances, which are legal, prudent, and ethical.

Accordingly, the President may not:

General Executive Constraint #5

Permit conflict of interest in awarding purchases or other contracts or hiring of employees.

Response: To my knowledge, no conflict of interest regarding purchases, contracts, or hiring has occurred. I believe institutionally, we continue to demonstrate that our purchasing processes provide fairness, preference to local business whenever possible, and encourage competition so the taxpayers receive the most for their money. Additionally, we continue to use personnel screening and selection processes that encourage qualified and quality applicants and fairness in appointments. As it relates to this last item, we maintain processes that allow us to expeditiously make appointments when it is thought to be in the best interest of the College.

General Executive Constraint #9

Allow assets to be unprotected, inadequately maintained, or unnecessarily risked.

Response: To my knowledge, all assets are protected and with no or minimal risk. The only possible exception, of which the Board is already aware, has been created by the state's budget crisis. That exception is -- in meeting our projected budget's expenditure plan, we have had to make the difficult decision to recommend no increases in salaries as well as delay significant capital expenditures. These two areas are significant assets that need to be maintained.

On both fronts, we will monitor the reactions to the budget shortfall and bring to the Board's attention anything that might place these assets in further jeopardy.

POLICY TYPE: EXECUTIVE LIMITATIONS

POLICY TITLE: FINANCIAL CONDITIONS

The President shall administer the Board approved budget without material deviation from Board priorities in ENDS policies, and shall protect the College from financial risk.

Accordingly, the President may not:

Financial Condition #3

Make any purchase: (a) without prudent protection against conflict of interest; (b) over \$10,000 without Board approval; (c) over \$10,000 without seeking at least three competitive quotes or sealed bids, submitted on prepared specifications. No purchase shall be made except on the basis of quality, cost, and service. Consideration shall be given to local vendors who can provide like quality products and services and who meet bid specifications.

Response: Following review of this constraint with the Dean of Business Services, I feel confident that the College is in compliance with the policy. We remain sensitive and judicious in balancing the need to support the local economy with making wise purchases in stretching limited tax dollars.

Financial Condition #6

Fail to maintain adequate reserves which allow the College cash reserve to drop below 8% of its annual budget, working toward a goal of 16%.

Response: The Board has been apprised that progress toward this goal was made over the course of the past year. The cash reserve is above the 8% floor and we believe that this past year's budget has, for the third or fourth year in a row, helped us realize growth in the reserves. The reserves, as you are aware, were to be used this year as part of the budget expenditure plan as we face the fallout of the state's revenue crisis. However, in that anticipated further state reductions were not forthcoming I do not anticipate a reserve reduction this year. We should experience some growth that will help us through next year when our revenues are reduced because of enrollment declines at the Fort.

Financial Condition #8

Fail to provide a monthly report of the College's current financial condition.

Response: Each month, as part of the Board’s agenda, “Claims” and “Financial Reports” are presented for the Board’s review and action. The reports accurately reflect the fiscal condition of the institution. Further, information regarding the Foundation’s fiscal condition is provided to the Trustees from the Foundation Office each month. The clarifying questions asked by the Board are appreciated, as they help us to more fully discharge our accountability to the public.

Financial Condition #9

It is material deviation to allow cash to drop below the amount needed to settle payroll and debts in a timely manner.

Response: While we anticipated a difficult fiscal year and have had concerns about what the economy would bring and may yet bring next fiscal year, we do not anticipate an inability to meet payroll or address debts in a timely manner. In fact I perceive the planning and action taken have kept the College in a relatively positive position considering the obstacles we’ve had to face.

Financial Condition #10

It is material deviation to allow tax payments or other government-ordered payments or filings to be overdue or inaccurately filed.

Response: The College has not received notice of any government-ordered payments that are due. The College’s filings of reports have been timely and accurate.

POLICY TYPE: EXECUTIVE LIMITATIONS

POLICY TITLE: COMMUNICATION AND COUNSEL TO THE BOARD

The President shall keep the Board adequately informed.

Accordingly, the President shall not:

Communication and Counsel to the Board #3

Present information in an inappropriate form that is inaccurate, incomplete, or misleading.

Response: To the best of my knowledge, reports and information provided to the Board have been in a form that is clear and the information has been accurate, complete, and timely. Should the Board have suggestions as to how to improve the delivery of information, their suggestions would be most welcome.

JUNE BOARD MEETINGS/ACTIVITIES

- Wed., June 2** **Board Tour of Facilities with Mark Dean – 10:30 a.m.**
(meet Mark in U-219)
- Board Study Session – 12:00 noon – U-219 (upper level
of the Student Union)**
- Thurs., June 10** **Fort Riley Graduation – 1:00 p.m. (depart from the Great
Bend Campus Admin. Bldg. at 8:45 a.m.)**
- Tues., June 15** **Regular Monthly Board Meeting – 4:00 p.m. – U-219**
- Fri., June 25 and
Sat., June 26** **KACCT/COP Retreat – Dodge City Community College**
(complete travel schedule will be provided at a later date)

Note: Both the Great Bend and Fort Riley campuses will be closed on Monday, July 5 for the Independence Day holiday.

President's Monthly Activities
April 1-30, 2004

- April 1 Met with prospective BSA District Commissioner
Met with Johnson Control representatives and Mark Dean regarding potential projects
- April 2 Held a meeting with Dr. Gabelmann, Lou Kottmann, and a faculty member
- April 6 Traveled to North Central Kansas Technical College in Beloit to meet with Dr. Mihel to discuss cooperative projects
- April 7 Facilitated President's Staff Meeting
Attended the Special Board Meeting
Attended the Board Study Session
- April 8 Attended Great Bend Chamber Coffee at Golden Belt One Stop
Met with doctors at the Surgical & Diagnostic center regarding the College's Nursing Program
- April 9 – 12 Good Friday & Easter – College Closed
- April 13 Vacation
- April 14 Attended the Kansas Center for Community Economic Development (KCCED) Conference in Great Bend
- April 15 Attended KCCED conference in Great Bend and presented a session on the College's Strategic Planning efforts
Attended LWIB Negotiations Meeting in Great Bend
- April 16 Participated in the Great Bend Adult Academy
Along with other staff served students at the Spring Formal
- April 18 Attended the Phi Theta Kappa induction ceremony
- April 19 Met with Glenn Opie & Larry Kopke regarding the Morrison project
Met with Mark Bretches, Great Bend Police Department
Met with Dr. Dave Hietala, Barclay College
Attended a Great Bend Campus Faculty Meeting
- April 20 Attended Presidential Scholars Luncheon
Attended Board Meeting
- April 21 Facilitated President's Staff Meeting
Attended LWIB Meeting
Met with Midwest Utility Pipeline and Training Center partners

Met with Steve Mermis and Craig Anderson from UMB

April 22-27 Attended AACC in Minneapolis and represented the College on the Research Commission of AACC

April 28 Facilitated PIC Meeting
Facilitated President's Staff Meeting

April 29 Attended Special Board Meeting
Met with Interrobang editor

April 30 Attended Edu-Kan Annual Meeting in Dodge City
Met with staff regarding funding for the Midwest Utility and Pipeline Training Center

NOTICES AND COMMUNICATIONS

Letter from Paul Dornberger of Hoisington

Letter from the National Accrediting Agency for Clinical Laboratory Sciences

Letter from Jennifer Pfortmiller

Paul Dornberger
353 W. 1st
Hoisington, KS. 67544

RECEIVED
MAY 11 2004
PRESIDENT'S OFFICE
BOCC

Board of Trustees
245 No. E. 30 Rd.
Great Bend, KS. 67530

A Memorial for Sergeant Jacob Lee Butler

As a member of the armed forces and a student attending Barton County Community College, it is very important that Barton memorialize one of their own, Sgt. Jacob Lee Butler. Although Sgt. Butler did not attend the campus here, he did attend the Barton campus located at Ft. Riley, KS. This letter is a formal plea to the Board of Trustees at both the Barton County and Ft. Riley Campus, to remember Sgt. Butler in a manner other than just with words. Sgt. Butler gave his life for his country just a little over a year ago while serving in Iraq. He died an American hero and deserves a memorial to honor and remember him.

On April 26, 1978, Cynthia Butler, the wife of James Butler, gave birth to twin boys, Jacob L. and Justin M. Butler. James and Cynthia also had three other sons, James C. Butler Jr., Joshua M., and Robert J. Butler. The Butlers resided in Merriam, KS, a rural community located in the northeast part of Johnson County, KS. approximately eight miles from downtown Kansas City, Missouri. In 1990, the Butlers moved to Wellsville, KS, also a rural community located forty miles southwest of Kansas City, Missouri. Growing up, Jake enjoyed fishing, hunting, and raising cattle. According to his mother, he also enjoyed spending time with his family and friends. Upon graduating from Wellsville High in 1996, he spent the next two years working for Nolkes Cash

Service, prior to enlisting in the military.

Butler enlisted in the United States Army in November of 1998. He completed his basic and advanced individual training at Ft. Hood Texas as a Cavalry scout. He re-enlisted on March 23, 2001 and was transferred to Headquarters Company of the 1st Battalion, 41st Infantry Regiment at Ft. Riley, KS. During Butler's military career, he served two successful tours in Kuwait, the first in 1999 and the second in 2002. In March of 2003, Butler's unit was deployed on a third tour to Kuwait. On April 1, 2003, in as- Samawah, Iraq, the convoy Butler was in came under enemy fire. Butler was killed in action after he ordered his driver to provide protection for a disabled Humvee by pulling between it and the enemy fire. During his illustrious military career, Butler received several medals which included but were not limited to: the Army Commendation Medal with two oak leaf clusters, the Armed Forces Expeditionary Medal with service star, and the Purple Heart, which he earned on his last deployment.

Many people may feel that Sgt. Butler only died as a soldier, performing the duty he volunteered for and not as a hero. However, Jim Butler, Jacob's father, recalls a conversation between Jacob and himself some days before the deployment that took his son's life. While they were watching the movie We Were Soldiers, Jacob told his father about a dream in which a friend of the family who had died years ago tells him he would be in heaven soon. He also told his father what music he wanted played at his funeral.

"Why are you telling me this?" Jim Butler asked.

"Dad," Jacob said, "I know I'm going to die in Iraq."

Jim could not speak, could not breathe. Days later, Jake told his father once more about his dream; Jim Butler knew what to say this time.

"If anything happens to you, I will go to Iraq. I saw each of my five sons born into this

world, I will see the place where any left it, and that's a promise."

Jim believes his son is a hero because he left for a war knowing he would not survive.

Upon the safe return home of the remainder of Jacob's unit, the Butlers invited all of them to a barbecue at their home in Wellsville, KS. James recalls that one soldier, Staff Sgt. (SSGT.) Alex Valesco arrived later than the rest. James could tell that SSGT. Valesco was uncomfortable as his eyes darted around the room. As James approached, he overheard SSGT. Valesco say to another soldier,

"I wasn't sure if I should come. I didn't know if I'd be welcomed or whether Mr. Butler would yell at me."

James embraces him with a hug and asks,

"Why would you think you wouldn't be welcome?"

"Jake saved my life-and may have died because of it," SSGT. Valesco replied.

SSGT. Valesco explained to Mr. Butler the details of the incident that occurred on the day Jake died. With disregard for his own safety, Jake put his life in danger to save a comrade, for that he lost his life and became a hero.

There are numerous ways in which the Barton County and/or Ft. Riley campus could establish a memorial to honor and remember Sgt. Butler. One way would be to start a scholarship in his name. Potential recipients of the scholarship would have to be prior or present members of the Armed Forces. A second option could be a plaque or similar memorial that would have his name and information about his death engraved. Plus, it would have additional room on it for the names of other soldiers who have or will attend either campus and possibly die while serving their country. Upon noticing that both U.S. flags fly on the north side of the Barton campus, a third pole and flag, as well as a memorial wall, could be put up on the south side of campus, in Sgt.

Butler's name.

As an active member of the Kansas Army National Guard, it would be my duty to go to war if called upon, and I would go! Personally, the loss of Sgt. Butler and the other American GI's is horrendous, but nonetheless, a part of war. The fact that Sgt. Butler attended Barton's Ft. Riley campus proves that even college students can and will be deployed, without exception. The fact that Sgt. Butler died protecting his comrades is noble; however, his death is tragic, not noble. A soldier should be prepared to die for his or her country, but that is not their job. We must go on with our lives, but we must not forget the loved ones we have lost. As previously stated, the college should establish some sort of memorial to honor and remember Sgt. Jacob Lee Butler.

Sgt. Jacob Lee Butler lost his life in order to save another, for that he is a hero and deserves a memorial. To me, a hero is a person who does something exceptional with no regard for his/her own personal safety. For this reason, if anyone doubts that Sgt. Butler is a hero, they should do some serious soul searching. The implications of this essay ask that one or both campuses establish a memorial to honor and remember Sgt. Butler. In short, I believe that the college should memorialize Sgt. Butler so that students here will know what he did, and not forget one of their own.

Sincerely,
Paul M. Donberger
620-653-4215



National Accrediting Agency
for Clinical Laboratory Sciences

A NON-PROFIT ORGANIZATION

April 19, 2004

Veldon Law, EdD
President
Barton County Community College
245 NE 30th Road
Great Bend, KS 67530-9803

Dear President Law:

Enclosed is the NAACLS Board of Directors' official accreditation award for your Clinical Laboratory Technician/Medical Laboratory Technician program from the April 8, 2004 meeting.

The Board of Directors' award is based on the continuing accreditation review process that included a site visit of your program on September 10-11, 2003.

Accreditation for your program will continue until April 30, 2011. As a result, your program will commence the continuing accreditation process with submission of the Self-Study Report on April 30, 2010, and the scheduling of a site visit during Fall 2010. We provide this information to assist you in your program's administrative and financial planning.

This letter and the accompanying award represent formal accreditation by NAACLS. The NAACLS Certificate of Accreditation will be forwarded to the Program Director.

Sincerely,

David D. Gale, PhD
President, NAACLS Board of Directors

cc: Leonard Bunselmeyer, Jr., MS, MT(ASCP), Program Director
LaVonne Gerritzen, Associate Dean, Career and Technical Education

RECEIVED
APR 22 2004
PRESIDENT'S OFFICE
BCCC

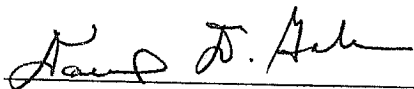
NAACLS BOARD OF DIRECTORS' ACCREDITATION AWARD

The Clinical Laboratory Technician/Medical Laboratory Technician Program of **Barton County Community College** in **Great Bend, Kansas** is awarded Continuing Accreditation for **seven (7) years**.

Leonard Bunselmeyer, Jr., MS, MT(ASCP) is recognized as Program Director.

The following institutions are recognized as the clinical affiliates of the program:

St. Catherine Hospital	Garden City, KS
Central Plains Laboratories	Hays, KS
Hutchinson Hospital	Hutchinson, KS
Pratt Regional Medical Center	Pratt, KS
Russell Regional Hospital	Russell, KS
Clara Barton Hospital	Hoisington, KS
Hospital District #1 of Rice County	Lyons, KS
Memorial Hospital	McPherson, KS
Peterson Clinical Laboratories	Manhattan, KS
Mercy Health Center	Manhattan, KS
Salina Regional Health Center	Salina, KS
Central Kansas Medical Center	Great Bend, KS
Hutchinson Clinic	Hutchinson, KS
Mitchell County Hospital	Beloit, KS
Trego Lemke Memorial Hospital	WaKeeney, KS
Cloud County Health Center	Concordia, KS
Phillips County Hospital	Phillipsburg, KS
Western Plains Medical Complex	Dodge City, KS
Hiawatha Community Hospital	Hiawatha, KS
St. Francis Health Center	Topeka, KS
Newman Regional Health	Emporia, KS
Community Memorial Healthcare, Inc.	Marysville, KS
Smith County Memorial Hospital	Smith Center, KS
Citizens Medical Center	Colby, KS
Dodge City Medical Center	Dodge City, KS



David D. Gale, PhD
President, NAACLS Board of Directors



Olive M. Kimball, PhD, EdD
Chief Executive Officer

April 8, 2004

RECEIVED

APR 28 2004

PRESIDENT'S OFFICE
BCCC



Kansas State University®

K-State at Barton

Division of Continuing Education

245 NE 30th Road

Great Bend, KS 67530

620-786-1188

Fax: 620-786-1169

www.dce.ksu.edu

www.ksu.edu

Dear Dr. Law -

On behalf of the 31 Show Committee, I would like to thank you for allowing your staff and resources to be used at the Youth Ag Careers and Technology Seminar on April 22.

Ty Mull did an outstanding job rounding up all the technical equipment we needed to present a professional, organized seminar. Judy Mason & Doug Kaiser responded to an emergency "staging" situation in less than 15 minutes. Their willingness to help us, saved the show... as they delivered a stage to our set-up when the original stage ~~didn't~~ didn't show up.

Of course, Steve & the admissions people made every feel welcome and helped keep the event going. We sure appreciated all of their support to the program! Thanks again.

35

Jennifer Pfortmiller

Meeting of the Board of Trustees
Barton County Community College

May 18, 2004

EXECUTIVE SESSION

Detail: An executive session may be required.

Recommendation: It is recommended that the Board recess to executive session, if needed, in compliance with the Kansas Open Meetings Act.

Action: Board Chair

Meeting of the Board of Trustees
Barton County Community College

May 18, 2004

CONSENT AGENDA

Comments: In accordance with Barton's Board policy governance, the following items are presented to the Board for approval as a part of the Consent Agenda.

Recommendation: After reviewing the detail for each item, it is recommended that the Board approve the Consent Agenda as presented:

- Minutes of the regular meeting of the Board of Trustees, held on April 20, 2004
- Minutes of the special meeting of the Board of Trustees, held on April 29, 2004
- Personnel
- Claims and Financial Report

Action: President's Office

**Regular Meeting of the Board of Trustees
Barton County Community College
April 20, 2004**

CALL TO ORDER

The regular meeting of the Board of Trustees of Barton County Community College was called to order at 4:00 p.m., April 20, 2004, in room U-219 of the Student Union.

ATTENDANCE

Trustees Present: Stephan J. Mermis, Gene O'Connor, Marvin Sessler, Dan Soeken and J.B. Webster

Trustees Absent: Mike Johnson

Other Attendees: Susan Thacker of the Tribune; Bonnie LeRoy of the Interrobang; Randall Henry; Kevin Cowan, Bond Counsel; Dr. Tim Kimmel; Jackie Elliott; Mike Dawes; Ron Vratil; Dr. Gillian Gabelmann; Cathie Oshiro; Neil Elliott; Elaine Simmons; Dick Wade; Dr. Veldon Law and Marilyn Beary

Chairman Mermis led the attendees in the Pledge of Allegiance.

PUBLIC AND EMPLOYEE COMMENT

No requests for public and/or employee comment were received.

INTRODUCTION OF NEW EMPLOYEES

➤ Marilyn Beary introduced Pamela Welsh, temporary replacement employee for Angela Brummer.

STAFF REPORTS

➤ Jane Howard presented a staff report on Barton's Business Management and Leadership Program. Graduates from the program, Edith McQuade and Denise Penn accompanied Mrs. Howard.

ACTION ITEMS

Resolution to Refinance Certificates of Participation

The Board was requested to approve a resolution, consummating the offering for sale lease purchase agreement certifications of participation, Series 2004, as approved at the special Board meeting on April 7, 2004. *Trustee Sessler moved that the Board approve a resolution authorizing Barton County Community College to execute and deliver a second supplemental lease purchase agreement and a second supplemental assignment and trust agreement in connection with the issuance and delivery of \$1,005,000 principal amount of lease purchase agreement refunding certificates of participation, series 2004, upon the terms and conditions set forth therein, for the purpose of refunding certain outstanding lease purchase agreement certificates of participation, series 1993. The motion was seconded by Trustee O'Connor.* Following discussion, the motion carried.

Contract with Local Workforce Investment Board (LWIF) Area I

At its April monthly study session, the Board was notified that the College had submitted a proposal for the Administrative Entity Contract with the Local Workforce Investment Board (LWIB) Area I, and that it had been awarded the bid. It was recommended at today's meeting that the Board of Trustees authorize the President to enter into negotiations and accept a contract with the Local Workforce Investment Board (LWIB) Area I, permitting Barton to serve as the Administrative Entity. It was further recommended that the Board authorize the President to enter into the contract, following review and approval of the contract by legal counsel.

Trustee Webster moved that the Board authorize the President to enter into negotiations and accept a contract with the Local Workforce Investment Board (LWIB) Area I, permitting Barton to serve as the Administrative Entity and to authorize the President to enter into the contract, following review and approval of the contract by legal counsel. The motion was seconded by Trustee Sessler. Trustee O'Connor voted in the negative. Following discussion, the motion carried.

Grant Application Requests

The Board was presented with two grant application requests for consideration: 1) Carl Perkins Tech Grant in the funding range of \$60,000 and 2) Carl Perkins Improvement Grant in the funding range of \$203,334.

Trustee Soeken moved that the Board authorize the College to apply for the Carl Perkins Tech Grant in the funding range of \$60,000 and the Carl Perkins Improvement Grant in the funding range of \$203,334 as presented. The motion was seconded by Trustee O'Connor. Following discussion, the motion carried.

KACCT/KBOR REPORT – Dr. Law advised that he had been unable to attend the KBOR meeting but shared with the Trustees the action that had been taken, from his recollection of the meeting minutes.

INFORMATION/DISCUSSION ITEMS – The following were presented for the Board's information and discussion:

- Monitoring Reports
- Upcoming Board Meetings/Activities
- President's Report of Monthly Activities

NOTICES AND COMMUNICATIONS

- Student Senate Resolution supporting the use of student fees

EXECUTIVE SESSION

Chairman Mermis advised that an executive session would be needed for the purpose of discussing personnel matters pertaining to non-elected personnel, in order to protect the privacy interests of the individual(s) to be discussed. Randall Henry and Dr. Law joined the Trustees in executive session.

Trustee Sessler moved that the Board recess to executive session for 60 minutes at 5:18 p.m. for the purpose of discussing personnel matters pertaining to non-elected personnel, in order to protect the privacy interests of the individual(s) to be discussed, to reconvene in room U-219 of the Student Union at 6:18 p.m. The motion was seconded by Trustee Webster. Following discussion, the motion carried.

Neil Elliott was asked to join the Board in executive session at 5:20 p.m. and he was excused from executive session at 5:38 p.m. at which time Dr. Gillian Gablemann was asked to join the Board in executive session.

Open Session – The recessed session of the Board of Trustees of Barton County Community College reconvened at 6:18 p.m. in room U-219 of the Student Union. Chairman Mermis advised that matters pertaining to non-elected personnel were discussed and no action was taken.

Chairman Mermis advised that the Board would need to again recess to executive session to continue its discussion on personnel matters pertaining to non-elected personnel, in order to protect the privacy interests of the individual(s) to be discussed and asked that Randy Henry again join the Trustees in executive session.

Trustee Sessler moved that the Board recess to executive session for 5 minutes at 6:21 p.m. to discuss personnel matters pertaining to non-elected personnel, in order to protect the privacy interests of the individual(s) to be discussed, to reconvene in room U-219 of the Student Union at 6:26 p.m. The motion was seconded by Trustee O'Connor. Following discussion, the motion carried.

Open Session – The recessed session of the Board of Trustees of Barton County Community College reconvened at 6:26 p.m. in room U-219 of the Student Union. Chairman Mermis advised that matters pertaining to non-elected personnel were discussed and no action was taken.

CONSENT AGENDA

Chairman Mermis advised that the Consent Agenda would need to be amended to include the following additional personnel items, received after the Board book was published:

Resignations/Terminations – Jeff Carter, Assistant Coach (Women’s Basketball) and Cheyla Clawson – Assistant Coach (Dance Line and Pom). Replacement Positions – Toni Gross, Assistant Coach (Women’s Basketball).

The following items, as amended, were presented for the Board’s approval:

- Minutes of the regular meeting of the Board of Trustees, held on March 15, 2004
- Minutes of the special meeting of the Board of Trustees, held on April 7, 2004
- Personnel
- Claims and Financial Report

Trustee Sessler moved that the Board approve the amended consent agenda, with the additions that were distributed. The motion was seconded by Trustee Soeken. Following discussion, the motion carried.

ADDITIONAL ACTION ITEMS

Contract Renewals

During executive session, the Board was presented with the Administration’s recommendations for full-time faculty, head coaching and administrative contract renewals for the 2004-2005 academic year. It was now recommended that the Board approve the Administration’s recommendations for 2004-2005 contract renewals as presented.

Trustee Sessler moved that the Board approve the lists of full-time faculty, head coaching and administrative contract renewals for the 2004-2005 academic year as presented. The motion was seconded by Trustee Soeken. Following discussion, the motion carried.

Granting Tenure

Following approval of the 2004-2005 contracts, the following faculty members were recommended for tenure:

- Dana Allison – Graphic Arts Instructor
- Kathy Heidrick – MLT Instructor
- Brian Howe – Mathematics Instructor
- Ron Kirmer – Automotive Instructor
- Darcy Wedel – Automotive Instructor & Coordinator

Trustee Webster moved that the Board approve tenure status for Dana Allison, Kathy Heidrick, Brian Howe, Ron Kirmer and Darcy Wedel as presented. The motion was seconded by Trustee O’Connor. Following discussion, the motion carried.

Chairman Mermis read aloud a letter of appreciation to Dr. Veldon L. Law from the Board of Trustees.

ADJOURNMENT – The meeting adjourned at 6:35 p.m.

Gene O’Connor, Trustee

Dan Soeken, Vice Chairman

Recorded by Marilyn Beary

**Special Meeting of the Board of Trustees
Barton County Community College
April 29 2004**

CALL TO ORDER

The special meeting of the Board of Trustees of Barton County Community College was called to order at 11:30 a.m., April 29, 2004, in room A-135 of the Administration Building.

ATTENDANCE

Trustees Present: Mike Johnson, Stephan J. Mermis, Marvin Sessler and J.B. Webster

Trustees Absent: Gene O'Connor and Dan Soeken

Other Attendees: Susan Thacker of the Great Bend Tribune; Zack Becker and J.R. Emig, student representatives of the Interrobang; Michael Dawes; Dick Wade; Randall Henry; Dr. Veldon Law and Marilyn Beary

PUBLIC AND EMPLOYEE COMMENT

No requests for public and/or employee comment were received.

EXECUTIVE SESSION – Chairman Mermis advised that an executive session would be necessary for the Board to consult with the College attorney on matters of attorney-client privilege and asked that Randall Henry and Dr. Law join the Trustees in executive session.

Trustee Sessler moved that the Board recess to executive session for 60 minutes at 11:35 a.m. for the purpose of consulting with the College attorney-client privilege, to protect the privilege and the Board's position in litigation, potential litigation, administrative procedures, etc. to reconvene in room A-135 in the Administration Building at 12:35 p.m. The motion was seconded by Trustee Webster. Following discussion, the motion carried.

Open Session – The recessed session of the Board of Trustees of Barton County Community College reconvened at 12:35 p.m. in room A-135 of the Administration Building. Chairman Mermis advised that the Board had consulted with the College attorney on matters of attorney-client privilege and no actions or votes were taken.

Chairman Mermis then advised that the Board would need to return to executive session to continue its discussion with the College attorney on matters of attorney-client privilege and again asked that Randall Henry, Dr. Law and Dick Wade join the Trustees in executive session.

Trustee Sessler moved that the Board recess to executive session for 30 minutes at 12:35 p.m. to discuss matters related to consult with the College attorney on matters of attorney-client privilege, to reconvene in room A-135 in the Administration Building at 1:05p.m. The motion was seconded by Trustee Johnson. Following discussion, the motion carried.

Open Session – The recessed session of the Board of Trustees of Barton County Community College reconvened at 1:05 p.m. in room A-135 of the Administration Building. Chairman Mermis advised that the Board had consulted with the College attorney on matters of attorney-client privilege and no actions or votes were taken.

Chairman Mermis then advised that the Board would need to return to executive session to continue its discussion with the College attorney on matters of attorney-client privilege and again asked that Randall Henry, Dr. Law and Dick Wade join the Trustees in executive session.

Trustee Sessler moved that the Board recess to executive session for 30 minutes at 1:10 p.m. to discuss matters related to consult with the College attorney on matters of attorney-client privilege, to reconvene in

room A-135 in the Administration Building at 1:40 p.m. The motion was seconded by Trustee Johnson. Following discussion, the motion carried.

Note: Dick Wade was excused from the executive session at 1:30 p.m.

Open Session – The recessed session of the Board of Trustees of Barton County Community College reconvened at 1:40 p.m. in room A-135 of the Administration Building. Chairman Mermis advised that the Board had consulted with the College attorney on matters of attorney-client privilege and no actions or votes were taken.

ADJOURNMENT – The special meeting adjourned at 1:40 p.m.

Mike Johnson, Secretary

J.B. Webster, Trustee

Recorded by Marilyn Beary

PERSONNEL

New Positions

ITV Coordinator

Retirements

Barbara Jordan – Math & Science Specialist

Resignations/Terminations

Cynthia Collier –Specialist I

Mike Compton – Instructor (Instrumental)

John Hunter – Head Coach (Volleyball)

Lolita Jones – Secretary & Data Specialist (part-time)

Christopher Lamb – Instructor – Fort Riley Military Programs

Lori Owens – Admissions & Records (Fort Riley)

Temporary Assignments

Todd Ammeter – Camp Aldrich (part-time)

Laura Hickel – Camp Aldrich (part-time)

Elizabeth McQuade – Camp Aldrich (part-time)

Deb Reed – Temporary Faculty Receptionist & Typist (Fine Arts)

Benjamin South – Camp Aldrich (part-time)

Dave Tudor – Camp Aldrich (part-time)

Position Changes

Sarah Bretches – from Associate Faculty Member to Instructor (Mathematics) (part-time)

Stephannie Goerl – from Instructor (English) to Interim Associate Dean of Mathematics, English and Essential Skills

Supplemental Contracts

Steven Artzer

Introduction to Computers

Steven Artzer

Principles of Macroeconomics

Steven Artzer

Personal Finance

Dorothy Arvizu

Cross Cultural Awareness

Dorothy Arvizu

English Study Skills/Math Learning Strategies

Geraldine Ball

World & Regional Geography

Geraldine Ball

American History 1877-Present

Laverne Bitsie-Baldwin

Basic Algebra

Laverne Bitsie-Baldwin

Elements of Statistics

George Bowman

Weapons Storage Facility Oper

George Bowman

Weapons Storage Facility Oper

Winfried Butler

American Military History

Winfried Butler

Intro to Leadership Concepts

Shanna Calvasina

English Composition II

Gilberto Chabarria

Public Speaking

Gilberto Chabarria

Public Speaking

Jerusha Clark

Course Developer/Editing

Richard Clark	Process Management
Richard Clark	Intro to Political Science
Michael Cox	Supervisory Development
Michael Cox	Western Civilization 1500-Present
Michael Cox	Military History/American Revolution
Karen Frick	General Psychology
Karen Frick	Introduction to Counseling
Susan Greene	Intermediate Algebra
Susan Greene	College Algebra
Marlene Kabirol	Language Lab
Lynette Lee	Organization Maintenance Mgmt
Lynette Lee	Maintenance Operat-Supervisors
Kenneth Martin	Military Passeng-Carry Vehicle
Jennifer Miller	English Study Skills/Math Learning Strategies
Robert Patterson	Introduction to Philosophy
Laura Peck	Multimedia Presentations
Gary Sacher	Military Passeng-Carry Vehicle
Candace Teichman	Lifeguard Training
Melinda Whitney	Emerg. 1 st Aid Tact. Operations

Overload Contracts

Christine Abbott	Abnormal Psychology
Walter Brown	Haz. Waste Oper. & Emer. Response
Walter Brown	Laser Weapons
Dennis King	Laser Weapons
Reiley Watson	Combat Lifesaver Recert.

Peer Consulting Contracts

Linda Carson	Kristina Schulte (Marriage & Family)
--------------	--------------------------------------

Community Education

Mary Boman	CMA – Great Bend (5/15/04 – 6/20/04)
Duane Schmidt	Strategies for Success – Ziglar Training (5/18/04 - 6/1/04)
Cathy Holmes	CNA – Great Bend (6/8/04 – 8/5/04)
Kay Boyd	A Way with Word (Computer Training) (6/9/04 - 7/7/04)
Dana Allison	Creating Business Newsletters (6/12/04 – 6/19/04)

Basics

Daniel Winston	Public Speaking – Ellsworth/ECF (5/25/04 – 7/21/04)
Ruth Moritz	English Comp I – Ellsworth/ECF (5/26/04 – 7/13/04)
Randy Allen	Abnormal Psychology – Ellsworth/ECF (5/25/04 – 7/21/04)

Ed Johnson	Intro to Sociology – Ellsworth/ECF (5/22/04 – 7/31/04)
Degree Program	
Brenda Leiker	Advertising – Russell (6/8/04 – 8/10/04)
Outreach	
Judith Whitley	Intro to Sociology – Ellsworth (5/26/04 – 7/19/04)
Carolyn Kern	College Algebra – Ellsworth (5/25/04 – 7/15/04)
Christina Rathbun	English Comp II – Ellsworth (5/26/04 – 7/19/04)
Daniel Winston	Public Speaking – Ellsworth (5/25/04 – 7/15/04)
Terry Huff	Intro to Sociology – Larned (5/26/04 – 7/19/04)
Terry Huff	General Psychology - Larned (5/25/04 – 7/15/04)
Donnitta Plowman	Conversational Spanish – Larned (5/26/04 – 7/19/04)
Deborah Kauer	American History – Larned (5/25/04 – 7/15/04)
Teresa Johnson	English Comp I – Larned (5/25/04 – 7/15/04)
Dan Heath	Public Speaking – Larned (5/26/04 – 7/19/04)
Marilyn Michaelis	Basic Algebra – Lyons (5/26/04 – 7/19/04)
Glenna Grinstead	English Comp II – Lyons (5/26/04 – 7/19/04)
Ken Troyer	Public Speaking – Lyons (5/26/04 – 7/19/04)
Ruth Moritz	Intro to Literature – Russell (5/25/04 – 7/15/04)
Nancy Piatt	English Comp I – Russell (5/26/04 – 7/19/04)
Martha Brungardt	Public Speaking – Russell (5/26/04 – 7/19/04)
Kristina Schulte	Marriage & Family – Russell (5/26/04 – 7/19/04)
Thom Withrow	Thai Cooking – Russell (5/15/04 – 5/22/04)
Steve Dryden	Death & Dying – St. John (5/26/04 – 6/29/04)
Steve Dryden	Abnormal Psychology – St. John (5/26/04 – 6/30/04)
Tara Kinnamon	Word Processing Application – St. John (5/26/04 – 6/29/04)

Paula Morris

College Algebra – St. John
(5/25/04 – 6/29/04)

Kim Heath

English Comp I – St. John
(5/25/04 – 6/29/04)

Joel Miller

Photography I & II – St. John
(5/25/04 – 6/29/04)

BARTON COUNTY COMM COLLEGE
Statement of Revenues and Expenditures
AS OF 30-APRIL-04

1111 GENERAL FUND

YEAR TO DATE
ACTUAL

REVENUES:

FALL TUITION	1,205,789.50
SPRING TUITION	1,104,233.50
SUMMER TUITION	30,362.00
FALL OUT OF STATE TUITION	160,242.00
SPRING OUT OF STATE TUITION	129,540.00
SUMMER OUT OF STATE TUITION	1,632.00
ON LINE TUITION	358,424.00
GENERAL STUDENT FEES	0.00
LAVTR	0.00
STATE GRANTS	0.00
STATE OPERATING GRANT	4,349,093.00
COUNTY OUT DISTRICT TUITION	282,261.00
BARTON COUNTY AD VALOREM TAX	4,666,429.64
MOTOR VEHICLE TAX	649,528.88
RECREATIONAL VEHICLE TAX	9,076.91
NEIGHBORHOOD REVIT PRG	4,248.37
DELINQUENT TAXES	199,581.72
TAXABLE SALES	778.01
INTEREST-GENERAL	53,229.69
MISCELLANEOUS REIMBURSEMENTS	262,627.84
INSURANCE REIMBURSEMENTS	0.00
GENERAL MISCELLANEOUS	44,583.41
MISCELLANEOUS SALE OF PROPERTY	13,683.10
TRANSCRIPT REVENUE	33,643.25
MISCELLANEOUS ELECTRONIC DEPT REV	975.04
DONATIONS	0.00
FARM HOUSE RENTALS	6,000.00
FARM LEASE/CROP SALES	14,000.00
PAYMENT PLAN FEES	18,930.00
CAREER CENTER REVENUE	1,600.00
EVALUATION FEES	125.00
ITV REVENUE	10,000.00
INTERNATIONAL STUDENT FEE	4,650.00
REFUNDS-GENERAL	8,240.49
ROOM RENTAL-GENERAL	17,583.51

TOTAL REVENUES	13,641,091.86

BARTON COUNTY COMM COLLEGE
Statement of Revenues and Expenditures
AS OF 30-APRIL-04

1111 GENERAL FUND

YEAR TO DATE
ACTUAL

EXPENDITURES:

INSTRUCTION	4,076,644.33
PUBLIC SUPPORT	2,305.54
ACADEMIC SUPPORT	1,535,614.58
STUDENT SERVICES	727,267.57
INSTITUTIONAL SUPPORT	2,636,791.39
PHYSICAL PLANT OPERATION	1,690,210.28
STUDENT FINANCIAL SUPPORT	184,328.96
AUXILIARY SERVICES	0.00

TOTAL EXPENDITURES	10,853,162.65
TRANSFERS AMONG FUNDS:	
TRANSFERS TO ABE FUND	0.00
TRANSFERS TO ATHLETIC FUND	400,000.00
TRANSFERS TO ATHLETIC ACTIVITY FUND	72,000.00
TRANSFERS TO STUDENT ACT ACTIV FUND	26,000.00

TOTAL TRANSFERS AMONG FUNDS:	498,000.00
NET INCREASE/DECREASE IN NET ASSETS	2,289,929.21

BARTON COUNTY COMM COLLEGE
Statement of Revenues and Expenditures
AS OF 30-APRIL-04

1112 VOCATIONAL FUND

YEAR TO DATE
ACTUAL

REVENUES:

STATE OPERATING GRANT	1,863,898.00
BARTON COUNTY AD VALOREM TAX	0.00
MOTOR VEHICLE TAX	0.00
RECREATIONAL VEHICLE TAX	0.00
DELINQUENT TAXES	0.00
PRIVATE SOURCE GRANT REVENUE	0.00
REFUNDS-GENERAL	1,885.48

TOTAL REVENUES	1,865,783.48

EXPENDITURES:

INSTRUCTION	1,651,730.65
PUBLIC SERVICE	0.00
ACADEMIC SUPPORT	208,234.75
STUDENT SERVICES	0.00
INSTITUTIONAL SUPPORT	0.00
PHYSICAL PLANT OPERATION	0.00
AUXILIARY SERVICES	0.00

TOTAL EXPENDITURES	1,859,965.40
NET INCREASE/DECREASE IN NET ASSETS	5,818.08

BARTON COUNTY COMM COLLEGE
Statement of Revenues and Expenditures
AS OF 30-APRIL-04

1115 EMPLOYEE BENEFIT FUND

YEAR TO DATE
ACTUAL

REVENUES:

BARTON COUNTY AD VALOREM TAX	0.00
MOTOR VEHICLE TAX	0.00
RECREATIONAL VEHICLE TAX	0.00
DELINQUENT TAXES	0.00
MISCELLANEOUS REIMBURSEMENTS	0.00

TOTAL REVENUES	0.00

EXPENDITURES:

INSTRUCTION	588,938.45
PUBLIC SERVICE	58,288.45
ACADEMIC SUPPORT	230,729.45
STUDENT SERVICES	161,399.95
INSTITUTIONAL SUPPORT	326,731.18
PHYSICAL PLANT OPERATION	87,340.70
AUXILIARY SERVICES	29,415.04

TOTAL EXPENDITURES	1,482,843.22

NET INCREASE/DECREASE IN NET ASSETS	(1,482,843.22)
-------------------------------------	----------------

BARTON COUNTY COMMUNITY COLLEGE
GENERAL, VOCATIONAL, AND EMPLOYEE BENEFITS
FUNDS FLOW ACTIVITY
PERIOD ENDED APRIL 30, 2004

	2003-04 BUDGET	PERIOD ENDED 04/30/04	YTD AVAILABLE	% AVAILABLE
Fund Balance, Beginning	\$2,271,636.00	\$2,271,636.00		
<hr/>				
Tuition-Out Of State	212,000.00	291,414.00	(79,414.00)	(0.37)
Tuition-In State	3,381,000.00	2,698,809.00	682,191.00	20.18
Tuition-Out District	265,000.00	282,261.00	(17,261.00)	(6.51)
State Aid	5,735,000.00	6,212,991.00	(477,991.00)	(8.33)
Property Taxes	4,713,000.00	4,879,337.00	(166,337.00)	(3.53)
Other Taxes	828,000.00	649,529.00	178,471.00	21.55
Interest Income	88,000.00	53,230.00	34,770.00	39.51
Other	1,935,000.00	439,305.00	1,495,695.00	77.30
<hr/>				
Total Revenue	17,157,000.00	15,506,876.00	1,650,124.00	9.62
<hr/>				
Expenditures:				
Academic Salaries	5,579,000.00	4,964,180.00	614,820.00	11.02
Support Salaries	3,863,000.00	3,152,711.00	710,289.00	18.39
Supplies	3,304,000.00	2,784,247.00	519,753.00	15.73
Equipment	19,000.00	12,201.00	6,799.00	35.78
Advertising	62,000.00	40,646.00	21,354.00	34.44
Transfers & Other	400,000.00	400,000.00	0.00	0.00
Employee Benefits	1,891,000.00	1,482,843.00	408,157.00	21.58
General Insurance	208,000.00	209,035.00	(1,035.00)	(0.50)
Utilities	584,000.00	535,904.00	48,096.00	8.24
In County Scholarships	136,000.00	142,265.00	(6,265.00)	(4.61)
Capital Outlay	919,000.00	611,191.00	307,809.00	33.49
Maintenance	399,000.00	358,748.00	40,252.00	10.09
<hr/>				
Total Expenditures	17,364,000.00	14,693,971.00	2,670,029.00	15.38%
<hr/>				
Fund Balance, Ending	\$2,064,636.00	\$3,084,541.00		
<hr/>				

BARTON COUNTY COMMUNITY COLLEGE
GENERAL, VOCATIONAL AND EMPLOYEE BENEFITS
FUNDS FLOW ACTIVITY
PERIOD ENDED APRIL 30, 2004 & 2003

	YEAR ENDED		NET CHANGE	%
	04/30/04	04/30/03	INCREASE (DECREASE)	CHANGE
Fund Balance, Beginning	2,271,636	2,082,999	188,637	0
Tuition-Out Of State	291,414	213,085	78,329	37
Tuition-In State	2,698,809	2,483,687	215,122	9
Tuition-Out District	282,261	246,870	35,391	14
State Aid	6,212,991	5,972,544	240,447	4
Out District State Aid	0	0	0	
Property Taxes	4,879,337	4,476,428	402,909	9
Other Taxes	649,529	757,181	(107,652)	(14)
Interest Income	53,230	67,164	(13,934)	(21)
Other	439,305	379,445	59,860	16
Total Revenue	15,506,876	14,596,404	910,472	6
Expenditures:				
Academic Salaries	4,964,180	4,912,941	51,239	1
Support Salaries	3,152,711	3,095,258	57,453	2
Supplies	2,784,247	2,801,049	(16,802)	(1)
Equipment	12,201	18,008	(5,807)	(32)
Advertising	40,646	43,248	(2,602)	(6)
Transfers & Other	400,000	300,000	100,000	33
Employee Benefits	1,482,843	1,506,507	(23,664)	(2)
General Insurance	209,035	218,828	(9,793)	(4)
Utilities	535,904	516,350	19,554	4
In County Scholarships	142,265	133,230	9,035	7
Capital Outlay	611,191	644,004	(32,813)	(5)
Maintenance	358,748	340,602	18,146	5
Total Expenditures	14,693,971	14,530,025	163,946	1
Fund Balance, Ending	3,084,541	2,149,378	935,163	0

BARTON COUNTY COMMUNITY COLLEGE
AUXILIARY FUNDS
FUNDS FLOW ACTIVITY
PERIOD ENDED APRIL 30, 2004

	STUDENT UNION	DORMITORIES	ATHLETICS	CAMP ALDRICH	TEN MONTH ACTIVITY	2003-04 BUDGET	YTD AVAILABLE	% AVAILABLE
Fund Balance, Beginning:	663,935	398,857	42,786	71,154	1,176,732	1,351,626		

Revenues:								
Vending	1,568				1,568	2,000	432	21.60
Bookstore	707,794				707,794	665,000	(42,794)	(6.44)
Food service	315,896			0	315,896	482,000	166,104	34.46
Fees	0			0	0	268,000	268,000	100.00
Supplies & Services		12,675			12,675	28,000	15,325	54.73
Housing Rental		815,097		35,555	850,652	913,000	62,348	6.83
Transfers			400,000	0	400,000	390,000	(10,000)	(2.56)
Revolving					0	0	0	
Misc.	599				599	4,000	3,401	85.03
Gate Receipts			0		0	33,000	33,000	100.00
Entry Fees & Other			10,985	0	10,985	16,000	5,015	31.34

Total Revenues	1,025,857	827,772	410,985	35,555	2,300,169	2,801,000	500,831	17.88

Expenditures:								
Salaries	56,695	41,216	7,536	23,083	128,530	217,000	88,470	40.77
Books & Supplies	680,640				680,640	572,000	(108,640)	(18.99)
Maintenance	10,625	30,797		11,604	53,026	99,000	45,974	46.44
Food	419,015	252,560		0	671,575	850,000	178,425	20.99
Utilities	4,475	90,657		13,366	108,498	161,000	52,502	32.61
Lease payments & Int	11,871	196,474			208,345	202,000	(6,345)	(3.14)
Travel & Recruiting			123,604		123,604	122,000	(1,604)	(1.31)
Officials			28,590		28,590	17,000	(11,590)	(68.18)
Training Supplies			12,790		12,790	17,000	4,210	24.76
Insurance			77,860		77,860	56,000	(21,860)	(39.04)
Equipment	27,839	53,705	93,201	0	174,745	171,000	(3,745)	(2.19)
Clinics & Awards			11,588		11,588	10,000	(1,588)	(15.88)
Transfers & Refunds		0	0		0	30,000	30,000	100.00
Revolving					0	0	0	
Nationals & Fees			14,496		14,496	34,000	19,504	57.36
Supplies	10,111	3,818	50,284	104	64,317	76,000	11,683	15.37
Misc.		0			0	0	0	#DIV/0!

Total Expenditures	1,221,271	669,227	419,949	48,157	2,358,604	2,634,000	275,396	10.46

Fund Balance, Ending	468,521	557,402	33,822	58,552	1,118,297	1,518,626		
=====								

BARTON COUNTY COMMUNITY COLLEGE
 TREASURER'S REPORT
 04/30/04

FUND-DESCRIPTION	BEGIN-BAL	MONTH-RCPT	MONTH-EXP	YTD RCPT	YTD-EXP	END-BAL	CHECKING	INVEST	CHANGE
GENERAL & VOC	1,487,053	468,396	1,254,874	15,507,104	12,779,178	4,214,979	3,820,879	350,000	44,100
EMPLOYEE BENEFITS	0	0	160,800	0	1,482,843	(1,482,843)	(1,482,843)	0	0
STUDENT UNION	599,238	83,509	91,621	1,026,502	1,220,874	404,866	303,866	100,000	1,000
DORMITORY	398,323	(745)	81,683	828,306	669,028	557,601	457,201	100,000	400
CAMP ALDRICH	61,078	140	4,464	35,555	48,065	48,568	48,568	0	0
ATHLETICS	52,863	3,034	35,587	410,985	419,312	44,536	44,536	0	0
	2,598,555	554,334	1,629,029	17,808,452	16,619,300	3,787,707	3,192,207	550,000	45,500

