

2013

Board END 8: Strategic Plan

The College mission will be supported by strategic planning emphasis.

- The institutional mission of the college will be supported by strategic planning goals and objectives.
- Accreditation requirements of the Higher Learning Commission will be satisfied through the development and implementation of strategic planning goals and objectives.
- Kansas Board of Regents policies and mission will be satisfied through the development and implementation of strategic planning goals and objectives.
- Strategic planning goals and objectives shall be measurable in order to demonstrate their effectiveness and to provide accountability to the public

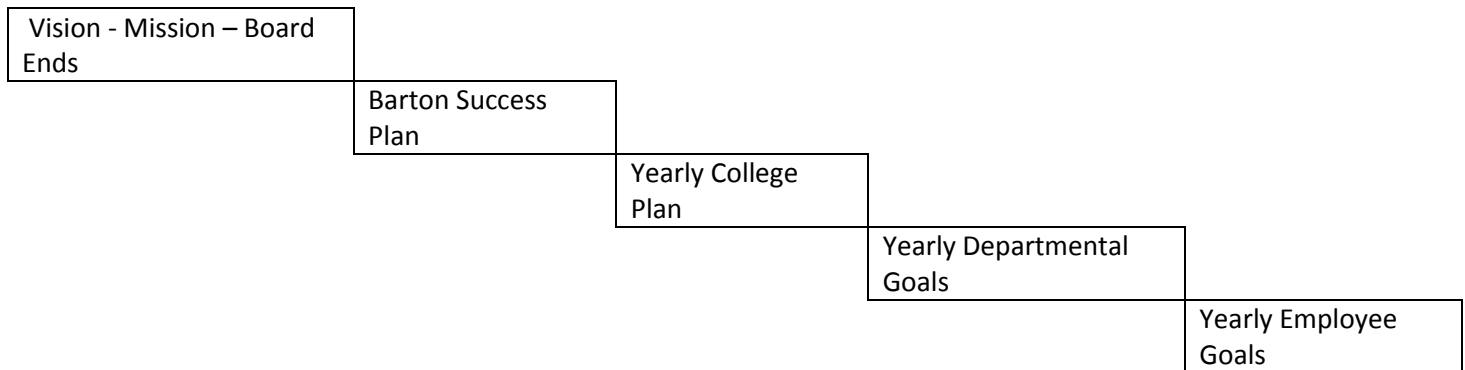
In FY10, the college acknowledged the need for development of a new strategic guide for the next five years (2012-2016). Accordingly, the Barton community completed the Barton Success Plan and we are in year two. Click for [Visual](#) of the planning process. The yearly college plans are kept on the [Strategic plan web site](#).

Throughout the calendar year, the college gives the Board monitoring reports based on the Key Performance Indicators (KPI) approved by the board. ([Board ENDS Monitoring Reports details](#)) These KPI are in the forms of surveys, benchmark reports, pass rates, assessment scores, advisory committees, events, and data sets. After each Board Monitoring Report the President relays to the Office of Institutional Research the Board Take-Aways. These Take-Aways are then used to improve the following year's reports. Info-graphics will be another change implemented starting with the September Monitoring Report.

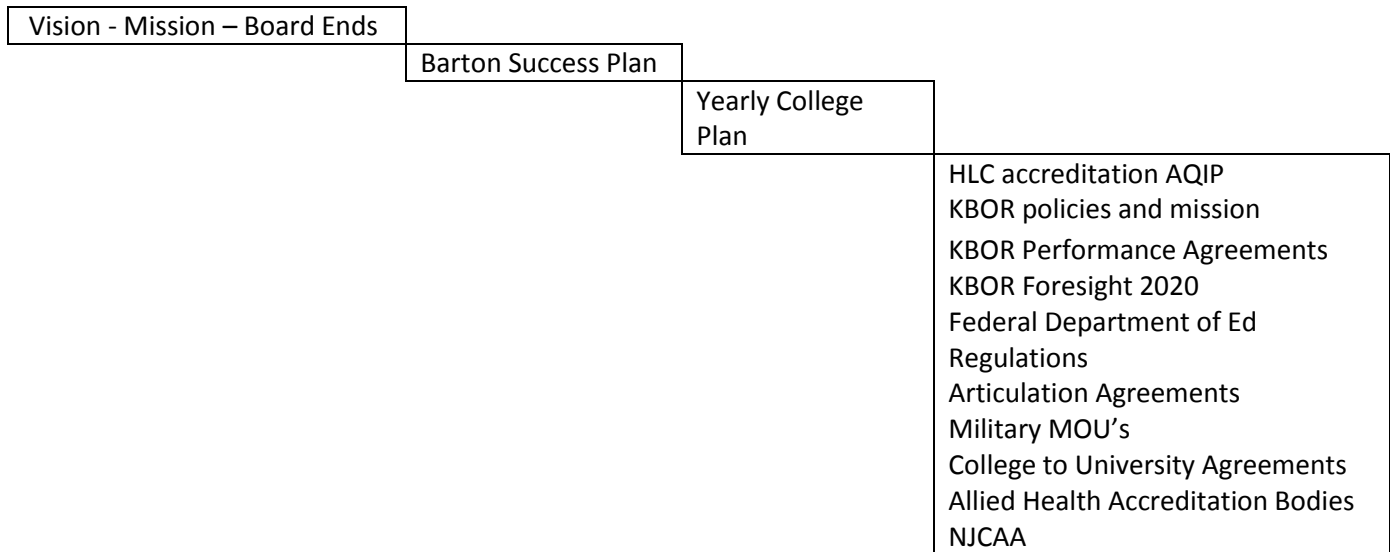
The Barton Success Plan contains four goals which will guide the college strategic planning efforts to ensure yearly goals are measurable, effective and when coupled with the Board ENDS monitoring reports KPI's will provide accountability to the public.

1. Maximize student learning and success.
2. Take full advantage of educational opportunities with service regions
3. Facilitate a culture of innovation, excellence and quality improvement
4. Ensure efficient management and stewardship of resources

Below is a visual on how planning flows from Board to individual employee.



To ensure efficiency through innovation and change the chart below shows external influences and requirements.



Planning at Barton is a constantly evolving and changing process. Each level of the college produces yearly college plans which support the ever changing landscape of the educational environment.

In the summer of 2013 Barton received notice of our transition from AQIP to Open Pathway. Below is the letter.

Dear President and Accreditation Liaison Officer,

Thank you for declaring your institution's choice of the Open Pathway. This e-mail confirms that your institution is now participating in the Open Pathway as its process for reaffirmation of accreditation.

Within four months of the date of this e-mail, your institution's Statement of Affiliation Status (SAS) will have been updated to reflect the activities related to the Open Pathway. The events and activities related to AQIP will

be replaced by those applicable to the Open Pathway. If your institution had any outstanding Commission-required interim reports or visits, the new SAS will include these. If there is any change related to monitoring, you will receive a separate letter explaining that change.

Because your institution has been participating in AQIP as its accrediting process, you may have considerable information in the AQIP Action Project Directory. Your institution will continue to have access to the Action Project Directory for the next 90 days in case you wish to retrieve any information. After this time period, your institution will lose access to the directory and the Commission will discontinue the designation of an AQIP Liaison.

We encourage you to download and review the [Open Pathway booklet](#). Also available on the Commission website is a document that explains the Quality Initiative proposal process and provides sample forms.

Institutions scheduled for reaffirmation of accreditation in 2015-16, 2016-2017, or 2017-2018 will receive a link to the proposal template with this email. Other institutions will receive the template prior to reaching Year 5 on the ten-year Open Pathway cycle. See the transition charts in the Open Pathway booklet to determine when this will occur for your institution.

If you have questions about any aspect of the transition to the Open Pathway, feel free to contact your Commission staff liaison or email pathways@hlcommission.org. We look forward to your smooth transition to the new Pathways model.

HIGHER LEARNING COMMISSION

The AQIP core group is working on the transition process and plan on releasing detailed information through the web site in the near future. The Board will also receive regular updates.

The KBOR Performance agreements were submitted on August 15th and the college is awaiting response/approval. These agreements will be interwoven with the yearly college plan.

The Board of Trustees are encouraged to visit the [Strategic plan web site](#) on a regular basis to review and check for progress.