



# WELCOME TO BARTON



2023-24 VIEWBOOK

GoBarton.com |      

**BARTON**  
COMMUNITY COLLEGE





# College is what you make of it

**32** STUDENT ACTIVITIES & ORGANIZATIONS



**HAVE FUN!**

**GET INVOLVED!**

**MEET NEW PEOPLE!**

**ENHANCE YOUR COLLEGE EXPERIENCE!**







# Join the fun!

# 50+ STUDENT ACTIVITIES THROUGHOUT THE YEAR!





# Striving for excellence

**58** NATIONAL  
CHAMPIONSHIPS



## Men's Sports

Baseball  
Basketball  
Bowling  
Cross Country  
Esports  
Golf  
Soccer  
Swimming  
Tennis  
Track  
Wrestling

## Women's Sports

Basketball  
Bowling  
Cross Country  
Esports  
Golf  
Soccer  
Softball  
Swimming  
Tennis  
Track  
Volleyball



[BartonSports.com](https://BartonSports.com)



# Supporting you when you need it

## ACADEMIC ADVISING

Help select classes

## CAMPUS SECURITY

24-hour security officers support a safe campus

## TRIO

Free services for eligible students

## TUTORING

FREE peer and professional tutoring

## COUNSELING SERVICES

Professional and personal counseling

## HEALTH SERVICES

FREE basic services

## CAREER CENTER

Student employment opportunities





# Programs of Study

## Transfer Programs

Transfer programs are designed to prepare you for transferring to a four-year college or university.

## Career Programs

Career programs offer students the option of one or two-year programs designed to provide knowledge and skills, which will prepare them for employment

## Location

Campus locations where program may be completed

BC = Barton County

FL = Ft. Leavenworth

FR = Ft. Riley

GV = Grandview Plaza

Outreach sites may be available

AA	Associate in Art - Liberal Studies major
AS	Associate in Science - Liberal Studies major
AGS	Associate in General Studies
AAS	Associate in Applied Studies
CERT1	Certificate Program: 16-29 hours
CERT2	Certificate Program: 30-44 hours
CERT3	Certificate Program: 45-59 hours
NDS	Non-degree Seeking and not eligible for federal aid
SAPP	Stand Alone Program
*	Emphasis of Study
+	May be eligible for federal aid under correlating degree program
++	Not eligible for federal aid

Online programs may require clinicals, field experiences, practicum, internships, etc. for some programs.

## AGRICULTURE

Agribusiness (AS - BC)  
 Agricultural Economics (AS - BC)  
 Agricultural Education (AS - BC)  
 Agriculture Business Mgmt (AAS - BC)  
 Agriculture Communications (AS - BC)  
 Agriculture Mechanics - Top Tech (CERT)  
 Agriculture Transfer Option (AS - BC)  
 Agronomy (AS - BC)  
 Animal Science (AS - BC)  
 Beef Cattle Production (CERT1, CERT2 - BC)  
 Commercial Driver License (SAPP - BC)  
 Crop Protection (CERT1, CERT2, AAS - BC)  
 Food Science (AS - BC)  
 Golf Course Management (AS - BC)  
 Horticulture/Turf Management (AS - BC)  
 Milling Science (AS - BC)  
 Park Mgmt & Conservation (AS - BC)  
 Scales Technician (CERT1 - BC)

## BUSINESS/ECONOMICS

Accounting (AS, ONLINE - BC)  
 Agribusiness (AS - BC)  
 Agricultural Economics (AS - BC)  
 Agriculture Business Mgmt (AAS - BC)  
 Bus Mgmt & Leadership (CERT1, AAS - ONLINE, BC, FR)  
 Business (AS - ONLINE, BC)  
 Business Admin Technology (AAS - ONLINE, BC)  
 Economics (AS - ONLINE, BC)  
 Finance (AS - ONLINE, BC)  
 Golf Course Management (AS - BC)  
 Management (AS - ONLINE, BC)  
 Marketing (AS - ONLINE, BC)  
 Park Mgmt & Conservation (AS - BC)  
 Public Administration (AS - BC)  
 Tech Accounting Specialist (AAS - ONLINE, BC)

## COMMUNICATION

Communications (AA - BC, FL, FR, Online)  
 Digital Communications & Content Strategy (AA - BC)  
 English (AA - ONLINE, BC)  
 Modern Languages (AA - BC)  
 Speech Communications (AA - BC)

## COMPUTER/INFO TECHNOLOGY

Computer Information Systems (AS - BC)  
 Computer Science (AS - BC)  
 Networking Security Specialist (CERT2, AAS - ONLINE)  
 Network Specialist (AAS - BC, Online)

## EARLY CHILDHOOD

Child Development (CERT1 - ONLINE, BC)  
 Early Childhood (AAS - ONLINE, BC)  
 Early Childhood Education (AS - ONLINE, BC)

## EDUCATION

Agricultural Education (AS - BC)  
 Art Education (AA - BC)  
 Child Development (Cert 1 - BC, Online)  
 Early Childhood Education (AS - ONLINE, BC)  
 Elementary Education (AS - BC)  
 Math Education (AS - ONLINE, BC)  
 Music Education (AA - BC)  
 Physical Education (AS - BC)  
 Secondary Education (AA, AS - ONLINE, BC)  
 Special Education (AS - BC)

**My journey with Barton has been long and enjoyable, filled with laughter and tears. I honestly wouldn't trade my experience here with any other in the world. At the end of my final year attending in the nursing program, I can say it was all well worth it.**

**- Jessica L.**

2022-23 Barton Student







**FINE AND PERFORMING ARTS**

Art (AA - BC)  
 Art Education (AA - BC)  
 Dance (AA - BC)  
 Dance Instruction and Management (AA - BC)  
 Digital Communications & Content Strategy (AA - BC)  
 Digital Graphics (AA - BC)  
 Digital Photography (AA - BC)  
 Music (AA - BC)  
 Music Accompaniment (AA - BC)  
 Music Education (AA - BC)  
 Theatre (AA - BC)

**GENERAL STUDIES**

General Studies (AGS - ONLINE, BC, FL, FR)

**HEALTH PROFESSIONS**

Adv Emergency Med Tech AEMT (SAPP++ - BC)  
 Certified Medication Aide (SAPP++ - BC)  
 Certified Nurse Aide (SAPP++ - BC)  
 Dietary Management (AS - ONLINE)  
 Dietary Manager (CERT1 - ONLINE)  
 Dietetics (AS - ONLINE)  
 Emergency Medical Responder (SAPP++ - BC)  
 EMS Instructor Coordinator (SAPP++ - BC)  
 EMT (SAPP++ - ONLINE, BC, GV)  
 Medical Admin Technology (AAS - ONLINE)  
 Medical Assistant (CERT2, AAS - BC)  
 Medical Coding (CERT2 - ONLINE)  
 Medical Lab Technician (AAS, ONLINE - BC)  
 Nursing - PN (CERT3 - BC)  
 Nutrition and Health (AS - ONLINE, BC)  
 Paramedic (CERT3, AAS - BC, GV)  
 Pharmacy (AS - ONLINE, BC)  
 Pharmacy Technician (CERT1 - ONLINE)  
 Phlebotomy Training (SAPP+ - BC)  
 Physical Therapy (AS - ONLINE, BC)  
 Practical Nursing - PN (CERT 3 - BC)  
 Registered Nursing (AAS - BC)

**HEALTH, PHYSICAL EDUCATION, RECREATION**

Athletic Training (AS - BC)  
 Exercise Science (AS - BC)  
 Physical Education (AS - BC)  
 Sports Management (AS - BC)

**HUMANITIES AND SOCIAL SCIENCES**

Anthropology Cultural Studies (AA - ONLINE, BC)  
 History (AA - ONLINE, BC)  
 Philosophy (AA - BC)  
 Political Science (AA - ONLINE, BC)  
 Psychology (AS - ONLINE, BC)  
 Religion (AA - BC)  
 Sociology (AA - ONLINE, BC)

**INDUSTRIAL/ENERGY TECHNOLOGY**

Carpentry (CERT1 - BC)  
 Natural Gas Trans/Distrib Tech (CERT2, AAS - BC)  
 Plumbing (CERT1 - BC)  
 Scales Technician (CERT1 - BC)  
 Welding Technology (CERT1, CERT2 AAS - BC)

**LIBERAL STUDIES**

Liberal Studies (AA, AS - ONLINE, BC, FL, FR)

**MILITARY STUDIES/LEADERSHIP**

Military Leadership (CERT2++ - GV)  
 Military Logistics (CERT2++ - GV)  
 Military Dangerous Matr Handling (CERT2++ - GV)  
 Applied Technologies (AAS++)

**PRE-PROFESSIONAL**

Architectural Engineering (AS - BC)  
 Architecture (AS - BC)  
 Engineering Tech (AS - BC)  
 Health Information Mgmt (AS - ONLINE, BC)  
 Law (AA - ONLINE, BC)  
 Mortuary Science (AS - BC)  
 Social Work (AA - ONLINE, BC)  
 Veterinary Medicine (AS - ONLINE, BC)

**PRE-PROFESSIONAL HEALTHCARE**

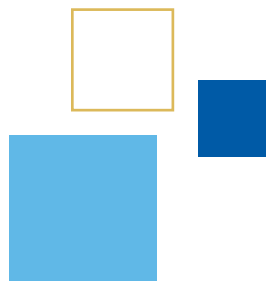
Chiropractic (AS - ONLINE, BC)  
 Dental Hygiene (AS - BC)  
 Dentistry (AS - ONLINE, BC)  
 Medicine (AS - ONLINE, BC)  
 Nursing - Transfer (AS - BC)  
 Occupational Therapy (AS - BC)  
 Optometry (AS - BC)  
 Pharmacy (AS - ONLINE, BC)  
 Physical Therapy (AS - ONLINE, BC)  
 Physical Therapy Asst (AS - BC)  
 Physicians Asst (AS - ONLINE, BC)  
 Radiology Tech (AS - ONLINE, BC)  
 Respiratory Therapy (AS - BC)

**PUBLIC SAFETY AND SECURITY**

Adv Emergency Med Tech AEMT (SAPP++ - BC)  
 Criminal Justice (AA, CERT3, AAS - BC)  
 Emerg Mgmt/Homeland Security (CERT2, AAS - ONLINE, GV)  
 EMT (SAPP+ - GV)  
 Hazardous Materials Mgmt (CERT2, AAS - ONLINE, GV)  
 Occupational Safety & Health (CERT1, AAS, SAPP: not available online - ONLINE, GV)  
 Paramedic (CERT3, AAS - BC, GV)

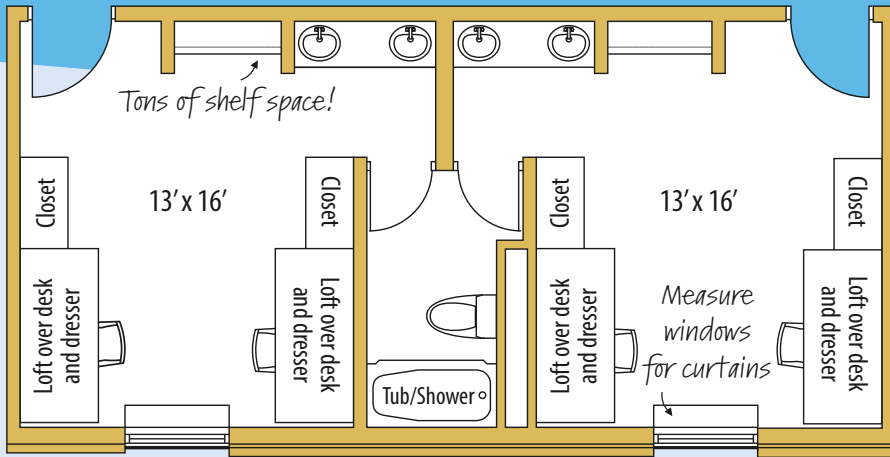
**SCIENCE AND MATH**

Biology (AS - ONLINE, BC)  
 Chemistry (AS - ONLINE, BC)  
 Geology (AS - BC)  
 Mathematics (AS - ONLINE, BC)  
 Physical Sciences (AS - ONLINE, BC)  
 Physics (AS - BC)  
 STEM (AS - BC)  
 STEM Education (AS - BC)  
 Wildlife Science (AS - ONLINE, BC)



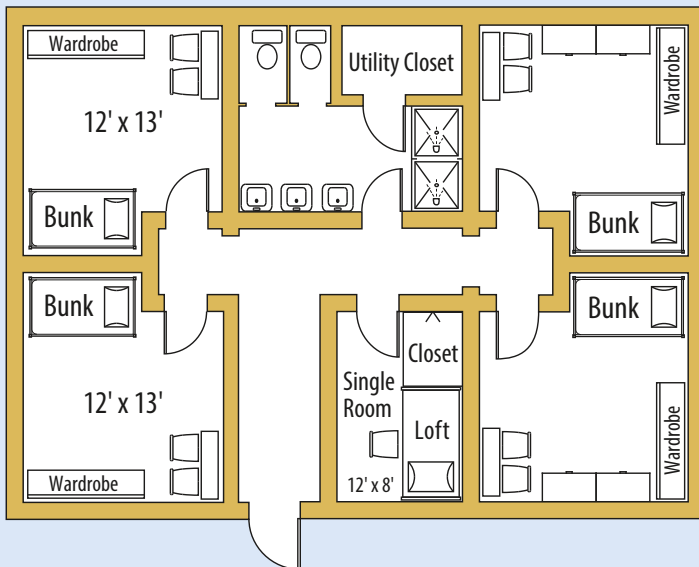


# Dorm life rocks!



## COTTONWOOD HALL

Twin rooms, double occupancy - Shared bath  
Handicap accessible rooms available



## BISON HALLS

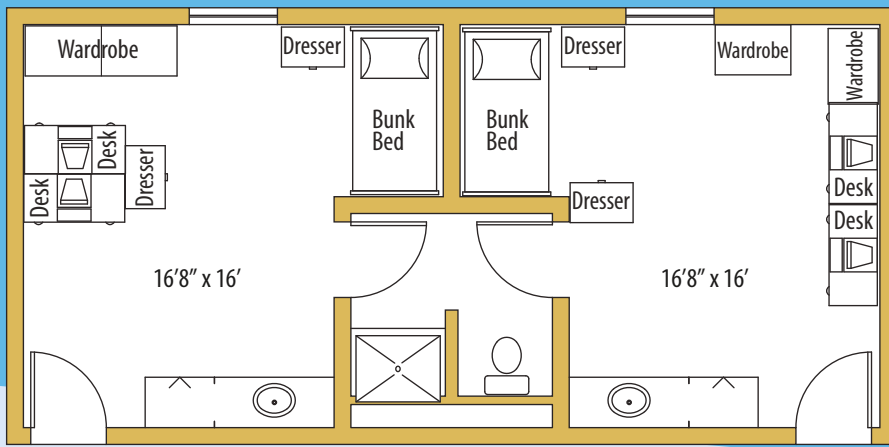
There will be some variation between units  
"Community Style" (9 people per unit)



[housing.bartonccc.edu](http://housing.bartonccc.edu)

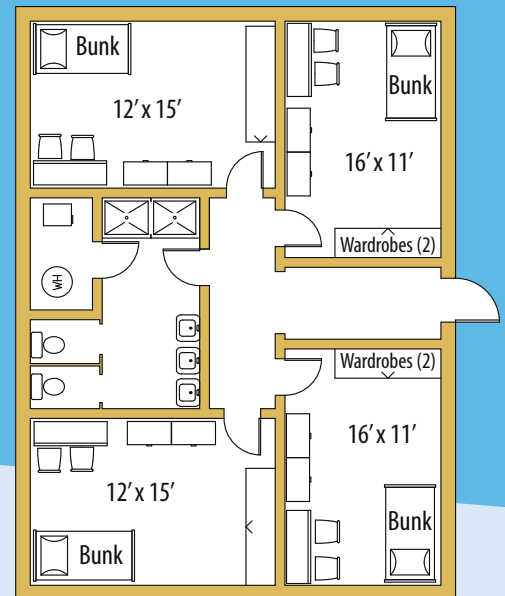






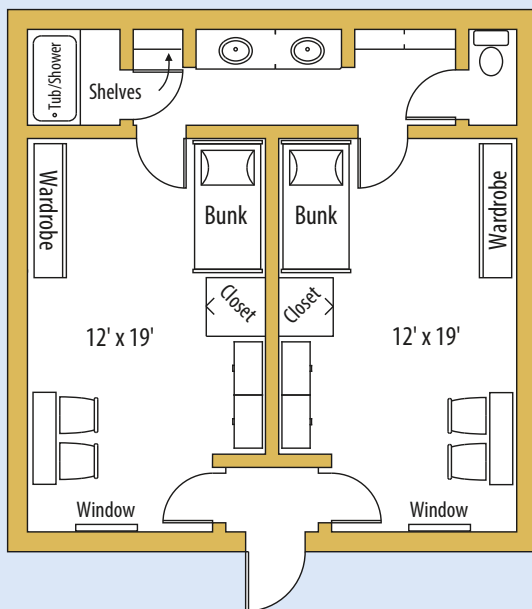
## BLUESTEM HALL

Twin rooms, double occupancy - Shared bath  
Handicap accessible rooms available



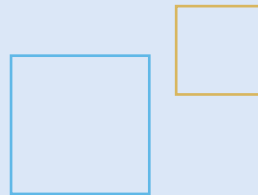
## MEADOWLARK HALLS

There will be some variation  
between units  
"Community Style"  
(6-8 people per unit)



## SUNFLOWER HALLS

Twin rooms, double occupancy  
Shared bath



### Features

- Wireless internet campus-wide including student housing
- Three FREE Laundromats
- Meal plan includes 19 meals per week
- Housing for 442 students
- FREE cable and newly released movies available for streaming monthly
- FREE student housing parking
- Vending machines
- Room furniture includes a desk, wardrobe, chest of drawers and extra long twin bed for each resident
- Community meeting room with flat screen television
- ADA compliant rooms
- Community kitchen facilities available with stove, microwave, refrigerator and ice machine
- Designated storm shelter areas
- 24-hour security and camera surveillance
- Eco-friendly drinking water stations





# Learning wherever you are

## FALL 2023

Session 1	8 weeks	Aug 21 - Oct 15
Session 2	16 weeks	Aug 21 - Dec 10
Session 3	6 weeks	Sept 4 - Oct 15
Session 4	8 weeks	Oct 16 - Dec 10
Session 5	6 weeks	Oct 23 - Dec 3
Intersession	4 weeks	Dec 11 - Jan 7

## SPRING 2024

Session 1	8 weeks	Jan 22 - Mar 17
Session 2	16 weeks	Jan 22 - May 12
Session 3	6 weeks	Feb 5 - Mar 17
Session 4	8 weeks	Mar 18 - May 12
Session 5	6 weeks	Apr 1 - May 12
Intersession	4 weeks	Apr 15 - May 12

## SUMMER 2024

Session 1	6 weeks	May 20 - Jun 30
Session 2	8 weeks	Jun 3 - Jul 28
Session 3	8 weeks	Jun 17 - Aug 11
Session 4	6 weeks	Jul 1 - Aug 11
Extended Session	12 weeks	May 20 - Aug 11

The access to online classes is great. There is never any trouble getting the course I need and someone is always available to help answer questions!

– Jillian M.  
2022-23 Barton Student

**BARTON**  
ONLINE



[online.bartonccc.edu](https://online.bartonccc.edu)





# Early College Opportunities

## Tuition Free Opportunities

- Kansas sophomores, juniors, and seniors can take career technical education classes on the Excel in CTE (SB155) list at no cost except textbook and materials fees, if applicable.
- Qualifying coursework includes classes in exciting fields like: accounting, agriculture, carpentry, early childhood education, emergency medical services, medical terminology, networking, plumbing, programming, and welding.
- Online and campus offerings available!
- High school students may qualify for vocal and instrumental scholarships and apply for other Barton scholarships.

## \$50/credit hour

- Kansas high school students pay only \$50 per credit hour for classes on the Barton County Campus, in-person at area high schools, and via Partnered Online.
- Partnered Online classes are online classes offered through a partnership between Barton and various high schools. Students can work on these classes during the high school day and may earn dual credit for them with their school's permission.
- Online and campus offerings available!

## \$75/credit hour online scholarship

- Kansas high school students pay only \$75 per credit hour for Barton Online classes (with applicable scholarship)
- General education and career technical classes are available.
- 4, 6, 8, and 16-week sessions to fit your schedule.

High school is an important milestone, and you should take the time to enjoy it, but at the same time, you can get an early start on college by adding one or two classes during the year to see if you like it.

– Elle H.

2023 Great Bend High School and Barton Community College graduate



**BARTON**  
EARLY COLLEGE  
OPPORTUNITIES

QUESTIONS: Karly Little | Director of Early College Opportunities • [littlek@bartonccc.edu](mailto:littlek@bartonccc.edu) • (620) 792-9294  
[highschool.bartonccc.edu](http://highschool.bartonccc.edu)

CHECK OUT THE  
STUDENT GUIDE



VIEW HIGH SCHOOL  
PARTNERSHIPS



FORT RILEY  
[fr.bartonccc.edu](http://fr.bartonccc.edu)

FORT LEAVENWORTH  
[fl.bartonccc.edu](http://fl.bartonccc.edu)

GRANDVIEW PLAZA  
[hmesi.bartonccc.edu](http://hmesi.bartonccc.edu)

**BARTON**  
ONLINE





# We'll be here for you!

Don't forget to register for Senior Day November 8!



**REGISTRATION ENDS NOVEMBER 1**  
**CHECK [SENIORDAY.BARTONCCC.EDU](http://SENIORDAY.BARTONCCC.EDU) FOR DETAILS!**

# SENIOR DAY



- INFO SESSIONS WITH ADMISSIONS
- CAMPUS AND HOUSING TOURS
- FREE LUNCH
- MEET WITH ADVISORS
- MEET WITH ATHLETIC COACHES AND  
ACTIVITY SPONSORS
- SCHOLARSHIP DRAWINGS





# Join us!

Don't forget to register for Junior Day  
February 14!

**REGISTRATION ENDS FEBRUARY 1**  
**CHECK JUNIORDAY.BARTONCCC.EDU FOR DETAILS!**



# JUNIOR DAY



**BUILD-A-COUGAR**  
**EXPLORE MULTIPLE MAJORS**  
**CAMPUS TOUR**  
**FREE LUNCH**  
**SCHOLARSHIP DRAWINGS**  
**MEET WITH ATHLETIC COACHES AND**  
**ACTIVITY SPONSORS**  
*And much more!*





# Make your dreams happen

## Campus Employment

Get an on-campus job that aligns with your career and education goals! Positions include content creator, office worker, bookstore employee, art gallery attendant, lifeguard, maintenance worker, computer lab monitor and more!

## Activity and Departmental Scholarships

Get a scholarship for your skills or hobbies! Areas offering Activity and Departmental awards include: Admissions, Agriculture, Art, Band, Business, Cheer, Criminal Justice, Drama, Early Childhood, Engineering, EMS, HALO, Medical Assistant, MLT, Music, Natural Gas, Nursing, Networking and Student Senate.

## Foundation Scholarships

Thanks to the generosity of many donors, endowments and annually funded scholarships with a wide variety of criteria are available to assist students.

Scholarship application priority deadline is March 15 prior to the academic year. The application can be found at [bartonccfoundation.org](http://bartonccfoundation.org).

## WHAT'S NEW!

### Scholarship Universe

After applying for admissions to Barton, students will have access to Scholarship Universe in their MyBarton portal. Scholarship Universe houses all of our internal Barton Scholarships and external privately funded scholarships in one location. All applications are electronic and safe for students to apply to.

### Kansas Promise Scholarship

Select Barton Community College career and technical education programs will be available at no cost to eligible students beginning in the Fall of 2021, thanks to a new scholarship program designed to increase Kansans' access to community colleges and technical schools. Please visit [bartonccc.edu/promiseact](http://bartonccc.edu/promiseact) for more information about this scholarship and if the program you are interested in is eligible.



Barton paid out more than \$10 million in financial aid last year





2023-2024

# Cost Information

Fill out the free application for Federal Student Aid at [studentaid.gov](http://studentaid.gov)

- (Barton's Code: 004608)
- Payment options also available

### COST PER CREDIT HOUR

In-District .....	\$113
In-State .....	\$122
Out-of-State.....	\$151
International .....	\$214

\*Subject to change by the State of Kansas

### BARTON ONLINE

\$155 per semester credit hour

### ANNUAL COST ESTIMATES: IN-STATE

TOTAL COST** .....	\$11,005
--------------------	----------

### ANNUAL COST ESTIMATES: OUT-OF-STATE

TOTAL COST** .....	\$11,875
--------------------	----------

### HIGH SCHOOL (KS RESIDENTS ONLY)

- College Advantage, Partnered Online and classes taught on the Barton County campus. .... \$50/cr. hour
- Barton Online (with applicable scholarship). .... \$75/cr. hour

\*The Barton Board of Trustees has the right to change tuition without notice.  
 \*\*Cost is based on 15 credit hours per semester x 2 semesters, estimated books cost and housing. Estimates do not include other personal costs or costs associated with various classes nor cost of online courses.



## Barton Bound Scholarships

For more information and details, visit [financialaid.bartonccc.edu](http://financialaid.bartonccc.edu).



SCHOLARSHIP	SCHOLARSHIP AMOUNT	KANSAS HS GPA (7th semester)
Excellence Scholarship	Tuition & Books	3.5 and above
Honor Scholarship	\$1,000	3.0 - 3.49
Achievement Scholarship	\$700	2.5 - 2.99





# We'd love to meet you!

**FREE!** ↓

**PARKING!** 🚗

**LUNCH!** 🍷🍔

**SMILES!** 😊

**T-SHIRT!** 👕

*Application for admission!* 📄

The community is very welcoming.  
I felt as if I was already a part of  
the school when I came for my  
campus visit.

– Cooper H.  
2022-23 Barton Student

## SCHEDULE A TOUR!

**Monday - Friday**

8:30 a.m. - 3 p.m.

[bartonccc.edu/admission](http://bartonccc.edu/admission)

(800) 722-6842

*Tour times fill quickly, so don't delay! Give us at least a week's notice, and we'll get your visit scheduled to fit YOUR needs!*



[visit.bartonccc.edu](http://visit.bartonccc.edu)



# Are you ready to take the next step?

Look what you can do in ONE day!

- Meet with an academic advisor
- Plan and enroll for classes
- Meet with a Financial Aid Advisor
- Make payment arrangements with the Business Office
- Meet with Student Support Services
- Take assessment test (if needed)

## Enrollment Days

Tuesday, April 16	1 p.m. & 6 p.m.
Wednesday, April 17	9 a.m. & 1 p.m.
Tuesday, April 23	9 a.m. & 1 p.m.
Wednesday, April 24	1 p.m. & 6 p.m.
Wednesday, May 1	1 p.m.
Wednesday, May 15	1 p.m.
Wednesday, May 22	1 p.m.
Wednesday, June 5	1 p.m.
Wednesday, June 12	1 p.m.
Wednesday, June 19	1 p.m.
Wednesday, July 10	1 p.m.
Wednesday, July 17	1 p.m.
Wednesday, July 24	1 p.m.









# Directory information

## BARTON COUNTY CAMPUS

**Local:** (620) 792-2701  
**Toll-Free:** (800) 748-7594  
**Address:** 245 NE 30 RD  
Great Bend, KS 67530  
bartonccc.edu

## FORT RILEY CAMPUS

**Local:** (785) 784-6606  
**Toll-Free:** (877) 620-6606  
**Address:** Bldg. 211 Custer Ave., P.O. Box 2463  
Fort Riley, KS 66442  
fr.bartonccc.edu

## FORT LEAVENWORTH CAMPUS

**Local:** (913) 684-9384  
**Toll-Free:** (855) 509-3374  
**Address:** 120 Dickman Ave.  
Fort Leavenworth, KS 66027  
fl.bartonccc.edu

## GRANDVIEW PLAZA OUTREACH SITE

**Local:** (785) 238-8550  
**Toll-Free:** (877) 771-0255  
**Address:** 100 Continental Drive  
Grandview Plaza, KS 66441  
hmedi.bartonccc.edu

## ONLINE LEARNING OPPORTUNITIES



online.bartonccc.edu  
(866) 455-2828

📞 All numbers use (620) area code unless noted otherwise

**Admissions**  
(800) 722-6842 or 792-9286

**Advisement Center**  
792-9225

**Athletics**  
792-9377

**Bookstore**  
792-9229

**Business Office**  
792-9321

**Business, Tech & Community Ed**  
(866) 813-2460 or 792-9358

**Campus Safety**  
792-9217

**Career Center**  
792-9349

**Enrollment Services**  
792-9252

**Financial Aid**  
792-9270

**Human Resources**  
792-9237

**Learning Resources**  
792-9365

**Nursing & Healthcare Education**  
(800) 732-6842 or 792-9357

**Communications**  
792-9307

**Shafer Gallery**  
792-9342

**Student Housing**  
792-9281

**Student Life/Student Activities**  
792-9271

**Student Services**  
792-9282

**Student Support Services**  
792-9240

**Transfer/Academic Programs**  
792-9391

**Veteran's Affairs**  
792-9363

**Workforce Training and Community Ed**  
(866) 813-2465 or 792-9324

**Workforce Training & Economic Dev**  
(866) 813-2462 or 792-9255

**Center for Adult Education**  
786-7560

**Educational Opportunity Center**  
793-8164





# Cougar Checklist

- 1 CAMPUS TOUR** 🐾 A great way to see if Barton is the place for you!
- 2 ADMISSIONS APPLICATION** 🐾 [apply.bartonccc.edu](https://apply.bartonccc.edu)
- 3 SCHOLARSHIP APPLICATION** 🐾 [mybarton.bartonccc.edu](https://mybarton.bartonccc.edu)
- 4 SUBMIT PLACEMENT TEST SCORES** 🐾 Haven't taken any assessment tests or the ACT? No problem! Just give us a call and we'll get you taken care of.
- 5 SUBMIT COMPLETED TRANSCRIPT** 🐾 Completed high school transcript must be mailed directly to Barton Community College to be official. Unofficial transcripts can be used for advising and obtaining academic information (GPA, ACT Scores, etc.)
- 6 HOUSING APPLICATION** 🐾 Submit application and deposit early to get your first choice! Application available online.
- 7 FINANCIAL AID** 🐾 Cost should not be a reason to rule out college! Visit [studentaid.gov](https://studentaid.gov) for federal assistance or call us for even more options!

## WANT TO GET STARTED?

For more information, call the Admissions Office at (800) 722-6842 or (620) 792-9286



Non-Discrimination Notice: Barton Community College adheres to all federal, state, and local civil rights laws prohibiting discrimination in employment and education. Barton Community College does not discriminate in its admissions practices [except as permitted by law], in its employment practices, or in its educational programs or activities on the basis of sex/gender, race, color, national origin, disability or any other protected classes enumerated in Policy 1132. Any person having inquiries concerning Barton County Community College's non-discrimination compliance policy, including the application of Equal Opportunity Employment, Titles IV, VI, VII, IX, Section 504 and the implementing regulations, is directed to contact Barton's Title IX Coordinator, Cheryl Brown, Title IX Coordinator, 245 NE 30 Road, Great Bend, KS 67530, (620) 786-7441, [titleix@bartonccc.edu](mailto:titleix@bartonccc.edu) or [brownc@bartonccc.edu](mailto:brownc@bartonccc.edu). Visit [equal.bartonccc.edu](https://equal.bartonccc.edu) for more information.