



HLC Accreditation Evidence

Title: Enrollment Report

Office of Origin: President - Institutional Effectiveness

Barton Planning | KPI - Enrollment Data

The [Knocking at the College Door](#) report on page 3 upper left column states " In 2013 the Midwest generated 22 percent of the nation's high school graduates (about 762,000). that share is projected to decrease to 19 percent by 2030, meaning 93,000 fewer high school graduates by that time (a decline of 12 percentage points compared to 2013)."

In the same report on page 24 the Midwest will experience a ~ 75,000 drop in the white population.

Barton's [Out Of State Students](#) are also declining.

Nation Wide Community College Enrollments have been on a downward trend as the chart (National Student Clearinghouse) shows. Complete reports from [National Student Clearing House](#) and [American Association of Community Colleges](#)

Figure 1: Percent Change from Previous Year, Enrollment by Sector (Title IV, Degree-Granting Institutions)

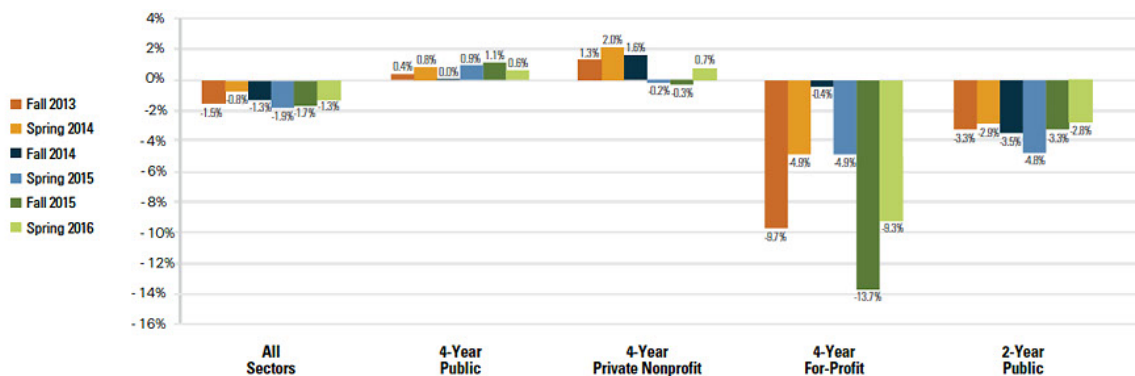
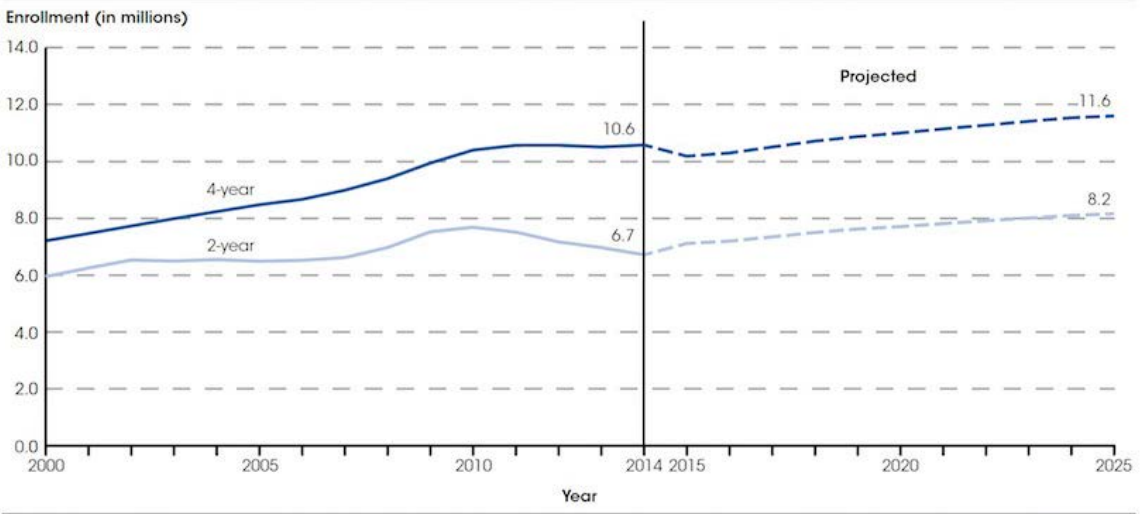
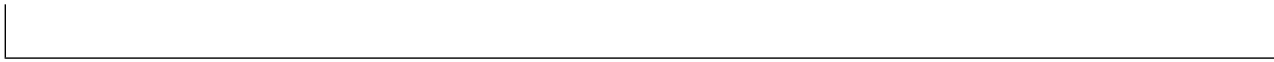


Figure 1 shows the 12-month percentage change (fall-to-fall and spring-to-spring) for each term over the last three years.


Figure 5. Actual and projected undergraduate enrollment in degree-granting postsecondary institutions, by level of institution: Fall 2000–2025



NOTE: Data include unclassified undergraduate students. Degree-granting institutions grant associate's or higher degrees and participate in Title IV federal financial aid programs. Projections are based on data through 2014. Some data have been revised from previously published figures.
SOURCE: U.S. Department of Education, National Center for Education Statistics, Integrated Postsecondary Education Data System (IPEDS), IPEDS Spring 2001 through Spring 2015, Fall Enrollment component; and Enrollment in Degree-Granting Institutions Projection Model, 1980 through 2025. See *Digest of Education Statistics 2015*, table 303.70.



Below is data taken from the Kansas Board of Regents web site giving an overview of Head Count at Kansas Community Colleges.

To enlarge the charts below hover your mouse over the chart and click on 



BARTON WEBSITES: Faculty

[Staff Center](#)

[BARTonline](#)

[Ft. Leavenworth](#)

[Ft. Riley](#)

[Grandview Plaza](#)

[Barton OSHA](#)

[Foundation](#)

RESOURCES

[About Barton](#)
[Policies and Procedures](#)
[Employment Opportunities](#)
[Emergency Operations Plan](#)
[Notice of Non-Discrimination](#)



CONTACT

Barton Community College
245 NE 30 Road
Great Bend, KS 67530
(800) 748-7894 • (620) 792-2701
[Email Barton](#)